

LEA Name : Methacton SD
Address : 1001 Kriebel Mill Rd
Eagleville , PA 19403

County : Montgomery
AUN Number : 123465303
LEA Type : SD

Annual Financial Report Accuracy Certification Statement

For Fiscal Year Ending

6/30/2020

Pennsylvania Department of Education

&

Office of Comptroller Operations

PDE-2056: Intermediate Unit

PDE-2057: School District, AVTS/CTC, Charter School,
and Special Program Jointure

CERTIFICATION: By signing this page I agree that the electronic data submitted is a complete and accurate statement of the financial operations and status of the local education agency for the fiscal year. It has been prepared in accordance with generally accepted accounting principles and established Commonwealth of PA reporting guidelines.

Chief School Administrator Signature

Date

Board Secretary Signature

Date

Danielle Penza

Contact Person

dpenza@methacton.org

Contact Person E-mail Address

(610)489-5000

Ext :15005

Contact Person Telephone Number

(610)489-5019

Contact Person Fax Number

Audit Certification
Annual Financial Report:
For Fiscal Year Ending **6/30/2020**
(Pursuant to PA School Code Section 218(b))

LEA Name : Methacton SD
AUN Number : 123465303
County : Montgomery

Audit Certification Due: 12/31/2020

This certification is applicable to the Annual Financial Report data submitted through the Consolidated Financial Reporting System (CFRS).

CERTIFICATION: By signing this page I agree that the financial statements of the school have been properly audited as noted above pursuant to Article XXIV, and in the auditor's professional opinion, the Annual Financial Report (PDE-2057) submitted through CFRS is materially consistent with the audited financial statements.

Chief School Administrator

Signature

Date

Board Secretary

Signature

Date

Danielle Penza

Contact Person

dpenza@methacton.org

Contact Person E-mail Address

(610)489-5000

Ext :15005

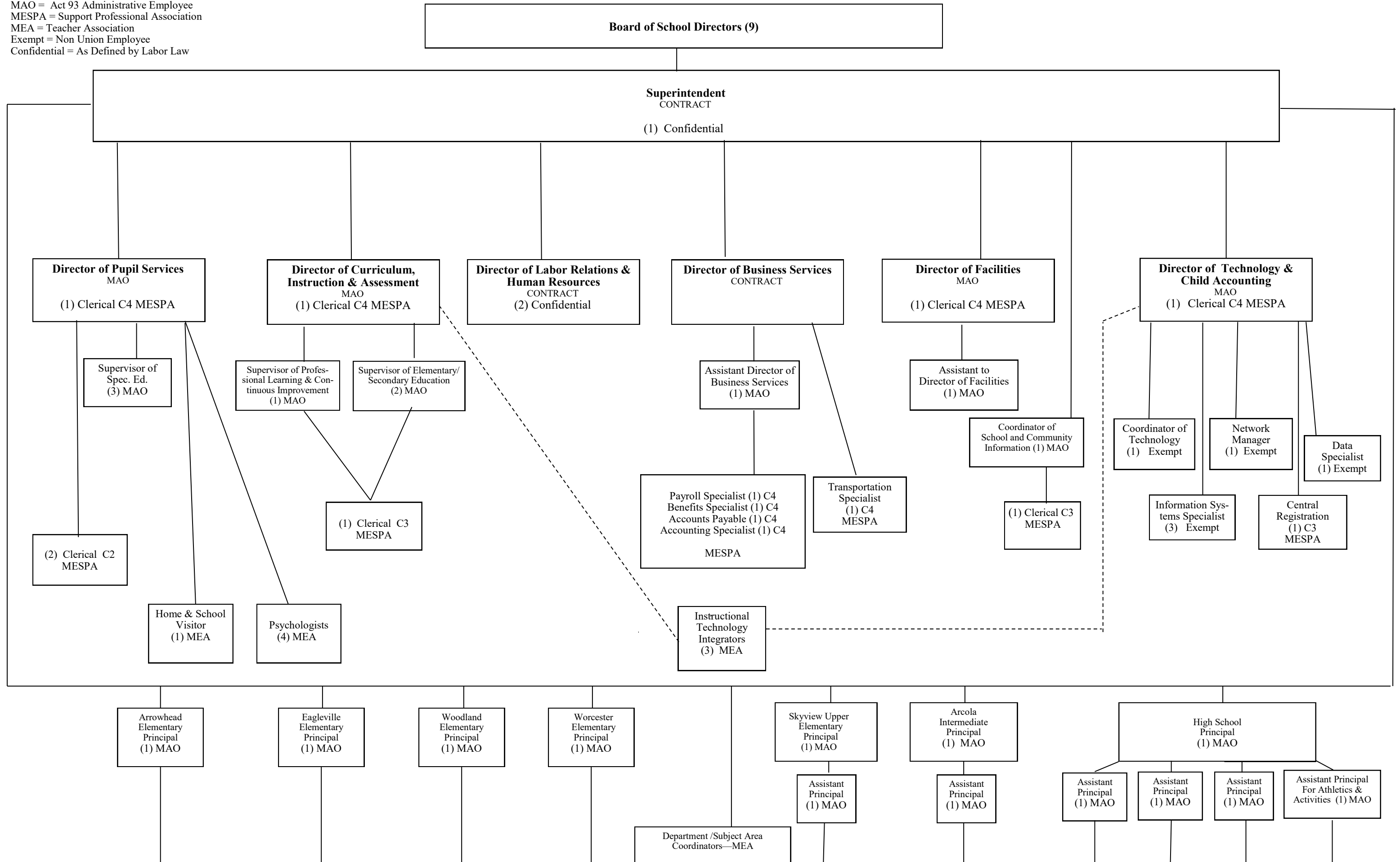
Contact Person Telephone Number

(610)489-5019

Contact Person Fax Number

CONTRACT = Individual Employment Contract
 MAO = Act 93 Administrative Employee
 MESPA = Support Professional Association
 MEA = Teacher Association
 Exempt = Non Union Employee
 Confidential = As Defined by Labor Law

As of 11/26/2019



METHACTON SCHOOL DISTRICT
Administrative Capitalization Procedures
Schedule A

Class of Asset	Useful Life	Dollar Threshold For Each Asset	Dollar Threshold By Group
<u>Depreciable Capital Assets</u>			
Depreciable capital assets are non-consumable material purchases with a life expectancy of greater than one (1) year. Depreciate individual large items or groups of like assets. The actual useful life will be based upon the specific utilization. Items will be grouped by year of acquisition.			
1. Vehicles			
School buses - 66/84 passenger	10 to 15 years	over \$5,000	not applicable
School buses - 11/48 passenger	5 to 10 years	over \$5,000	not applicable
School vehicles – under 10 passenger	3 to 8 years	over \$5,000	not applicable
Other licensed vehicles	7 to 10 years	over \$5,000	not applicable
2. Buildings	40 years	over \$25,000	not applicable
Where possible, the structure shell should be segregated from the mechanical, roofing, electrical, plumbing, cafeteria and build-ins. (These components may be replaced several times during the life of the structure shell. Segregation of these costs will ease accountability for replacing or improving the component parts and avoid pyramiding the asset valuation.)			
3. Land Improvements	20 years	over \$25,000	not applicable
Original or additional installations; land attachments with limited lives; fencing; retaining walls; irrigation systems; athletic courts, fields and tracks; private use sewer facilities and water lines; area lighting; drives and parking lots, sidewalks, curbs and gutters that are incidental to a school's property or access to the property.			
4. Building Improvements	20 to 40 years	over \$25,000	not applicable
Grouped by year of improvement; must have a significant impact and be twenty-five percent (25%) or more of the cost of the original component. For example, partitioning, lighting, flooring and routine maintenance will generally be expensed.			
5. Portable Classrooms	-	over \$10,000	not applicable
6. Leasehold Improvements	-	over \$25,000	not applicable
7. Collections/Works of Art/Historical Treasures	-	over \$10,000	not applicable
8. Technology Group	5 years	over \$2,500 each	over \$10,000
(pc's, printers, drives, network hardware); replacement of component parts such as a keyboard/mouse/cable are not to be considered equipment.			
9. Technology Group (administrative software)	5 years	over \$2,500 each	over \$10,000
10. Audio Visual Equipment	5 years	over \$2,500 each	over \$10,000
11. Athletic Equipment (examples: wrestling mats, weight machines)	5 years	over \$2,500 each	over \$10,000

Class of Asset	Useful Life	Dollar Threshold For Each Asset	Dollar Threshold By Group
12. Musical Instruments	5 years	over \$2,500 each	over \$10,000
13. Library Books	10 years	over \$2,500 each	over \$10,000
14. Maintenance and Grounds Equipment	10 years	over \$2,500 each	over \$10,000
15. Furniture and Fixtures	10 years	over \$2,500 each	over \$10,000

Non-Depreciable Capital Assets

1. Land	not applicable	over \$500	not applicable
2. Land Improvements (costs incurred to ready land for its intended use that does not lose its value; i.e. excavation, fill, grading, landscaping)	not applicable	over \$1,000	not applicable
3. Construction-in-Progress	not applicable	over \$25,000	not applicable
4. Easements	not applicable	over \$1,000	over \$5,000
5. Rights of Way	not applicable	over \$1,000	over \$5,000

Infrastructure Assets

Infrastructure assets are long-lived capital assets that normally can be preserved for a significantly greater number of years than most capital assets. Infrastructure assets are normally stationary in nature such as roads and bridges. Buildings, except those that are an ancillary part of a network of infrastructure assets, should not be considered infrastructure assets. Other examples of non-infrastructure assets that are incidental to a school's property include: fencing, retaining walls, irrigation systems, athletic courts, fields and tracks, private use sewer facilities and water lines, area lighting, drives, parking lots, sidewalks, curbs and gutters.

The determination of major infrastructure assets should be at the network or subsystem level and should be based on these criteria:

1. The cost or estimated cost of the subsystem is expected to be at least five percent (5%) of the total cost of all general capital assets reported in the first fiscal year ending after June 15, 1999.
2. The cost or estimated cost of the network is expected to be at least ten percent (10%) of the total cost of all general capital assets reported in the first fiscal year ending after June 15, 1999.
3. Reporting of non-major networks is encouraged but not required.

Salvage Value

In setting up the inventory records of capitalized assets, management should consider, with the local auditor, the use of salvage value on those capitalized assets that have a resale value at the end of their useful life.

LEA : 123465303 Methacton SD

Printed 10/14/2020 2:02:19 PM

Val Number	Description	Justification
41140	<p>Expenditure Detail - There is an entry in account 5150-990 which should only include bond discounts. Please verify that only bond discounts are being reported within this code.</p> <p>Expenditure 5150-990, Fund 39: \$108,182.50</p>	Bond Discounts.
42420	<p>Expenditure Detail: Total current year 2700-513 expenditure varies from prior year by 10%. Correct the data or enter a justification.</p> <p>2700-513, AFR Exp Detail: \$5,291,939.19 2700-513, PY AFR Amount: \$6,363,416.70</p>	Due to COVID-19 and schools being closed, an amendment with our transportation provider was approved for the following: pay 85% of the contract from 3/12-3/27/20 and 50% of the contract from 3/30-6/12/20.
50440	<p>SESS - 2260 Instruction and Curriculum Development Services: SESS Schedule amounts for Special Education vary from prior year by 40% or more. Correct the data or enter a justification.</p> <p>SESS Schedule 2260: \$51,915.96 Prior Year SESS Schedule 2260: \$28,021.45</p>	Two positions were added. Supervisor of Elementary Curriculum, Instruction and Assessment and Supervisor of Secondary Curriculum, Instruction and Assessment.
50460	<p>SESS - 2420 Medical Services: SESS Schedule amounts for Special Education vary from prior year by 40% or more. Correct the data or enter a justification.</p> <p>SESS Schedule 2420: \$523,651.60 Prior Year SESS Schedule 2420: \$348,041.76</p>	\$76,080.57 of invoices for 18-19 were not received until the middle of September, after our audit was complete, and were paid out of 19-20. If you add \$76,080.57 to prior year and subtract \$76,080.57 from current year. The variance is 5.5%.

LEA : 123465303 Methacton SD

Printed 10/14/2020 1:59:30 PM

Amounts Expressed in Whole Dollars		<u>General Fund</u> <u>(10)</u>	<u>Student Sponsored</u> <u>Activity Fund</u> <u>(21)</u>	<u>Public Purpose Trust</u> <u>(27)</u>	<u>Other Compt Approved</u> <u>(28)</u>	<u>Athletic / Activity</u> <u>(29)</u>
Assets And Deferred Outflows Of Resources						
Assets						
0100	Cash and Cash Equivalents	27,205,864				
0110	Investments					
0120	Taxes Receivable	1,984,774				
0130	Due From Other Funds	375,087				
0141	Due From Other Governments					
0142	State Revenue Receivable	2,826,547				
0143	Federal Revenue Receivable	422,775				
0145	Other Intergovernmental Revenue Receivable					
0146	Due from Primary Government					
0147	Due from Component Unit					
0150	Other Receivables	35,603				
0170	Inventories					
0180	Prepaid Expenses (Expenditures)	1,670,562				
0190	Other Current Assets					
Total Assets		\$34,521,212				
0910	Deferred Outflows of Resources					
Total Assets And Deferred Outflows Of Resources		\$34,521,212				

Amounts Expressed in Whole Dollars		<u>Capital Reserve (690.</u> <u>1850)</u> <u>(31)</u>	<u>Capital Reserve (1431)</u> <u>(32)</u>	<u>Other Capital Projects</u> <u>Fund</u> <u>(39)</u>	<u>Debt Service</u> <u>(40)</u>	<u>Permanent</u> <u>(90)</u>
Assets And Deferred Outflows Of Resources						
Assets						
0100	Cash and Cash Equivalents			5,473,682		
0110	Investments					
0120	Taxes Receivable					
0130	Due From Other Funds					
0141	Due From Other Governments					
0142	State Revenue Receivable					
0143	Federal Revenue Receivable					
0145	Other Intergovernmental Revenue Receivable					
0146	Due from Primary Government					
0147	Due from Component Unit					
0150	Other Receivables					
0170	Inventories					
0180	Prepaid Expenses (Expenditures)					
0190	Other Current Assets					
Total Assets				\$5,473,682		
0910	Deferred Outflows of Resources					
Total Assets And Deferred Outflows Of Resources				\$5,473,682		

LEA : 123465303 Methacton SD

Printed 10/14/2020 1:59:30 PM

Amounts Expressed in Whole Dollars		<u>Total Governmental</u> <u>Funds</u>
Assets And Deferred Outflows Of Resources		
Assets		
0100 Cash and Cash Equivalents		32,679,546
0110 Investments		
0120 Taxes Receivable		1,984,774
0130 Due From Other Funds		375,087
0141 Due From Other Governments		
0142 State Revenue Receivable		2,826,547
0143 Federal Revenue Receivable		422,775
0145 Other Intergovernmental Revenue Receivable		
0146 Due from Primary Government		
0147 Due from Component Unit		
0150 Other Receivables		35,603
0170 Inventories		
0180 Prepaid Expenses (Expenditures)		1,670,562
0190 Other Current Assets		
Total Assets		\$39,994,894
0910 Deferred Outflows of Resources		
Total Assets And Deferred Outflows Of Resources		\$39,994,894

LEA : 123465303 Methacton SD

Printed 10/14/2020 1:59:30 PM

Amounts Expressed in Whole Dollars	General Fund (10)	Student Sponsored Activity Fund (21)	Public Purpose Trust (27)	Other Compt Approved (28)	Athletic / Activity (29)
Liabilities And Deferred Inflows Of Resources And Fund Balances					
Liabilities					
0400 Due to Other Funds	16,998				
0411 Due to Other Governments					
0412 Due to Primary Government					
0413 Due to Component Unit					
0420 Accounts Payable	1,558,072				
0430 Contracts Payable					
0440 Current Portion of Long-Term Debt	149,313				
0450 Short-Term Payables					
0461 Accrued Salaries and Benefits	4,618,174				
0462 Payroll Deductions and Withholding	4,616,998				
0480 Unearned Revenues	57,754				
0490 Other Current Liabilities	5,618,084				
Total Liabilities	\$16,635,393				
0950 Deferred Inflows of Resources	1,355,386				
Fund Balances					
0810 Nonspendable Fund Balance	1,670,562				
0820 Restricted Fund Balance					
0830 Committed Fund Balance	7,034,557				
0840 Assigned Fund Balance					
0850 Unassigned Fund Balance	7,825,314				
Total Fund Balances	\$16,530,433				
Total Liabilities, Deferred Inflows Of Resources And Fund Balances	\$34,521,212				

LEA : 123465303 Methacton SD

Printed 10/14/2020 1:59:30 PM

Amounts Expressed in Whole Dollars	<u>Capital Reserve (690.</u> <u>1850)</u> <u>(31)</u>	<u>Capital Reserve (1431)</u> <u>(32)</u>	<u>Other Capital Projects</u> <u>Fund</u> <u>(39)</u>	<u>Debt Service</u> <u>(40)</u>	<u>Permanent</u> <u>(90)</u>
Liabilities And Deferred Inflows Of Resources And Fund Balances					
Liabilities					
0400 Due to Other Funds			375,087		
0411 Due to Other Governments					
0412 Due to Primary Government					
0413 Due to Component Unit					
0420 Accounts Payable			938,773		
0430 Contracts Payable					
0440 Current Portion of Long-Term Debt					
0450 Short-Term Payables					
0461 Accrued Salaries and Benefits					
0462 Payroll Deductions and Withholding					
0480 Unearned Revenues					
0490 Other Current Liabilities					
Total Liabilities			\$1,313,860		
0950 Deferred Inflows of Resources					
Fund Balances					
0810 Nonspendable Fund Balance					
0820 Restricted Fund Balance					
0830 Committed Fund Balance					
0840 Assigned Fund Balance			4,159,822		
0850 Unassigned Fund Balance					
Total Fund Balances			\$4,159,822		
Total Liabilities, Deferred Inflows Of Resources And Fund Balances			\$5,473,682		

LEA : 123465303 Methacton SD

Printed 10/14/2020 1:59:30 PM

Amounts Expressed in Whole Dollars		<u>Total Governmental Funds</u>
Liabilities And Deferred Inflows Of Resources And Fund Balances		
Liabilities		
0400 Due to Other Funds		392,085
0411 Due to Other Governments		
0412 Due to Primary Government		
0413 Due to Component Unit		
0420 Accounts Payable		2,496,845
0430 Contracts Payable		
0440 Current Portion of Long-Term Debt		149,313
0450 Short-Term Payables		
0461 Accrued Salaries and Benefits		4,618,174
0462 Payroll Deductions and Withholding		4,616,998
0480 Unearned Revenues		57,754
0490 Other Current Liabilities		5,618,084
Total Liabilities		\$17,949,253
0950 Deferred Inflows of Resources		1,355,386
Fund Balances		
0810 Nonspendable Fund Balance		1,670,562
0820 Restricted Fund Balance		
0830 Committed Fund Balance		7,034,557
0840 Assigned Fund Balance		4,159,822
0850 Unassigned Fund Balance		7,825,314
Total Fund Balances		\$20,690,255
Total Liabilities, Deferred Inflows Of Resources And Fund Balances		\$39,994,894

Amounts Expressed in Whole Dollars	<u>General Fund</u> <u>(10)</u>	<u>Student Sponsored</u> <u>Activity Fund</u> <u>(21)</u>	<u>Public Purpose Trust</u> <u>(27)</u>	<u>Other Compt Approved</u> <u>(28)</u>	<u>Athletic / Activity</u> <u>(29)</u>
Revenues					
6000 Revenue from Local Sources	86,833,474				
7000 Revenue from State Sources	24,093,321				
8000 Revenue from Federal Sources	676,509				
Total Revenues	\$111,603,304				
Expenditures					
1000 Instruction	61,766,043				
2000 Support Services	34,774,864				
3000 Operation of Non-Instructional Services	1,529,132				
4000 Facilities Acquisition, Construction and Improvement Services					
5110 Debt Service	10,259,993				
5130 Refund of Prior Year Revenues / Receipts	108,618				
Total Expenditures	\$108,438,650				
Excess (Deficiency) Of Revenues Over Expenditures	\$3,164,654				
Other Financing Sources (Uses)					
9110 Face Value of Bonds Issued					
9120 Proceeds from Refunding of Bonds					
9130 Bond Premiums					
9200 Proceeds from Extended-Term Financing					
9300 Interfund Transfers - IN					
9400 Sale of or Compensation for Loss of Fixed Assets					
9710 Transfers from Component Units					
9720 Transfers from Primary Governments					
9910 Other Financing Sources Not Listed in the 9000 Series					
9990 Insurance Recoveries	12,440				
5120 Debt Service – Refunded Bonds					
5150 Bond Discounts					
5200 Interfund Transfers – Out					
5300 Transfers Out to Component Units/Primary Governments					
Total Other Financing Sources (Uses)	\$12,440				

Amounts Expressed in Whole Dollars	<u>Capital Reserve (690.1850)</u> <u>(31)</u>	<u>Capital Reserve (1431)</u> <u>(32)</u>	<u>Other Capital Projects</u> <u>Fund</u> <u>(39)</u>	<u>Debt Service</u> <u>(40)</u>	<u>Permanent</u> <u>(90)</u>
Revenues					
6000 Revenue from Local Sources			70,348		
7000 Revenue from State Sources					
8000 Revenue from Federal Sources					
Total Revenues			\$70,348		
Expenditures					
1000 Instruction					
2000 Support Services			263,152		
3000 Operation of Non-Instructional Services					
4000 Facilities Acquisition, Construction and Improvement Services			5,658,825		
5110 Debt Service			315		
5130 Refund of Prior Year Revenues / Receipts					
Total Expenditures			\$5,922,292		
Excess (Deficiency) Of Revenues Over Expenditures			(\$5,851,944)		
Other Financing Sources (Uses)					
9110 Face Value of Bonds Issued			8,495,000		
9120 Proceeds from Refunding of Bonds			7,495,000		
9130 Bond Premiums			1,237,211		
9200 Proceeds from Extended-Term Financing					
9300 Interfund Transfers - IN					
9400 Sale of or Compensation for Loss of Fixed Assets					
9710 Transfers from Component Units					
9720 Transfers from Primary Governments					
9910 Other Financing Sources Not Listed in the 9000 Series					
9990 Insurance Recoveries					
5120 Debt Service – Refunded Bonds			7,950,455		
5150 Bond Discounts			108,183		
5200 Interfund Transfers – Out					
5300 Transfers Out to Component Units/Primary Governments					
Total Other Financing Sources (Uses)			\$9,168,573		

Amounts Expressed in Whole Dollars		<u>Total Governmental Funds</u>
Revenues		
6000	Revenue from Local Sources	86,903,822
7000	Revenue from State Sources	24,093,321
8000	Revenue from Federal Sources	676,509
Total Revenues		\$111,673,652
Expenditures		
1000	Instruction	61,766,043
2000	Support Services	35,038,016
3000	Operation of Non-Instructional Services	1,529,132
4000	Facilities Acquisition, Construction and Improvement Services	5,658,825
5110	Debt Service	10,260,308
5130	Refund of Prior Year Revenues / Receipts	108,618
Total Expenditures		\$114,360,942
Excess (Deficiency) Of Revenues Over Expenditures		(\$2,687,290)
Other Financing Sources (Uses)		
9110	Face Value of Bonds Issued	8,495,000
9120	Proceeds from Refunding of Bonds	7,495,000
9130	Bond Premiums	1,237,211
9200	Proceeds from Extended-Term Financing	
9300	Interfund Transfers - IN	
9400	Sale of or Compensation for Loss of Fixed Assets	
9710	Transfers from Component Units	
9720	Transfers from Primary Governments	
9910	Other Financing Sources Not Listed in the 9000 Series	
9990	Insurance Recoveries	12,440
5120	Debt Service – Refunded Bonds	7,950,455
5150	Bond Discounts	108,183
5200	Interfund Transfers – Out	
5300	Transfers Out to Component Units/Primary Governments	
Total Other Financing Sources (Uses)		\$9,181,013

Amounts Expressed in Whole Dollars		<u>General Fund</u> <u>(10)</u>	<u>Student Sponsored</u> <u>Activity Fund</u> <u>(21)</u>	<u>Public Purpose Trust</u> <u>(27)</u>	<u>Other Compt Approved</u> <u>(28)</u>	<u>Athletic / Activity</u> <u>(29)</u>
Special And Extraordinary Items						
9920	Special Items – Gains					
9930	Extraordinary Items – Gains					
5520	Special Items – Losses					
5530	Extraordinary Items – Losses					
Net Change In Fund Balances		\$3,177,094				
Fund Balance						
0001	Fund Balance - Beginning of Fiscal Year	13,353,340				
Fund Balance - End Of Year		\$16,530,434				

Amounts Expressed in Whole Dollars		<u>Capital Reserve (690.</u> <u>1850)</u> <u>(31)</u>	<u>Capital Reserve (1431)</u> <u>(32)</u>	<u>Other Capital Projects</u> <u>Fund</u> <u>(39)</u>	<u>Debt Service</u> <u>(40)</u>	<u>Permanent</u> <u>(90)</u>
Special And Extraordinary Items						
9920	Special Items – Gains					
9930	Extraordinary Items – Gains					
5520	Special Items – Losses					
5530	Extraordinary Items – Losses					
Net Change In Fund Balances				\$3,316,629		
Fund Balance						
0001	Fund Balance - Beginning of Fiscal Year			843,191		
Fund Balance - End Of Year				\$4,159,820		

Amounts Expressed in Whole Dollars		<u>Total Governmental Funds</u>
Special And Extraordinary Items		
9920	Special Items – Gains	
9930	Extraordinary Items – Gains	
5520	Special Items – Losses	
5530	Extraordinary Items – Losses	
Net Change In Fund Balances		\$6,493,723
Fund Balance		
0001	Fund Balance - Beginning of Fiscal Year	14,196,531
Fund Balance - End Of Year		\$20,690,254

LEA : 123465303 Methacton SD

Printed 10/14/2020 1:59:41 PM

Amounts Expressed in Whole Dollars	<u>Food Service</u> (51)	<u>Child Care</u> <u>Operations</u> (52)	<u>Other Enterprise</u> (58)	<u>TOTAL</u>	<u>Internal Service</u> (60)
Assets And Deferred Outflows Of Resources					
Current Assets					
0100 Cash and Cash Equivalents	346,890			346,890	
0110 Investments					
0130 Due From Other Funds	16,989			16,989	
0141 Due From Other Governments					
0142 State Revenue Receivable					
0143 Federal Revenue Receivable					
0146 Due from Primary Government					
0147 Due from Component Unit					
0150 Other Receivables	8,000			8,000	
0170 Inventories	51,698			51,698	
0180 Prepaid Expenses (Expenditures)					
0190 Other Current Assets					
Total Current Assets	\$423,577			\$423,577	
Noncurrent Assets					
0211 Land					
0212 Site Improvements (Net)					
0220 Buildings and Building Improvements (Net)					
0230 Machinery, Equipment and Furniture (Net)	73,982			73,982	
0250 Construction in Progress					
0260 Long Term Prepayments					
0290 Other Noncurrent Assets					
Total Noncurrent Assets	\$73,982			\$73,982	
0910 Deferred Outflows of Resources					
Total Assets And Deferred Outflows Of Resources	\$497,559			\$497,559	

LEA : 123465303 Methacton SD

Printed 10/14/2020 1:59:41 PM

Amounts Expressed in Whole Dollars	Food Service (51)	Child Care Operations (52)	Other Enterprise (58)	TOTAL	Internal Service (60)
Liabilities And Deferred Inflows Of Resources And Net Position					
Current Liabilities					
0400 Due to Other Funds					
0411 Due to Other Governments					
0413 Due to Component Unit					
0420 Accounts Payable	20,655			20,655	
0430 Contracts Payable	19,639			19,639	
0440 Current Portion of Long-Term Debt					
0450 Short-Term Payables					
0461 Accrued Salaries and Benefits					
0462 Payroll Deductions and Withholding					
0480 Unearned Revenues					
0490 Other Current Liabilities	100,693			100,693	
Total Current Liabilities	\$140,987			\$140,987	
Noncurrent Liabilities					
0510 Bonds Payable					
0520 Extended-Term Financing Agreements Payable					
0530 Lease-Purchase Obligations					
0540 Accumulated Compensated Absences					
0550 Authority Lease Obligations					
0560 Other Post-Employment Benefits (OPEB)					
0570 Net Pension Liability					
0599 Other Noncurrent Liabilities					
Total Noncurrent Liabilities					
Total Liabilities	\$140,987			\$140,987	
0950 Deferred Inflows of Resources					
Net Position					
0791 Net Investment in Capital Assets	73,982			73,982	
0008 Restricted Net Position (0792 – 0798)					
0799 Unrestricted Net Position	282,590			282,590	
Total Net Position	\$356,572			\$356,572	
Total Liabilities And Deferred Inflows Of Resources And Net Position	\$497,559			\$497,559	

Amounts Expressed in Whole Dollars	<u>Food Service</u> <u>(51)</u>	<u>Child Care Operations</u> <u>(52)</u>	<u>Other Enterprise</u> <u>(58)</u>	<u>TOTAL</u>	<u>Internal Service</u> <u>(60)</u>
Operating Revenues					
6600 Food Service Revenue	790,430			790,430	
0071 Charges for Services					
0072 Other Operating Revenue					
Total Operating Revenues	\$790,430			\$790,430	
Operating Expenses					
100 Personnel Services – Salaries					
200 Personnel Services – Employee Benefits					
300 Purchased Professional and Technical Services					
400 Purchased Property Services					
500 Other Purchased Services	1,057,069			1,057,069	
600 Supplies	55,616			55,616	
740 Depreciation	11,425			11,425	
810 Dues and Fees					
890 Miscellaneous Expenditures					
Total Operating Expenses	\$1,124,110			\$1,124,110	
Operating Income (Loss)	(\$333,680)			(\$333,680)	
Non Operating Revenues (Expenses)					
6500 Earnings on Investments	5,844			5,844	
6920 Contributions and Donations from Private Sources					
6930 Gains or Losses on Sale of Fixed Assets					
6991 Refunds of a Prior Year Expenditure					
7000 Revenue from State Sources	23,797			23,797	
8000 Revenue from Federal Sources	340,018			340,018	
9990 Insurance Recoveries					
820 Claims and Judgments Against the LEA					
830 Interest					
TOTAL Non Operating Revenues (Expenses)	\$369,659			\$369,659	
Income (Loss) Before Contributions And Transfers	\$35,979			\$35,979	

Amounts Expressed in Whole Dollars	<u>Food Service</u> (51)	<u>Child Care Operations</u> (52)	<u>Other Enterprise</u> (58)	<u>TOTAL</u>	<u>Internal Service</u> (60)
Contributions, Transfers, and Special and Extraordinary Items					
5200 Interfund Transfers – Out					
5300 Transfers Out to Component Units/Primary Governments					
5520 Special Items – Losses					
5530 Extraordinary Items – Losses					
9300 Interfund Transfers - IN					
9500 Capital Contributions					
9700 Transfers IN From Component Units/Primary Governments					
9920 Special Items – Gains					
9930 Extraordinary Items – Gains					
Change In Net Position	\$35,979			\$35,979	
0002 Net Position - Beginning of Fiscal Year	320,592			320,592	
0003 Accounting Changes / Residual Equity Transfers					
Net Position - End Of Year	\$356,571			\$356,571	

LEA : 123465303 Methacton SD

Printed 10/14/2020 1:59:52 PM

Amounts Expressed in Whole Dollars	<u>Food Service</u> <u>(51)</u>	<u>Child Care Operations</u> <u>(52)</u>	<u>Other Enterprise</u> <u>(58)</u>	<u>TOTAL</u>	<u>Internal Service(60)</u>
Cash Flows From Operating Activities					
0011 Cash Receipts From Users	782,496			782,496	
0012 Cash Receipts From Assessments Made to Other Funds					
0013 Cash Receipts From Earnings on Investments					
0014 Cash Receipts From Other Operating Revenue					
0015 Cash Payments To Employees For Services					
0016 Cash Payments For Insurance Claims					
0017 Cash Payments To Suppliers For Goods and Services	1,175,337			1,175,337	
0018 Cash Payments For Other Operating Expenses					
Net Cash Provided By (Used For) Operating Activities	(\$392,841)			(\$392,841)	
Cash Flows From Non-Capital Financing Activities					
0021 Receipts From Local Sources - 6000					
0022 Receipts From State Sources - 7000	25,343			25,343	
0023 Receipts From Federal Sources -8000	357,410			357,410	
0024 Notes and Loans Received (Repaid)					
0025 Interest Paid on Notes/Loans - 5100-830					
0026 Operating Transfers In (Out)/Residual Equity Trans					
0027 Operating Transfers In (Out) Primary Government / Comp Unit					
0028 Receipts From Refund of Prior Year Expenditures - 6991					
0029 Special and Extraordinary Gains (losses)					
0030 Receipts from Insurance Recoveries -9990					
Net Cash Prov By (Used for) Non-Capital Financing Activities	\$382,753			\$382,753	
Cash Flows From Capital and Related Financing Activities					
0031 Payments For Fac Acq, Const, and Imp - 4000					
0032 Gain / (Loss) on Sale of Fixed Assets - 6930					
0033 Proceeds From Extended Term Financing - 9200					
0034 Principal Paid on Financing Agreements					
0035 Interest Paid on Financing Agreements - 5100-830					
0036 (Inc) Dec in Contributed Capital					
Net Cash Prov By (Used for) Capital and Related Financing Activities					
Cash Flows From Investing Activities					
0041 Earnings on Investments - 6500	5,844			5,844	
0042 Purchase of Inv Securities / Deposits to Inv Pools					
0043 Receipts From Investment Pool Withdrawals					
0044 Proceeds from Sale and Maturity of Inv Securities					

LEA : 123465303 Methacton SD

Printed 10/14/2020 1:59:52 PM

0045 Loans Received (Paid)

Net Cash Prov By (Used for) Investing Activities	\$5,844	\$5,844
--	---------	---------

LEA : 123465303 Methacton SD

Printed 10/14/2020 1:59:52 PM

	Food Service (51)	Child Care Operations (52)	Other Enterprise (58)	TOTAL	Internal Service (60)
Net Increase (Decrease) in Cash Flows	(4,244)			(4,244)	
0004 Cash and Cash Equivalents Beginning of Year	351,134			351,134	
Cash and Cash Equivalents at Year End	\$346,890			\$346,890	
Reconciliation of Operating Income (Loss) To Net Cash Provided by (Used For) Operating Activities					
0005 Operating Income (Loss) per REP	(333,680)			(333,680)	
Adjustments					
0051 Depreciation and Net Amortization	11,425			11,425	
0052 Provision for Uncollectible Accounts					
0053 Other Adjustments					
Effect of Changes in Assets, Liabilities, Deferred Outflows and Deferred Inflows					
0054 (Inc) Dec In Accounts Receivable (0120-0150)	(7,934)			(7,934)	
0055 Advances to Other Funds (0160)					
0056 (Inc) Dec in Inventories (0170)	(28,842)			(28,842)	
0057 (Inc) Dec in Prepaid Expenses (0180)					
0058 (Inc) Dec in Other Current or Noncurrent Assets	(6,042)			(6,042)	
0064 Deferred Outflows (0910)					
0059 Inc (Dec) in Accounts Payable (0400-0450)	(88,653)			(88,653)	
0060 Inc (Dec) in Accrued Salaries/Benefits (0461)					
0065 Inc (Dec) in Net Pension Liabilities (0570)					
0066 Inc (Dec) in Other Postemp Benefit Oblig (0560)					
0061 Inc (Dec) in Payroll Deductions/Withholding (0462)					
0062 Inc (Dec) in Unearned Revenue (0480)	8,721			8,721	
0063 Inc (Dec) in Other Current or Noncurrent Liabilities	52,164			52,164	
0067 Deferred Inflows (0950)					
Total Adjustments	(\$59,161)			(\$59,161)	
Cash Provided By (Used for) Total	(\$392,841)			(\$392,841)	

COMBINED STATEMENT OF CASH FLOWS
SCHEDULE OF NONCASH INVESTING, CAPITAL, AND FINANCING ACTIVITIES

Explanation of Transaction and Balance Sheet Effect	Amount
Donated Commodities Received	78,228
Donated Commodities Used	69,507
Total	\$147,735

LEA : 123465303 Methacton SD

Printed 10/14/2020 1:59:54 PM

Amounts Expressed in Whole Dollars	Private Purpose Trust (71)	Investment Trust (72)	Pension Trust (73)	Student Activity Custodial (81)
Assets And Deferred Outflows Of Resources				
Assets				
0100 Cash and Cash Equivalents	92,772			313,392
0110 Investments				
0130 Due From Other Funds				9
0140 Due from Other Governments, Primary Government and Component Units				
0150 Other Receivables				1,842
0170 Inventories				
0180 Prepaid Expenses (Expenditures)				2,000
0190 Other Current Assets				
0220 Buildings and Building Improvements (Net)				
0230 Machinery, Equipment and Furniture (Net)				
Total Assets	\$92,772			\$317,243
0910 Deferred Outflows of Resources				
Total Assets And Deferred Outflows Of Resources	\$92,772			\$317,243

LEA : 123465303 Methacton SD

Printed 10/14/2020 1:59:54 PM

Amounts Expressed in Whole Dollars		<u>Other Custodial</u> <u>(89)</u>	<u>Fiduciary Component Units</u> <u>(98)</u>	<u>Total Fiduciary Funds</u>
Assets And Deferred Outflows Of Resources				
Assets				
0100	Cash and Cash Equivalents			406,164
0110	Investments			
0130	Due From Other Funds			9
0140	Due from Other Governments, Primary Government and Component Units			
0150	Other Receivables			1,842
0170	Inventories			
0180	Prepaid Expenses (Expenditures)			2,000
0190	Other Current Assets			
0220	Buildings and Building Improvements (Net)			
0230	Machinery, Equipment and Furniture (Net)			
Total Assets				\$410,015
0910	Deferred Outflows of Resources			
Total Assets And Deferred Outflows Of Resources				\$410,015

LEA : 123465303 Methacton SD

Printed 10/14/2020 1:59:54 PM

Amounts Expressed in Whole Dollars		<u>Private Purpose Trust</u>	<u>Investment Trust</u>	<u>Pension Trust</u>	<u>Student Activity Custodial</u>
		<u>(71)</u>	<u>(72)</u>	<u>(73)</u>	<u>(81)</u>
Liabilities, Deferred Inflows Of Resources And Net Position					
Liabilities					
0400	Due to Other Funds				
0410	Due to Other Governments, Primary Government and Component Units				
0420	Accounts Payable				86,760
0430	Contracts Payable				
0450	Short-Term Payables				
0460	Payroll Accruals and Withholdings				
0480	Unearned Revenues				
0490	Other Current Liabilities				230,483
Total Liabilities					\$317,243
0950	Deferred Inflows of Resources				
Net Position					
0791	Net Investment in Capital Assets				
0009	Restricted Net Position (0792 – 0798)	92,772			
0799	Unrestricted Net Position				
Total Net Position		\$92,772			
Total Liabilities, Deferred Inflows Of Resources And Net Position		\$92,772			\$317,243

LEA : 123465303 Methacton SD

Printed 10/14/2020 1:59:54 PM

Amounts Expressed in Whole Dollars		<u>Other Custodial</u> <u>(89)</u>	<u>Fiduciary Component Units</u> <u>(98)</u>	<u>Total Fiduciary Funds</u>
Liabilities, Deferred Inflows Of Resources And Net Position				
Liabilities				
0400	Due to Other Funds			
0410	Due to Other Governments, Primary Government and Component Units			
0420	Accounts Payable			86,760
0430	Contracts Payable			
0450	Short-Term Payables			
0460	Payroll Accruals and Withholdings			
0480	Unearned Revenues			
0490	Other Current Liabilities			230,483
Total Liabilities				\$317,243
0950	Deferred Inflows of Resources			
Net Position				
0791	Net Investment in Capital Assets			
0009	Restricted Net Position (0792 – 0798)			92,772
0799	Unrestricted Net Position			
Total Net Position				\$92,772
Total Liabilities, Deferred Inflows Of Resources And Net Position				\$410,015

LEA : 123465303 Methacton SD

Printed 10/14/2020 1:59:57 PM

Amounts Expressed in Whole Dollars		<u>Private Purpose Trust</u> <u>(71)</u>	<u>Investment Trust</u> <u>(72)</u>	<u>Pension Trust</u> <u>(73)</u>	<u>Student Activity</u> <u>Custodial</u> <u>(81)</u>	<u>Other Custodial</u> <u>(89)</u>	<u>Fiduciary Component</u> <u>Units</u> <u>(98)</u>
Additions							
0091	Gifts and Contributions	7,700					
0095	Net Investment Earnings	927					
0092	Other Additions						
Deductions							
0093	Scholarships Awarded	11,650					
0094	Other Deductions						
Change In Net Position		(\$3,023)					
0006	Net Position – Beginning of Fiscal Year	95,795					
0007	Net Position Held in Trust for Pension Benefits						
Net Position - End of Fiscal Year		\$92,772					

LEA : 123465303 Methacton SD

Printed 10/14/2020 1:59:57 PM

Amounts Expressed in Whole Dollars		<u>Total Fiduciary</u>
		<u>Funds</u>
Additions		
0091	Gifts and Contributions	7,700
0095	Net Investment Earnings	927
0092	Other Additions	
Deductions		
0093	Scholarships Awarded	11,650
0094	Other Deductions	
Change In Net Position		(\$3,023)
0006	Net Position – Beginning of Fiscal Year	95,795
0007	Net Position Held in Trust for Pension Benefits	
Net Position - End of Fiscal Year		\$92,772

LEA : 123465303 Methacton SD

General Fund (10)

Printed 10/14/2020 2:00:05 PM

Page - 1 of 4

	Revenue Reported In Current Year	Current Year Tax Accrual	Prior Year Tax Accrual	Taxes Collected In Current Year
Revenue from Local Sources				
6111 Current Real Estate Taxes	73,889,330.20			73,889,330.20
6112 Interim Real Estate Taxes	448,144.37	39,748.88	36,287.45	444,682.94
6113 Public Utility Realty Taxes	74,768.10			74,768.10
6114 Payments in Lieu of Current Taxes - State / Local	60,217.74			60,217.74
6120 Current Per Capita Taxes, Section 679	60,066.27		47,843.30	107,909.57
6141 Current Act 511 Per Capita Taxes	60,066.25		47,843.30	107,909.55
6142 Current Act 511 Occupation Taxes - Flat Rate	108,806.50	2,568.94	2,894.96	109,132.52
6151 Current Act 511 Earned Income Taxes	7,270,155.99	364,498.42	142,154.51	7,047,812.08
6153 Current Act 511 Real Estate Transfer Taxes	1,119,282.48	171,210.54	237,767.49	1,185,839.43
6154 Current Act 511 Amusement Taxes	8,526.76			8,526.76
6411 Delinquent Real Estate Taxes	1,331,865.58	51,057.59	80,486.90	1,361,294.89
6420 Delinquent Per Capita Taxes, Section 679	22,889.97	151.71	4,199.46	26,937.72
6440 Delinquent Local Enabling Taxes - Flat Rate Assessments	22,889.97	151.70	4,199.48	26,937.75
6500 Earnings on Investments	753,528.10			
6700 Revenues from LEA Activities	159,720.58			
6831 Federal Revenue Received from Other Pennsylvania Public LEAs	13,261.50			
6832 Federal IDEA Revenue Received as Pass Through	791,583.18			
6910 Rentals	88,748.33			
6920 Contributions and Donations from Private Sources	1,886.84			
6942 Summer School Tuition	38,407.01			
6943 Adult Education Tuition	103,521.84			
6944 Receipts from Other LEAs in Pennsylvania - Education	295,275.00			
6961 Transportation Services Provided Other Pennsylvania LEAs	10,640.46			
6991 Refunds of a Prior Year Expenditure	53,072.60			
6992 Energy Efficiency Revenues and Incentives	39,029.74			
6999 Other Revenues Not Specified Above	7,788.95			
TOTAL Revenue from Local Sources	\$86,833,474.31	\$629,387.78	\$603,676.85	\$84,451,299.25

	Revenue Reported In Current Year			
Revenue from State Sources				
7111 Basic Education Funding-Formula	6,986,867.87			
7112 Basic Education Funding-Social Security	1,593,364.56			
7160 Tuition for Orphans Subsidy	101,262.48			
7271 Special Education funds for School-Aged Pupils	2,643,688.17			
7311 Pupil Transportation Subsidy	1,754,539.70			
7312 Nonpublic and Charter School Pupil Transportation Subsidy	280,280.00			
7320 Rental and Sinking Fund Payments / Building Reimbursement Subsidy	672,223.34			
7330 Health Services (Medical, Dental, Nurse, Act 25)	88,388.46			
7340 State Property Tax Reduction Allocation	2,051,094.29			
7505 Ready to Learn Block Grant	252,829.00			
7820 State Share of Retirement Contributions	7,668,782.96			
TOTAL Revenue from State Sources	\$24,093,320.83			

	Revenue Reported In Current Year			
<u>Revenue from Federal Sources</u>				
8514 NCLB, Title I - Improving the Academic Achievement of the Disadvantaged	252,576.17			
8515 NCLB, Title II - Preparing, Training and Recruiting High Quality Teachers and Principals	92,279.00			
8517 NCLB, Title IV - 21St Century Schools	18,240.59			
8749 Other CARES Act Funding	149,799.54			
8810 School-Based Access Medicaid Reimbursement Program (SBAP) Reimbursements (Access)	150,000.00			
8820 Medical Assistance Reimbursement for Administrative Claiming (Quarterly) Program	13,613.87			
TOTAL Revenue from Federal Sources	\$676,509.17			

	Revenue Reported In Current Year			
<u>Other Financing Sources</u>				
9990 Insurance Recoveries	12,440.18			
TOTAL Other Financing Sources	\$12,440.18			
TOTAL FROM ALL SOURCES	\$111,615,744.49	\$629,387.78	\$603,676.85	\$84,451,299.25

LEA : 123465303 Methacton SD

Printed 10/14/2020 2:00:14 PM

	General Fund (10)	Student Sponsored Activity Fund (21)	Public Purpose Trust (27)	Other Compt Approved (28)	Athletic / Activity (29)	Capital Reserve (690, 1850) (31)
6000 Revenue from Local Sources						
6111 Current Real Estate Taxes	73,889,330.20					
6112 Interim Real Estate Taxes	448,144.37					
6113 Public Utility Realty Taxes	74,768.10					
6114 Payments in Lieu of Current Taxes - State / Local	60,217.74					
6120 Current Per Capita Taxes, Section 679	60,066.27					
6141 Current Act 511 Per Capita Taxes	60,066.25					
6142 Current Act 511 Occupation Taxes - Flat Rate	108,806.50					
6151 Current Act 511 Earned Income Taxes	7,270,155.99					
6153 Current Act 511 Real Estate Transfer Taxes	1,119,282.48					
6154 Current Act 511 Amusement Taxes	8,526.76					
6411 Delinquent Real Estate Taxes	1,331,865.58					
6420 Delinquent Per Capita Taxes, Section 679	22,889.97					
6440 Delinquent Local Enabling Taxes - Flat Rate Assessments	22,889.97					
6500 Earnings on Investments	753,528.10					
6700 Revenues from LEA Activities	159,720.58					
6831 Federal Revenue Received from Other Pennsylvania Public LEAs	13,261.50					
6832 Federal IDEA Revenue Received as Pass Through	791,583.18					
6910 Rentals	88,748.33					
6920 Contributions and Donations from Private Sources	1,886.84					
6942 Summer School Tuition	38,407.01					
6943 Adult Education Tuition	103,521.84					
6944 Receipts from Other LEAs in Pennsylvania - Education	295,275.00					
6961 Transportation Services Provided Other Pennsylvania LEAs	10,640.46					
6991 Refunds of a Prior Year Expenditure	53,072.60					
6992 Energy Efficiency Revenues and Incentives	39,029.74					
6999 Other Revenues Not Specified Above	7,788.95					
6000 Total Revenue from Local Sources	\$86,833,474.31					
7000 Revenue from State Sources						
7111 Basic Education Funding-Formula	6,986,867.87					
7112 Basic Education Funding-Social Security	1,593,364.56					
7160 Tuition for Orphans Subsidy	101,262.48					
7271 Special Education funds for School-Aged Pupils	2,643,688.17					
7311 Pupil Transportation Subsidy	1,754,539.70					
7312 Nonpublic and Charter School Pupil Transportation Subsidy	280,280.00					
7320 Rental and Sinking Fund Payments / Building Reimbursement Subsidy	672,223.34					

LEA : 123465303 Methacton SD

Printed 10/14/2020 2:00:14 PM

	Capital Reserve (1431) (32)	Other Capital Projects Fund (39)	Debt Service (40)	Permanent (90)	Total
6000 Revenue from Local Sources					
6111 Current Real Estate Taxes					73,889,330.20
6112 Interim Real Estate Taxes					448,144.37
6113 Public Utility Realty Taxes					74,768.10
6114 Payments in Lieu of Current Taxes - State / Local					60,217.74
6120 Current Per Capita Taxes, Section 679					60,066.27
6141 Current Act 511 Per Capita Taxes					60,066.25
6142 Current Act 511 Occupation Taxes - Flat Rate					108,806.50
6151 Current Act 511 Earned Income Taxes					7,270,155.99
6153 Current Act 511 Real Estate Transfer Taxes					1,119,282.48
6154 Current Act 511 Amusement Taxes					8,526.76
6411 Delinquent Real Estate Taxes					1,331,865.58
6420 Delinquent Per Capita Taxes, Section 679					22,889.97
6440 Delinquent Local Enabling Taxes - Flat Rate Assessments					22,889.97
6500 Earnings on Investments		70,348.21			823,876.31
6700 Revenues from LEA Activities					159,720.58
6831 Federal Revenue Received from Other Pennsylvania Public LEAs					13,261.50
6832 Federal IDEA Revenue Received as Pass Through					791,583.18
6910 Rentals					88,748.33
6920 Contributions and Donations from Private Sources					1,886.84
6942 Summer School Tuition					38,407.01
6943 Adult Education Tuition					103,521.84
6944 Receipts from Other LEAs in Pennsylvania - Education					295,275.00
6961 Transportation Services Provided Other Pennsylvania LEAs					10,640.46
6991 Refunds of a Prior Year Expenditure					53,072.60
6992 Energy Efficiency Revenues and Incentives					39,029.74
6999 Other Revenues Not Specified Above					7,788.95
6000 Total Revenue from Local Sources		\$70,348.21			\$86,903,822.52
7000 Revenue from State Sources					
7111 Basic Education Funding-Formula					6,986,867.87
7112 Basic Education Funding-Social Security					1,593,364.56
7160 Tuition for Orphans Subsidy					101,262.48
7271 Special Education funds for School-Aged Pupils					2,643,688.17
7311 Pupil Transportation Subsidy					1,754,539.70
7312 Nonpublic and Charter School Pupil Transportation Subsidy					280,280.00
7320 Rental and Sinking Fund Payments / Building Reimbursement Subsidy					672,223.34

LEA : 123465303 Methacton SD

Printed 10/14/2020 2:00:14 PM

	<u>General Fund (10)</u>	<u>Student Sponsored Activity Fund (21)</u>	<u>Public Purpose Trust (27)</u>	<u>Other Compt Approved (28)</u>	<u>Athletic / Activity (29)</u>	<u>Capital Reserve (690, 1850) (31)</u>
7000 Revenue from State Sources						
7330 Health Services (Medical, Dental, Nurse, Act 25)	88,388.46					
7340 State Property Tax Reduction Allocation	2,051,094.29					
7505 Ready to Learn Block Grant	252,829.00					
7820 State Share of Retirement Contributions	7,668,782.96					
7000 Total Revenue from State Sources	\$24,093,320.83					
8000 Revenue from Federal Sources						
8514 NCLB, Title I - Improving the Academic Achievement of the Disadvantaged	252,576.17					
8515 NCLB, Title II - Preparing, Training and Recruiting High Quality Teachers and Principals	92,279.00					
8517 NCLB, Title IV - 21st Century Schools	18,240.59					
8749 Other CARES Act Funding	149,799.54					
8810 School-Based Access Medicaid Reimbursement Program (SBAP) Reimbursements (Access)	150,000.00					
8820 Medical Assistance Reimbursement for Administrative Claiming (Quarterly) Program	13,613.87					
8000 Total Revenue from Federal Sources	\$676,509.17					
9000 Other Financing Sources						
9110 Face Value of Bonds Issued						
9120 Proceeds from Refunding of Bonds						
9130 Bond Premiums						
9990 Insurance Recoveries	12,440.18					
9000 Total Other Financing Sources	\$12,440.18					
Total From All Sources	\$111,615,744.49					

LEA : 123465303 Methacton SD

Printed 10/14/2020 2:00:14 PM

	<u>Capital Reserve</u> <u>(1431) (32)</u>	<u>Other Capital</u> <u>Projects Fund (39)</u>	<u>Debt Service (40)</u>	<u>Permanent (90)</u>	<u>Total</u>
7000 Revenue from State Sources					
7330 Health Services (Medical, Dental, Nurse, Act 25)					88,388.46
7340 State Property Tax Reduction Allocation					2,051,094.29
7505 Ready to Learn Block Grant					252,829.00
7820 State Share of Retirement Contributions					7,668,782.96
7000 Total Revenue from State Sources					\$24,093,320.83
8000 Revenue from Federal Sources					
8514 NCLB, Title I - Improving the Academic Achievement of the Disadvantaged					252,576.17
8515 NCLB, Title II - Preparing, Training and Recruiting High Quality Teachers and Principals					92,279.00
8517 NCLB, Title IV - 21st Century Schools					18,240.59
8749 Other CARES Act Funding					149,799.54
8810 School-Based Access Medicaid Reimbursement Program (SBAP) Reimbursements (Access)					150,000.00
8820 Medical Assistance Reimbursement for Administrative Claiming (Quarterly) Program					13,613.87
8000 Total Revenue from Federal Sources					\$676,509.17
9000 Other Financing Sources					
9110 Face Value of Bonds Issued		8,495,000.00			8,495,000.00
9120 Proceeds from Refunding of Bonds		7,495,000.00			7,495,000.00
9130 Bond Premiums		1,237,211.00			1,237,211.00
9990 Insurance Recoveries					12,440.18
9000 Total Other Financing Sources		\$17,227,211.00			\$17,239,651.18
Total From All Sources		\$17,297,559.21			\$128,913,303.70

LEA : 123465303 Methacton SD

Printed 10/14/2020 2:00:21 PM

	<u>General Fund (10)</u>	<u>Student Sponsored Activity Fund (21)</u>	<u>Public Purpose Trust (27)</u>	<u>Other Compt Approved (28)</u>	<u>Athletic / Activity (29)</u>	<u>Capital Reserve (690. 1850) (31)</u>
Revenue from Local Sources	86,833,474.31					
Revenue from State Sources	24,093,320.83					
Revenue from Federal Sources	676,509.17					
Other Financing Sources	12,440.18					
Total From All Sources	\$111,615,744.49					

LEA : 123465303 Methacton SD

Printed 10/14/2020 2:00:21 PM

	<u>Capital Reserve (1431)</u> <u>(32)</u>	<u>Other Capital Projects</u> <u>Fund (39)</u>	<u>Debt Service (40)</u>	<u>Permanent (90)</u>	<u>Total</u>
Revenue from Local Sources		70,348.21			86,903,822.52
Revenue from State Sources					24,093,320.83
Revenue from Federal Sources					676,509.17
Other Financing Sources		17,227,211.00			17,239,651.18
Total From All Sources		\$17,297,559.21			\$128,913,303.70

LEA : 123465303 Methacton SD

Printed 10/14/2020 2:00:28 PM

General Fund (10)

1000 Instruction		Total
100 Personnel Services – Salaries		
100 Personnel Services – Salaries		31,124,937.30
Total Personnel Services – Salaries		\$31,124,937.30
200 Personnel Services – Employee Benefits		
210 Group Insurance – Contracted Provider		43,426.59
220 Social Security Contributions		2,247,953.19
230 PSERS Retirement Contributions		10,660,103.03
250 Unemployment Compensation		42,636.31
260 Workers' Compensation		118,341.84
270 Group Insurance – Self-Insurance		7,016,926.99
299 All Other Employee Benefits		4,125.00
Total Personnel Services – Employee Benefits		\$20,133,512.95
300 Purchased Professional and Technical Services		
322 Professional Educational Services – Ius		1,194,383.13
329 Professional Educational Services – Other		1,735,459.11
330 Other Professional Services		1,443,750.93
340 Technical Services		16,500.52
Total Purchased Professional and Technical Services		\$4,390,093.69
400 Purchased Property Services		
430 Repairs and Maintenance Services		25,377.73
440 Rentals		697,069.05
Total Purchased Property Services		\$722,446.78
500 Other Purchased Services		
510 Student Transportation Services		281.66
530 Communications		185.96
550 Printing and Binding		12,284.49
561 Tuition To Other School Districts Within the State		17,823.07
562 Tuition To Pennsylvania Charter Schools		1,267,618.24
564 Tuition To Career and Technology Centers		1,358,279.56
567 Tuition To Approved Private Schools (APS) and PA Chartered Schools for the Deaf and Blind		532,683.86
568 Tuition To Private Residential Rehabilitative Institutions (PRRI) [In-State] and Detention Centers		274,406.92
569 Tuition – Other		250,702.42
580 Travel		2,246.98
Total Other Purchased Services		\$3,716,513.16
600 Supplies		
610 General Supplies		415,485.52
620 Energy		844.98
630 Food		899.64
640 Books and Periodicals		294,080.95
650 Supplies & Fees – Technology Related		525,647.31
Total Supplies		\$1,236,958.40
700 Property		
752 Capital Equipment – Original and Additional		5,590.00

LEA : 123465303 Methacton SD

Printed 10/14/2020 2:00:28 PM

General Fund (10)	
1000 Instruction	<u>Total</u>
700 <u>Property</u>	
756 Capitalized Technology Equipment – Original	1,038.80
Total Property	\$6,628.80
800 <u>Other Objects</u>	
810 Dues and Fees	3,208.60
820 Claims and Judgments Against the LEA	431,743.00
Total Other Objects	\$434,951.60
Total 1000 Instruction	\$61,766,042.68

LEA : 123465303 Methacton SD

Printed 10/14/2020 2:00:28 PM

General Fund (10)

1100 Regular Programs – Elementary / Secondary	Elementary	Secondary	Federal	Total
100 <u>Personnel Services – Salaries</u>				
100 Personnel Services – Salaries	12,378,392.29	10,687,161.18	188,340.55	23,253,894.02
Total Personnel Services – Salaries	\$12,378,392.29	\$10,687,161.18	\$188,340.55	\$23,253,894.02
200 <u>Personnel Services – Employee Benefits</u>				
210 Group Insurance – Contracted Provider	16,140.25	14,615.12	96.20	30,851.57
220 Social Security Contributions	894,844.43	775,794.75	13,624.04	1,684,263.22
230 PSERS Retirement Contributions	4,247,713.95	3,668,711.61	63,831.25	7,980,256.81
250 Unemployment Compensation	22,170.88	20,465.43		42,636.31
260 Workers' Compensation	46,436.18	42,864.17		89,300.35
270 Group Insurance – Self-Insurance	2,702,399.35	2,035,828.32	54,042.90	4,792,270.57
299 All Other Employee Benefits	4,125.00			4,125.00
Total Personnel Services – Employee Benefits	\$7,933,830.04	\$6,558,279.40	\$131,594.39	\$14,623,703.83
300 <u>Purchased Professional and Technical Services</u>				
322 Professional Educational Services – Ius	149,439.47	219,032.43		368,471.90
329 Professional Educational Services – Other	532,456.79	532,703.63		1,065,160.42
Total Purchased Professional and Technical Services	\$681,896.26	\$751,736.06		\$1,433,632.32
400 <u>Purchased Property Services</u>				
430 Repairs and Maintenance Services	9,136.73	16,064.79		25,201.52
440 Rentals	696,924.05			696,924.05
Total Purchased Property Services	\$706,060.78	\$16,064.79		\$722,125.57
500 <u>Other Purchased Services</u>				
510 Student Transportation Services	146.46	135.20		281.66
530 Communications		184.66		184.66
550 Printing and Binding	1,762.99			1,762.99
561 Tuition To Other School Districts Within the State		956.02		956.02
562 Tuition To Pennsylvania Charter Schools	497,335.07	459,078.52		956,413.59
568 Tuition To Private Residential Rehabilitative Institutions (PRRI) [In-State] and Detention Centers		5,946.33		5,946.33
580 Travel	163.00	2,296.54		2,459.54
Total Other Purchased Services	\$499,407.52	\$468,597.27		\$968,004.79
600 <u>Supplies</u>				
610 General Supplies	183,663.67	199,160.08		382,823.75
630 Food	272.62	195.00		467.62
640 Books and Periodicals	113,848.33	173,651.55		287,499.88
650 Supplies & Fees – Technology Related	192,398.84	328,481.68		520,880.52
Total Supplies	\$490,183.46	\$701,488.31		\$1,191,671.77
700 <u>Property</u>				
752 Capital Equipment – Original and Additional		5,590.00		5,590.00
Total Property		\$5,590.00		\$5,590.00
800 <u>Other Objects</u>				
810 Dues and Fees		3,122.60		3,122.60
Total Other Objects		\$3,122.60		\$3,122.60
Total 1100 Regular Programs – Elementary / Secondary	\$22,689,770.35	\$19,192,039.61	\$319,934.94	\$42,201,744.90

LEA : 123465303 Methacton SD

Printed 10/14/2020 2:00:28 PM

General Fund (10)

1110 Regular Programs

	Elementary	Secondary	Federal	Total
100 <u>Personnel Services – Salaries</u>				
100 Personnel Services – Salaries	12,378,392.29	10,687,161.18	23,172.80	23,088,726.27
Total Personnel Services – Salaries	\$12,378,392.29	\$10,687,161.18	\$23,172.80	\$23,088,726.27
200 <u>Personnel Services – Employee Benefits</u>				
210 Group Insurance – Contracted Provider	16,140.25	14,615.12		30,755.37
220 Social Security Contributions	894,844.43	775,794.75	1,475.17	1,672,114.35
230 PSERS Retirement Contributions	4,247,713.95	3,668,711.61	7,946.00	7,924,371.56
250 Unemployment Compensation	22,170.88	20,465.43		42,636.31
260 Workers' Compensation	46,436.18	42,864.17		89,300.35
270 Group Insurance – Self-Insurance	2,702,399.35	2,035,828.32	21,658.80	4,759,886.47
299 All Other Employee Benefits	4,125.00			4,125.00
Total Personnel Services – Employee Benefits	\$7,933,830.04	\$6,558,279.40	\$31,079.97	\$14,523,189.41
300 <u>Purchased Professional and Technical Services</u>				
322 Professional Educational Services – Ius	149,439.47	219,032.43		368,471.90
329 Professional Educational Services – Other	532,456.79	532,703.63		1,065,160.42
Total Purchased Professional and Technical Services	\$681,896.26	\$751,736.06		\$1,433,632.32
400 <u>Purchased Property Services</u>				
430 Repairs and Maintenance Services	9,136.73	16,064.79		25,201.52
440 Rentals	696,924.05			696,924.05
Total Purchased Property Services	\$706,060.78	\$16,064.79		\$722,125.57
500 <u>Other Purchased Services</u>				
510 Student Transportation Services	146.46	135.20		281.66
530 Communications		184.66		184.66
550 Printing and Binding	1,762.99			1,762.99
561 Tuition To Other School Districts Within the State		956.02		956.02
562 Tuition To Pennsylvania Charter Schools	497,335.07	459,078.52		956,413.59
568 Tuition To Private Residential Rehabilitative Institutions (PRRI) [In-State] and Detention Centers		5,946.33		5,946.33
580 Travel	163.00	2,296.54		2,459.54
Total Other Purchased Services	\$499,407.52	\$468,597.27		\$968,004.79
600 <u>Supplies</u>				
610 General Supplies	183,663.67	199,160.08		382,823.75
630 Food	272.62	195.00		467.62
640 Books and Periodicals	113,848.33	173,651.55		287,499.88
650 Supplies & Fees – Technology Related	192,398.84	328,481.68		520,880.52
Total Supplies	\$490,183.46	\$701,488.31		\$1,191,671.77
700 <u>Property</u>				
752 Capital Equipment – Original and Additional		5,590.00		5,590.00
Total Property		\$5,590.00		\$5,590.00
800 <u>Other Objects</u>				
810 Dues and Fees		3,122.60		3,122.60
Total Other Objects		\$3,122.60		\$3,122.60
Total 1110 Regular Programs	\$22,689,770.35	\$19,192,039.61	\$54,252.77	\$41,936,062.73

LEA : 123465303 Methacton SD

Printed 10/14/2020 2:00:28 PM

General Fund (10)

1190 Federally-Funded Regular Programs	<u>Elementary</u>	<u>Secondary</u>	<u>Federal</u>	<u>Total</u>
100 <u>Personnel Services – Salaries</u>				
100 Personnel Services – Salaries			165,167.75	165,167.75
Total Personnel Services – Salaries			\$165,167.75	\$165,167.75
200 <u>Personnel Services – Employee Benefits</u>				
210 Group Insurance – Contracted Provider			96.20	96.20
220 Social Security Contributions			12,148.87	12,148.87
230 PSERS Retirement Contributions			55,885.25	55,885.25
270 Group Insurance – Self-Insurance			32,384.10	32,384.10
Total Personnel Services – Employee Benefits			\$100,514.42	\$100,514.42
Total 1190 Federally-Funded Regular Programs			\$265,682.17	\$265,682.17

LEA : 123465303 Methacton SD

Printed 10/14/2020 2:00:28 PM

General Fund (10)

1200 Special Programs – Elementary / Secondary	Elementary	Secondary	Federal	Total
100 Personnel Services – Salaries				
100 Personnel Services – Salaries	3,562,112.96	2,696,273.70	721,414.92	6,979,801.58
Total Personnel Services – Salaries	\$3,562,112.96	\$2,696,273.70	\$721,414.92	\$6,979,801.58
200 Personnel Services – Employee Benefits				
210 Group Insurance – Contracted Provider	6,245.86	5,294.36		11,540.22
220 Social Security Contributions	282,769.10	216,380.25		499,149.35
230 PSERS Retirement Contributions	1,349,928.04	1,032,873.23		2,382,801.27
260 Workers' Compensation	13,609.28	12,562.41		26,171.69
270 Group Insurance – Self-Insurance	1,200,393.49	887,724.22	9,357.36	2,097,475.07
Total Personnel Services – Employee Benefits	\$2,852,945.77	\$2,154,834.47	\$9,357.36	\$5,017,137.60
300 Purchased Professional and Technical Services				
322 Professional Educational Services – lus	250,907.10	571,504.13		822,411.23
329 Professional Educational Services – Other	319,534.01	350,764.68		670,298.69
330 Other Professional Services	673,770.50	689,036.39	14,997.96	1,377,804.85
340 Technical Services	8,580.27	7,920.25		16,500.52
Total Purchased Professional and Technical Services	\$1,252,791.88	\$1,619,225.45	\$14,997.96	\$2,887,015.29
500 Other Purchased Services				
530 Communications		1.30		1.30
561 Tuition To Other School Districts Within the State		16,867.05		16,867.05
562 Tuition To Pennsylvania Charter Schools	161,826.42	149,378.23		311,204.65
567 Tuition To Approved Private Schools (APS) and PA Chartered Schools for the Deaf and Blind	255,394.44	277,289.42		532,683.86
568 Tuition To Private Residential Rehabilitative Institutions (PRRI) [In-State] and Detention Centers		263,902.59		263,902.59
569 Tuition – Other		250,702.42		250,702.42
580 Travel	65.00	125.00		190.00
Total Other Purchased Services	\$417,285.86	\$958,266.01		\$1,375,551.87
600 Supplies				
610 General Supplies	10,331.96	10,180.96		20,512.92
630 Food	22.18	409.84		432.02
640 Books and Periodicals	1,843.26	4,737.81		6,581.07
650 Supplies & Fees – Technology Related	845.00	1,086.79	2,835.00	4,766.79
Total Supplies	\$13,042.40	\$16,415.40	\$2,835.00	\$32,292.80
800 Other Objects				
820 Claims and Judgments Against the LEA	165,395.00	266,348.00		431,743.00
Total Other Objects	\$165,395.00	\$266,348.00		\$431,743.00
Total 1200 Special Programs – Elementary / Secondary	\$8,263,573.87	\$7,711,363.03	\$748,605.24	\$16,723,542.14

LEA : 123465303 Methacton SD

Printed 10/14/2020 2:00:28 PM

General Fund (10)

1210 Life Skills Support

	Elementary	Secondary	Federal	Total
100 <u>Personnel Services – Salaries</u>				
100 Personnel Services – Salaries	300.00	269,107.86	55,801.00	325,208.86
Total Personnel Services – Salaries	\$300.00	\$269,107.86	\$55,801.00	\$325,208.86
200 <u>Personnel Services – Employee Benefits</u>				
210 Group Insurance – Contracted Provider	67.92	235.68		303.60
220 Social Security Contributions	3,925.28	19,129.80		23,055.08
230 PSERS Retirement Contributions	19,237.12	91,815.99		111,053.11
270 Group Insurance – Self-Insurance	23,755.44	75,870.86		99,626.30
Total Personnel Services – Employee Benefits	\$46,985.76	\$187,052.33		\$234,038.09
300 <u>Purchased Professional and Technical Services</u>				
322 Professional Educational Services – Ius	1,043.75	63,675.89		64,719.64
329 Professional Educational Services – Other	4,588.75	65,071.25		69,660.00
330 Other Professional Services		1,655.00		1,655.00
Total Purchased Professional and Technical Services	\$5,632.50	\$130,402.14		\$136,034.64
500 <u>Other Purchased Services</u>				
580 Travel		125.00		125.00
Total Other Purchased Services		\$125.00		\$125.00
600 <u>Supplies</u>				
610 General Supplies	44.94	43.86		88.80
650 Supplies & Fees – Technology Related		372.84		372.84
Total Supplies	\$44.94	\$416.70		\$461.64
Total 1210 Life Skills Support	\$52,963.20	\$587,104.03	\$55,801.00	\$695,868.23

LEA : 123465303 Methacton SD

Printed 10/14/2020 2:00:28 PM

General Fund (10)

1220 Sensory Support	Elementary	Secondary	Federal	Total
100 <u>Personnel Services – Salaries</u>				
100 Personnel Services – Salaries	351,348.56	147,219.32		498,567.88
Total Personnel Services – Salaries	\$351,348.56	\$147,219.32		\$498,567.88
200 <u>Personnel Services – Employee Benefits</u>				
210 Group Insurance – Contracted Provider	283.04	101.88		384.92
220 Social Security Contributions	25,879.17	10,776.00		36,655.17
230 PSERS Retirement Contributions	120,446.08	50,481.58		170,927.66
270 Group Insurance – Self-Insurance	67,370.36	27,596.04		94,966.40
Total Personnel Services – Employee Benefits	\$213,978.65	\$88,955.50		\$302,934.15
300 <u>Purchased Professional and Technical Services</u>				
322 Professional Educational Services – Ius	134,409.30	112,645.12		247,054.42
330 Other Professional Services	41,342.01	61,140.31		102,482.32
Total Purchased Professional and Technical Services	\$175,751.31	\$173,785.43		\$349,536.74
600 <u>Supplies</u>				
610 General Supplies	445.50	3,147.14		3,592.64
650 Supplies & Fees – Technology Related	845.00			845.00
Total Supplies	\$1,290.50	\$3,147.14		\$4,437.64
Total 1220 Sensory Support	\$742,369.02	\$413,107.39		\$1,155,476.41

LEA : 123465303 Methacton SD

Printed 10/14/2020 2:00:28 PM

General Fund (10)

1230 Emotional Support	Elementary	Secondary	Federal	Total
100 <u>Personnel Services – Salaries</u>				
100 Personnel Services – Salaries	739,373.97	612,002.70	266,562.00	1,617,938.67
Total Personnel Services – Salaries	\$739,373.97	\$612,002.70	\$266,562.00	\$1,617,938.67
200 <u>Personnel Services – Employee Benefits</u>				
210 Group Insurance – Contracted Provider	949.36	586.08		1,535.44
220 Social Security Contributions	65,881.16	50,067.76		115,948.92
230 PSERS Retirement Contributions	315,019.22	237,665.08		552,684.30
270 Group Insurance – Self-Insurance	265,098.14	210,689.92	9,357.36	485,145.42
Total Personnel Services – Employee Benefits	\$646,947.88	\$499,008.84	\$9,357.36	\$1,155,314.08
300 <u>Purchased Professional and Technical Services</u>				
322 Professional Educational Services – Ius	59,766.08	329,730.10		389,496.18
329 Professional Educational Services – Other	86,433.00	125,381.65		211,814.65
330 Other Professional Services	613,878.00	473,526.78		1,087,404.78
Total Purchased Professional and Technical Services	\$760,077.08	\$928,638.53		\$1,688,715.61
500 <u>Other Purchased Services</u>				
530 Communications		1.30		1.30
561 Tuition To Other School Districts Within the State		10,815.55		10,815.55
567 Tuition To Approved Private Schools (APS) and PA Chartered Schools for the Deaf and Blind		120,549.25		120,549.25
568 Tuition To Private Residential Rehabilitative Institutions (PRRI) [In-State] and Detention Centers		198,585.57		198,585.57
569 Tuition – Other		250,702.42		250,702.42
580 Travel	65.00			65.00
Total Other Purchased Services	\$65.00	\$580,654.09		\$580,719.09
600 <u>Supplies</u>				
610 General Supplies	1,838.16	2,522.19		4,360.35
640 Books and Periodicals		4,019.63		4,019.63
650 Supplies & Fees – Technology Related		658.95		658.95
Total Supplies	\$1,838.16	\$7,200.77		\$9,038.93
800 <u>Other Objects</u>				
820 Claims and Judgments Against the LEA	73,085.00	97,010.10		170,095.10
Total Other Objects	\$73,085.00	\$97,010.10		\$170,095.10
Total 1230 Emotional Support	\$2,221,387.09	\$2,724,515.03	\$275,919.36	\$5,221,821.48

LEA : 123465303 Methacton SD

Printed 10/14/2020 2:00:28 PM

General Fund (10)

1240 Academic Support

	Elementary	Secondary	Federal	Total
100 <u>Personnel Services – Salaries</u>				
100 Personnel Services – Salaries	1,902,667.94	1,202,655.98	286,045.92	3,391,369.84
Total Personnel Services – Salaries	\$1,902,667.94	\$1,202,655.98	\$286,045.92	\$3,391,369.84
200 <u>Personnel Services – Employee Benefits</u>				
210 Group Insurance – Contracted Provider	4,274.46	3,673.46		7,947.92
220 Social Security Contributions	147,278.36	95,874.35		243,152.71
230 PSERS Retirement Contributions	704,776.01	451,776.25		1,156,552.26
260 Workers' Compensation	13,609.28	12,562.41		26,171.69
270 Group Insurance – Self-Insurance	621,049.29	337,182.37		958,231.66
Total Personnel Services – Employee Benefits	\$1,490,987.40	\$901,068.84		\$2,392,056.24
300 <u>Purchased Professional and Technical Services</u>				
322 Professional Educational Services – lus		65,453.02		65,453.02
329 Professional Educational Services – Other	212,209.94	156,968.10		369,178.04
330 Other Professional Services	18,550.49	152,714.30		171,264.79
Total Purchased Professional and Technical Services	\$230,760.43	\$375,135.42		\$605,895.85
500 <u>Other Purchased Services</u>				
561 Tuition To Other School Districts Within the State		6,051.50		6,051.50
562 Tuition To Pennsylvania Charter Schools	161,826.42	149,378.23		311,204.65
568 Tuition To Private Residential Rehabilitative Institutions (PRRI) [In-State] and Detention Centers		65,317.02		65,317.02
Total Other Purchased Services	\$161,826.42	\$220,746.75		\$382,573.17
600 <u>Supplies</u>				
610 General Supplies	8,003.36	2,926.14		10,929.50
630 Food	22.18	409.84		432.02
640 Books and Periodicals	1,843.26	718.18		2,561.44
650 Supplies & Fees – Technology Related		55.00		55.00
Total Supplies	\$9,868.80	\$4,109.16		\$13,977.96
800 <u>Other Objects</u>				
820 Claims and Judgments Against the LEA	92,310.00	169,337.90		261,647.90
Total Other Objects	\$92,310.00	\$169,337.90		\$261,647.90
Total 1240 Academic Support	\$3,888,420.99	\$2,873,054.05	\$286,045.92	\$7,047,520.96

LEA : 123465303 Methacton SD

Printed 10/14/2020 2:00:28 PM

General Fund (10)

1241 Learning Support – Public	Elementary	Secondary	Federal	Total
100 <u>Personnel Services – Salaries</u>				
100 Personnel Services – Salaries	1,534,263.78	831,052.74	286,045.92	2,651,362.44
Total Personnel Services – Salaries	\$1,534,263.78	\$831,052.74	\$286,045.92	\$2,651,362.44
200 <u>Personnel Services – Employee Benefits</u>				
210 Group Insurance – Contracted Provider	4,070.70	3,480.50		7,551.20
220 Social Security Contributions	121,206.25	68,215.59		189,421.84
230 PSERS Retirement Contributions	578,827.65	325,166.44		903,994.09
260 Workers' Compensation	13,609.28	12,562.41		26,171.69
270 Group Insurance – Self-Insurance	549,368.49	291,861.97		841,230.46
Total Personnel Services – Employee Benefits	\$1,267,082.37	\$701,286.91		\$1,968,369.28
300 <u>Purchased Professional and Technical Services</u>				
322 Professional Educational Services – lus		65,453.02		65,453.02
329 Professional Educational Services – Other	212,209.94	156,968.10		369,178.04
330 Other Professional Services	15,437.50	152,714.30		168,151.80
Total Purchased Professional and Technical Services	\$227,647.44	\$375,135.42		\$602,782.86
500 <u>Other Purchased Services</u>				
561 Tuition To Other School Districts Within the State		6,051.50		6,051.50
562 Tuition To Pennsylvania Charter Schools	161,826.42	149,378.23		311,204.65
568 Tuition To Private Residential Rehabilitative Institutions (PRRI) [In-State] and Detention Centers		65,317.02		65,317.02
Total Other Purchased Services	\$161,826.42	\$220,746.75		\$382,573.17
600 <u>Supplies</u>				
610 General Supplies	4,041.10	2,491.00		6,532.10
630 Food		389.36		389.36
640 Books and Periodicals	1,661.89	478.18		2,140.07
650 Supplies & Fees – Technology Related		55.00		55.00
Total Supplies	\$5,702.99	\$3,413.54		\$9,116.53
800 <u>Other Objects</u>				
820 Claims and Judgments Against the LEA	92,310.00	169,337.90		261,647.90
Total Other Objects	\$92,310.00	\$169,337.90		\$261,647.90
Total 1241 Learning Support – Public	\$3,288,833.00	\$2,300,973.26	\$286,045.92	\$5,875,852.18

LEA : 123465303 Methacton SD

Printed 10/14/2020 2:00:28 PM

General Fund (10)				
1243 Gifted Support	<u>Elementary</u>	<u>Secondary</u>	<u>Federal</u>	<u>Total</u>
100 <u>Personnel Services – Salaries</u>				
100 Personnel Services – Salaries	368,404.16	371,603.24		740,007.40
Total Personnel Services – Salaries	\$368,404.16	\$371,603.24		\$740,007.40
200 <u>Personnel Services – Employee Benefits</u>				
210 Group Insurance – Contracted Provider	203.76	192.96		396.72
220 Social Security Contributions	26,072.11	27,658.76		53,730.87
230 PSERS Retirement Contributions	125,948.36	126,609.81		252,558.17
270 Group Insurance – Self-Insurance	71,680.80	45,320.40		117,001.20
Total Personnel Services – Employee Benefits	\$223,905.03	\$199,781.93		\$423,686.96
300 <u>Purchased Professional and Technical Services</u>				
330 Other Professional Services	3,112.99			3,112.99
Total Purchased Professional and Technical Services	\$3,112.99			\$3,112.99
600 <u>Supplies</u>				
610 General Supplies	3,962.26	435.14		4,397.40
630 Food	22.18	20.48		42.66
640 Books and Periodicals	181.37	240.00		421.37
Total Supplies	\$4,165.81	\$695.62		\$4,861.43
Total 1243 Gifted Support	\$599,587.99	\$572,080.79		\$1,171,668.78

LEA : 123465303 Methacton SD

Printed 10/14/2020 2:00:28 PM

General Fund (10)

1260 Physical Support

	<u>Elementary</u>	<u>Secondary</u>	<u>Federal</u>	<u>Total</u>
300 <u>Purchased Professional and Technical Services</u>				
330 Other Professional Services			14,997.96	14,997.96
Total Purchased Professional and Technical Services			\$14,997.96	\$14,997.96
Total 1260 Physical Support			\$14,997.96	\$14,997.96

LEA : 123465303 Methacton SD

Printed 10/14/2020 2:00:28 PM

General Fund (10)				
1270 Multi-Handicapped Support	<u>Elementary</u>	<u>Secondary</u>	<u>Federal</u>	<u>Total</u>
300 <u>Purchased Professional and Technical Services</u>				
329 Professional Educational Services – Other	12,680.00			12,680.00
Total Purchased Professional and Technical Services	\$12,680.00			\$12,680.00
500 <u>Other Purchased Services</u>				
567 Tuition To Approved Private Schools (APS) and PA Chartered Schools for the Deaf and Blind	106,554.00	11,000.00		117,554.00
Total Other Purchased Services	\$106,554.00	\$11,000.00		\$117,554.00
600 <u>Supplies</u>				
610 General Supplies		1,541.63		1,541.63
Total Supplies		\$1,541.63		\$1,541.63
Total 1270 Multi-Handicapped Support	\$119,234.00	\$12,541.63		\$131,775.63

LEA : 123465303 Methacton SD

Printed 10/14/2020 2:00:28 PM

General Fund (10)

1280 Early Intervention Support	<u>Elementary</u>	<u>Secondary</u>	<u>Federal</u>	<u>Total</u>
300 <u>Purchased Professional and Technical Services</u>				
322 Professional Educational Services – lus	55,687.97			55,687.97
Total Purchased Professional and Technical Services	\$55,687.97			\$55,687.97
600 <u>Supplies</u>				
650 Supplies & Fees – Technology Related			2,835.00	2,835.00
Total Supplies			\$2,835.00	\$2,835.00
Total 1280 Early Intervention Support	\$55,687.97		\$2,835.00	\$58,522.97

LEA : 123465303 Methacton SD

Printed 10/14/2020 2:00:28 PM

General Fund (10)

1290 Special Programs - Other Support	Elementary	Secondary	Federal	Total
100 <u>Personnel Services – Salaries</u>				
100 Personnel Services – Salaries	568,422.49	465,287.84	113,006.00	1,146,716.33
Total Personnel Services – Salaries	\$568,422.49	\$465,287.84	\$113,006.00	\$1,146,716.33
200 <u>Personnel Services – Employee Benefits</u>				
210 Group Insurance – Contracted Provider	671.08	697.26		1,368.34
220 Social Security Contributions	39,805.13	40,532.34		80,337.47
230 PSERS Retirement Contributions	190,449.61	201,134.33		391,583.94
270 Group Insurance – Self-Insurance	223,120.26	236,385.03		459,505.29
Total Personnel Services – Employee Benefits	\$454,046.08	\$478,748.96		\$932,795.04
300 <u>Purchased Professional and Technical Services</u>				
329 Professional Educational Services – Other	3,622.32	3,343.68		6,966.00
340 Technical Services	8,580.27	7,920.25		16,500.52
Total Purchased Professional and Technical Services	\$12,202.59	\$11,263.93		\$23,466.52
500 <u>Other Purchased Services</u>				
567 Tuition To Approved Private Schools (APS) and PA Chartered Schools for the Deaf and Blind	148,840.44	145,740.17		294,580.61
Total Other Purchased Services	\$148,840.44	\$145,740.17		\$294,580.61
Total 1290 Special Programs - Other Support	\$1,183,511.60	\$1,101,040.90	\$113,006.00	\$2,397,558.50

LEA : 123465303 Methacton SD

Printed 10/14/2020 2:00:28 PM

General Fund (10)

1300 Vocational Education

	Elementary	Secondary	Federal	Total
100 Personnel Services – Salaries				
100 Personnel Services – Salaries		746,238.07		746,238.07
Total Personnel Services – Salaries		\$746,238.07		\$746,238.07
200 Personnel Services – Employee Benefits				
210 Group Insurance – Contracted Provider		865.26		865.26
220 Social Security Contributions		53,843.94		53,843.94
230 PSERS Retirement Contributions		250,046.55		250,046.55
260 Workers' Compensation		2,869.80		2,869.80
270 Group Insurance – Self-Insurance		103,425.91		103,425.91
Total Personnel Services – Employee Benefits		\$411,051.46		\$411,051.46
500 Other Purchased Services				
564 Tuition To Career and Technology Centers		1,358,279.56		1,358,279.56
580 Travel		(402.56)		(402.56)
Total Other Purchased Services		\$1,357,877.00		\$1,357,877.00
600 Supplies				
610 General Supplies		10,464.07		10,464.07
Total Supplies		\$10,464.07		\$10,464.07
700 Property				
756 Capitalized Technology Equipment – Original		1,038.80		1,038.80
Total Property		\$1,038.80		\$1,038.80
Total 1300 Vocational Education		\$2,526,669.40		\$2,526,669.40

LEA : 123465303 Methacton SD

Printed 10/14/2020 2:00:28 PM

General Fund (10)

1400 Other Instructional Programs – Elementary / Secondary	<u>Elementary</u>	<u>Secondary</u>	<u>Federal</u>	<u>Total</u>
100 <u>Personnel Services – Salaries</u>				
100 Personnel Services – Salaries		137,340.13		137,340.13
Total Personnel Services – Salaries		\$137,340.13		\$137,340.13
200 <u>Personnel Services – Employee Benefits</u>				
210 Group Insurance – Contracted Provider		169.54		169.54
220 Social Security Contributions		10,135.10		10,135.10
230 PSERS Retirement Contributions		46,713.10		46,713.10
270 Group Insurance – Self-Insurance		23,755.44		23,755.44
Total Personnel Services – Employee Benefits		\$80,773.18		\$80,773.18
400 <u>Purchased Property Services</u>				
430 Repairs and Maintenance Services		176.21		176.21
Total Purchased Property Services		\$176.21		\$176.21
500 <u>Other Purchased Services</u>				
568 Tuition To Private Residential Rehabilitative Institutions (PRRI) [In-State] and Detention Centers		4,558.00		4,558.00
Total Other Purchased Services		\$4,558.00		\$4,558.00
600 <u>Supplies</u>				
620 Energy		844.98		844.98
Total Supplies		\$844.98		\$844.98
800 <u>Other Objects</u>				
810 Dues and Fees		86.00		86.00
Total Other Objects		\$86.00		\$86.00
Total 1400 Other Instructional Programs – Elementary / Secondary		\$223,778.50		\$223,778.50

LEA : 123465303 Methacton SD

Printed 10/14/2020 2:00:28 PM

General Fund (10)

1410 Drivers' Education	<u>Elementary</u>	<u>Secondary</u>	<u>Federal</u>	<u>Total</u>
100 <u>Personnel Services – Salaries</u>				
100 Personnel Services – Salaries		130,512.25		130,512.25
Total Personnel Services – Salaries		\$130,512.25		\$130,512.25
200 <u>Personnel Services – Employee Benefits</u>				
210 Group Insurance – Contracted Provider		169.54		169.54
220 Social Security Contributions		9,621.68		9,621.68
230 PSERS Retirement Contributions		44,371.83		44,371.83
270 Group Insurance – Self-Insurance		23,755.44		23,755.44
Total Personnel Services – Employee Benefits		\$77,918.49		\$77,918.49
400 <u>Purchased Property Services</u>				
430 Repairs and Maintenance Services		176.21		176.21
Total Purchased Property Services		\$176.21		\$176.21
600 <u>Supplies</u>				
620 Energy		844.98		844.98
Total Supplies		\$844.98		\$844.98
800 <u>Other Objects</u>				
810 Dues and Fees		86.00		86.00
Total Other Objects		\$86.00		\$86.00
Total 1410 Drivers' Education		\$209,537.93		\$209,537.93

LEA : 123465303 Methacton SD

Printed 10/14/2020 2:00:28 PM

General Fund (10)

1420 Summer School

	Elementary	Secondary	Federal	Total
100 Personnel Services – Salaries				
100 Personnel Services – Salaries		6,497.88		6,497.88
Total Personnel Services – Salaries		\$6,497.88		\$6,497.88
200 Personnel Services – Employee Benefits				
220 Social Security Contributions		489.91		489.91
230 PSERS Retirement Contributions		2,228.12		2,228.12
Total Personnel Services – Employee Benefits		\$2,718.03		\$2,718.03
Total 1420 Summer School		\$9,215.91		\$9,215.91

LEA : 123465303 Methacton SD

Printed 10/14/2020 2:00:28 PM

General Fund (10)

1430 Homebound Instruction	<u>Elementary</u>	<u>Secondary</u>	<u>Federal</u>	<u>Total</u>
100 <u>Personnel Services – Salaries</u>				
100 Personnel Services – Salaries		330.00		330.00
Total Personnel Services – Salaries		\$330.00		\$330.00
200 <u>Personnel Services – Employee Benefits</u>				
220 Social Security Contributions		23.51		23.51
230 PSERS Retirement Contributions		113.15		113.15
Total Personnel Services – Employee Benefits		\$136.66		\$136.66
Total 1430 Homebound Instruction		\$466.66		\$466.66

LEA : 123465303 Methacton SD

Printed 10/14/2020 2:00:28 PM

General Fund (10)

1440 Alternative Regular Education Programs	<u>Elementary</u>	<u>Secondary</u>	<u>Federal</u>	<u>Total</u>
500 <u>Other Purchased Services</u>				
568 Tuition To Private Residential Rehabilitative Institutions (PRRI) [In-State] and Detention Centers		4,558.00		4,558.00
Total Other Purchased Services		\$4,558.00		\$4,558.00
Total 1440 Alternative Regular Education Programs		\$4,558.00		\$4,558.00

LEA : 123465303 Methacton SD

Printed 10/14/2020 2:00:28 PM

General Fund (10)

1441 Adjudicated / Court-Placed Programs	<u>Elementary</u>	<u>Secondary</u>	<u>Federal</u>	<u>Total</u>
500 <u>Other Purchased Services</u>				
568 Tuition To Private Residential Rehabilitative Institutions (PRRI) [In-State] and Detention Centers		4,558.00		4,558.00
Total Other Purchased Services		\$4,558.00		\$4,558.00
Total 1441 Adjudicated / Court-Placed Programs		\$4,558.00		\$4,558.00

LEA : 123465303 Methacton SD

Printed 10/14/2020 2:00:28 PM

General Fund (10)

1500 Nonpublic School Programs

	<u>Elementary</u>	<u>Secondary</u>	<u>Federal</u>	<u>Total</u>
300 <u>Purchased Professional and Technical Services</u>				
322 Professional Educational Services – lus			3,500.00	3,500.00
Total Purchased Professional and Technical Services			\$3,500.00	\$3,500.00
Total 1500 Nonpublic School Programs			\$3,500.00	\$3,500.00

LEA : 123465303 Methacton SD

Printed 10/14/2020 2:00:28 PM

General Fund (10)				
1600 Adult Education Programs	<u>Elementary</u>	<u>Secondary</u>	<u>Federal</u>	<u>Total</u>
100 <u>Personnel Services – Salaries</u>				
100 Personnel Services – Salaries				7,663.50
Total Personnel Services – Salaries				\$7,663.50
200 <u>Personnel Services – Employee Benefits</u>				
220 Social Security Contributions				561.58
230 PSERS Retirement Contributions				285.30
Total Personnel Services – Employee Benefits				\$846.88
300 <u>Purchased Professional and Technical Services</u>				
330 Other Professional Services				65,946.08
Total Purchased Professional and Technical Services				\$65,946.08
400 <u>Purchased Property Services</u>				
440 Rentals				145.00
Total Purchased Property Services				\$145.00
500 <u>Other Purchased Services</u>				
550 Printing and Binding				10,521.50
Total Other Purchased Services				\$10,521.50
600 <u>Supplies</u>				
610 General Supplies				1,684.78
Total Supplies				\$1,684.78
Total 1600 Adult Education Programs				\$86,807.74

LEA : 123465303 Methacton SD

Printed 10/14/2020 2:00:39 PM

General Fund (10)

2000 Support Services		<u>Total</u>
100 <u>Personnel Services – Salaries</u>		
100 Personnel Services – Salaries	13,454,821.86	
Total Personnel Services – Salaries	\$13,454,821.86	
200 <u>Personnel Services – Employee Benefits</u>		
210 Group Insurance – Contracted Provider	19,224.44	
220 Social Security Contributions	962,020.29	
230 PSERS Retirement Contributions	4,519,708.62	
240 Tuition Reimbursement	231,242.00	
260 Workers' Compensation	50,181.18	
270 Group Insurance – Self-Insurance	2,740,862.10	
299 All Other Employee Benefits	969.58	
Total Personnel Services – Employee Benefits	\$8,524,208.21	
300 <u>Purchased Professional and Technical Services</u>		
310 Official / Administrative Services	140,384.05	
330 Other Professional Services	2,130,492.40	
360 Employee Training and Development Services	134,430.40	
390 Other Purchased Professional and Technical Services	141,024.65	
Total Purchased Professional and Technical Services	\$2,546,331.50	
400 <u>Purchased Property Services</u>		
410 Cleaning Services	123,613.30	
420 Utility Services	145,638.75	
430 Repairs and Maintenance Services	1,086,429.76	
440 Rentals	163,572.52	
450 Construction Services	2,000.00	
460 Extermination Services	9,092.75	
490 Other Purchased Property Services	2,100.00	
Total Purchased Property Services	\$1,532,447.08	
500 <u>Other Purchased Services</u>		
513 Contracted Carriers	5,291,939.19	
516 Student Transportation Services From the IU	207,105.20	
519 Student Transportation Services From Other Sources	3,730.90	
520 Insurance – General	213,711.75	
530 Communications	140,465.52	
549 Other Advertising/Public Relations	5,171.27	
550 Printing and Binding	15,407.13	
580 Travel	17,059.12	
591 Services Purchased Locally	1,538.42	
595 IU Payments By Withholding	67,743.42	
Total Other Purchased Services	\$5,963,871.92	
600 <u>Supplies</u>		
610 General Supplies	672,076.76	
620 Energy	1,060,893.60	
630 Food	5,215.35	
640 Books and Periodicals	48,519.15	

LEA : 123465303 Methacton SD

Printed 10/14/2020 2:00:39 PM

General Fund (10)

2000 Support Services

Total

600 <u>Supplies</u>	
650 Supplies & Fees – Technology Related	490,948.57
Total Supplies	\$2,277,653.43
700 <u>Property</u>	
752 Capital Equipment – Original and Additional	211,580.09
756 Capitalized Technology Equipment – Original	18,645.98
762 Capitalized Equipment - Replacement	183,160.56
Total Property	\$413,386.63
800 <u>Other Objects</u>	
810 Dues and Fees	55,916.94
820 Claims and Judgments Against the LEA	11,734.00
890 Miscellaneous Expenditures	(5,507.13)
Total Other Objects	\$62,143.81
Total 2000 Support Services	\$34,774,864.44

LEA : 123465303 Methacton SD

Printed 10/14/2020 2:00:39 PM

General Fund (10)

2100 Support Services – Students	Elementary	Secondary	Federal	Total
100 <u>Personnel Services – Salaries</u>				
100 Personnel Services – Salaries	1,238,751.01	1,443,464.57		2,826,000.61
Total Personnel Services – Salaries	\$1,238,751.01	\$1,443,464.57		\$2,826,000.61
200 <u>Personnel Services – Employee Benefits</u>				
210 Group Insurance – Contracted Provider	2,176.26	2,300.20		4,680.22
220 Social Security Contributions	88,876.34	103,037.58		201,909.57
230 PSERS Retirement Contributions	417,929.98	487,689.34		954,923.07
260 Workers' Compensation	5,177.48	4,779.21		9,956.69
270 Group Insurance – Self-Insurance	243,384.47	337,475.76		646,792.67
Total Personnel Services – Employee Benefits	\$757,544.53	\$935,282.09		\$1,818,262.22
300 <u>Purchased Professional and Technical Services</u>				
330 Other Professional Services		282,651.40		747,791.40
Total Purchased Professional and Technical Services		\$282,651.40		\$747,791.40
500 <u>Other Purchased Services</u>				
530 Communications	7.46	6.89		14.35
580 Travel	1,198.11	1,090.74		2,563.85
Total Other Purchased Services	\$1,205.57	\$1,097.63		\$2,578.20
600 <u>Supplies</u>				
610 General Supplies	9,110.48	13,265.47		22,375.95
640 Books and Periodicals		637.41		637.41
Total Supplies	\$9,110.48	\$13,902.88		\$23,013.36
800 <u>Other Objects</u>				
810 Dues and Fees	171.60	287.40		529.00
890 Miscellaneous Expenditures		(6,407.13)	900.00	(5,507.13)
Total Other Objects	\$171.60	(\$6,119.73)	\$900.00	(\$4,978.13)
Total 2100 Support Services – Students	\$2,006,783.19	\$2,670,278.84	\$900.00	\$5,412,667.66

LEA : 123465303 Methacton SD

Printed 10/14/2020 2:00:39 PM

General Fund (10)

2110 Supervision of Student Services	Elementary	Secondary	Federal	Total
100 <u>Personnel Services – Salaries</u>				
100 Personnel Services – Salaries	384,380.85	354,813.09		739,193.94
Total Personnel Services – Salaries	\$384,380.85	\$354,813.09		\$739,193.94
200 <u>Personnel Services – Employee Benefits</u>				
210 Group Insurance – Contracted Provider	737.69	680.95		1,418.64
220 Social Security Contributions	27,613.46	25,489.36		53,102.82
230 PSERS Retirement Contributions	129,452.21	119,494.36		248,946.57
270 Group Insurance – Self-Insurance	70,142.23	64,746.66		134,888.89
Total Personnel Services – Employee Benefits	\$227,945.59	\$210,411.33		\$438,356.92
500 <u>Other Purchased Services</u>				
530 Communications	7.46	6.89		14.35
580 Travel	1,143.39	1,090.74		2,234.13
Total Other Purchased Services	\$1,150.85	\$1,097.63		\$2,248.48
600 <u>Supplies</u>				
610 General Supplies	135.79	198.20		333.99
Total Supplies	\$135.79	\$198.20		\$333.99
800 <u>Other Objects</u>				
810 Dues and Fees	171.60	158.40		330.00
Total Other Objects	\$171.60	\$158.40		\$330.00
Total 2110 Supervision of Student Services	\$613,784.68	\$566,678.65		\$1,180,463.33

LEA : 123465303 Methacton SD

Printed 10/14/2020 2:00:39 PM

General Fund (10)

2111 Supervision of Student Services – Head of Component	Elementary	Secondary	Federal	Total
100 Personnel Services – Salaries				
100 Personnel Services – Salaries	153,603.33	141,787.69		295,391.02
Total Personnel Services – Salaries	\$153,603.33	\$141,787.69		\$295,391.02
200 Personnel Services – Employee Benefits				
210 Group Insurance – Contracted Provider	211.72	195.44		407.16
220 Social Security Contributions	10,684.23	9,862.37		20,546.60
230 PSERS Retirement Contributions	51,665.84	47,691.55		99,357.39
270 Group Insurance – Self-Insurance	23,628.82	21,811.22		45,440.04
Total Personnel Services – Employee Benefits	\$86,190.61	\$79,560.58		\$165,751.19
500 Other Purchased Services				
530 Communications	7.46	6.89		14.35
580 Travel	23.22	811.44		834.66
Total Other Purchased Services	\$30.68	\$818.33		\$849.01
600 Supplies				
610 General Supplies	135.79	198.20		333.99
Total Supplies	\$135.79	\$198.20		\$333.99
800 Other Objects				
810 Dues and Fees	171.60	158.40		330.00
Total Other Objects	\$171.60	\$158.40		\$330.00
Total 2111 Supervision of Student Services – Head of Component	\$240,132.01	\$222,523.20		\$462,655.21

LEA : 123465303 Methacton SD

Printed 10/14/2020 2:00:39 PM

General Fund (10)

2119 Supervision of Student Services – All Other Supervision	Elementary	Secondary	Federal	Total
100 <u>Personnel Services – Salaries</u>				
100 Personnel Services – Salaries	230,777.52	213,025.40		443,802.92
Total Personnel Services – Salaries	\$230,777.52	\$213,025.40		\$443,802.92
200 <u>Personnel Services – Employee Benefits</u>				
210 Group Insurance – Contracted Provider	525.97	485.51		1,011.48
220 Social Security Contributions	16,929.23	15,626.99		32,556.22
230 PSERS Retirement Contributions	77,786.37	71,802.81		149,589.18
270 Group Insurance – Self-Insurance	46,513.41	42,935.44		89,448.85
Total Personnel Services – Employee Benefits	\$141,754.98	\$130,850.75		\$272,605.73
500 <u>Other Purchased Services</u>				
580 Travel	1,120.17	279.30		1,399.47
Total Other Purchased Services	\$1,120.17	\$279.30		\$1,399.47
Total 2119 Supervision of Student Services – All Other Supervision	\$373,652.67	\$344,155.45		\$717,808.12

LEA : 123465303 Methacton SD

Printed 10/14/2020 2:00:39 PM

General Fund (10)

2120 Guidance Services	Elementary	Secondary	Federal	Total
100 <u>Personnel Services – Salaries</u>				
100 Personnel Services – Salaries	629,404.28	980,527.36		1,609,931.64
Total Personnel Services – Salaries	\$629,404.28	\$980,527.36		\$1,609,931.64
200 <u>Personnel Services – Employee Benefits</u>				
210 Group Insurance – Contracted Provider	1,268.77	1,560.57		2,829.34
220 Social Security Contributions	45,195.75	69,681.68		114,877.43
230 PSERS Retirement Contributions	211,337.06	331,265.03		542,602.09
260 Workers' Compensation	5,177.48	4,779.21		9,956.69
270 Group Insurance – Self-Insurance	114,682.60	252,782.46		367,465.06
Total Personnel Services – Employee Benefits	\$377,661.66	\$660,068.95		\$1,037,730.61
300 <u>Purchased Professional and Technical Services</u>				
330 Other Professional Services		11,361.00		11,361.00
Total Purchased Professional and Technical Services		\$11,361.00		\$11,361.00
600 <u>Supplies</u>				
610 General Supplies	2,240.78	1,209.57		3,450.35
640 Books and Periodicals		637.41		637.41
Total Supplies	\$2,240.78	\$1,846.98		\$4,087.76
800 <u>Other Objects</u>				
810 Dues and Fees		129.00		129.00
890 Miscellaneous Expenditures		(6,407.13)	900.00	(5,507.13)
Total Other Objects		(\$6,278.13)	\$900.00	(\$5,378.13)
Total 2120 Guidance Services	\$1,009,306.72	\$1,647,526.16	\$900.00	\$2,657,732.88

LEA : 123465303 Methacton SD

Printed 10/14/2020 2:00:39 PM

General Fund (10)

2130 Attendance Services

Elementary Secondary Federal Total

100 <u>Personnel Services – Salaries</u>				
100 Personnel Services – Salaries				143,785.03
Total Personnel Services – Salaries				\$143,785.03
200 <u>Personnel Services – Employee Benefits</u>				
210 Group Insurance – Contracted Provider				203.76
220 Social Security Contributions				9,995.65
230 PSERS Retirement Contributions				49,303.75
270 Group Insurance – Self-Insurance				65,932.44
Total Personnel Services – Employee Benefits				\$125,435.60
500 <u>Other Purchased Services</u>				
580 Travel				275.00
Total Other Purchased Services				\$275.00
800 <u>Other Objects</u>				
810 Dues and Fees				70.00
Total Other Objects				\$70.00
Total 2130 Attendance Services				\$269,565.63

LEA : 123465303 Methacton SD

Printed 10/14/2020 2:00:39 PM

General Fund (10)

2140 Psychological Services	Elementary	Secondary	Federal	Total
100 <u>Personnel Services – Salaries</u>				
100 Personnel Services – Salaries	224,965.88	108,124.12		333,090.00
Total Personnel Services – Salaries	\$224,965.88	\$108,124.12		\$333,090.00
200 <u>Personnel Services – Employee Benefits</u>				
210 Group Insurance – Contracted Provider	169.80	58.68		228.48
220 Social Security Contributions	16,067.13	7,866.54		23,933.67
230 PSERS Retirement Contributions	77,140.71	36,929.95		114,070.66
270 Group Insurance – Self-Insurance	58,559.64	19,946.64		78,506.28
Total Personnel Services – Employee Benefits	\$151,937.28	\$64,801.81		\$216,739.09
300 <u>Purchased Professional and Technical Services</u>				
330 Other Professional Services		271,290.40		271,290.40
Total Purchased Professional and Technical Services		\$271,290.40		\$271,290.40
500 <u>Other Purchased Services</u>				
580 Travel	54.72			54.72
Total Other Purchased Services	\$54.72			\$54.72
600 <u>Supplies</u>				
610 General Supplies	6,733.91	11,857.70		18,591.61
Total Supplies	\$6,733.91	\$11,857.70		\$18,591.61
Total 2140 Psychological Services	\$383,691.79	\$456,074.03		\$839,765.82

LEA : 123465303 Methacton SD

Printed 10/14/2020 2:00:39 PM

General Fund (10)

2160 Social Work Services

<u>Elementary</u>	<u>Secondary</u>	<u>Federal</u>	<u>Total</u>
-------------------	------------------	----------------	--------------

300 Purchased Professional and Technical Services

330 Other Professional Services			465,140.00
---------------------------------	--	--	------------

Total Purchased Professional and Technical Services			\$465,140.00
Total 2160 Social Work Services			\$465,140.00

LEA : 123465303 Methacton SD

Printed 10/14/2020 2:00:39 PM

General Fund (10)

2200 Support Services – Instructional Staff	Elementary	Secondary	Federal	Total
100 Personnel Services – Salaries				
100 Personnel Services – Salaries	1,032,978.85	714,621.26	58,796.30	1,806,396.41
Total Personnel Services – Salaries	\$1,032,978.85	\$714,621.26	\$58,796.30	\$1,806,396.41
200 Personnel Services – Employee Benefits				
210 Group Insurance – Contracted Provider	1,266.85	953.30	28.30	2,248.45
220 Social Security Contributions	73,682.93	51,439.46	3,751.58	128,873.97
230 PSERS Retirement Contributions	350,164.56	241,390.79	19,804.72	611,360.07
240 Tuition Reimbursement	120,818.60	84,560.40		205,379.00
260 Workers' Compensation	2,973.16	2,744.45		5,717.61
270 Group Insurance – Self-Insurance	223,875.18	113,933.41	9,898.10	347,706.69
Total Personnel Services – Employee Benefits	\$772,781.28	\$495,021.81	\$33,482.70	\$1,301,285.79
300 Purchased Professional and Technical Services				
360 Employee Training and Development Services	26,092.82	24,370.68	60,810.90	111,274.40
Total Purchased Professional and Technical Services	\$26,092.82	\$24,370.68	\$60,810.90	\$111,274.40
500 Other Purchased Services				
580 Travel	2,920.20	2,695.56		5,615.76
Total Other Purchased Services	\$2,920.20	\$2,695.56		\$5,615.76
600 Supplies				
610 General Supplies	5,483.34	25,838.02		31,321.36
630 Food	215.39	198.82		414.21
640 Books and Periodicals	26,651.78	19,534.71		46,186.49
650 Supplies & Fees – Technology Related	(72.55)	2,669.57	425.00	3,022.02
Total Supplies	\$32,277.96	\$48,241.12	\$425.00	\$80,944.08
700 Property				
752 Capital Equipment – Original and Additional		3,699.00		3,699.00
Total Property		\$3,699.00		\$3,699.00
800 Other Objects				
810 Dues and Fees	2,013.08	133.92		2,147.00
Total Other Objects	\$2,013.08	\$133.92		\$2,147.00
Total 2200 Support Services – Instructional Staff	\$1,869,064.19	\$1,288,783.35	\$153,514.90	\$3,311,362.44

LEA : 123465303 Methacton SD

Printed 10/14/2020 2:00:39 PM

General Fund (10)

2220 Technology Support Services	Elementary	Secondary	Federal	Total
100 <u>Personnel Services – Salaries</u>				
100 Personnel Services – Salaries	175,375.68	136,891.82		312,267.50
Total Personnel Services – Salaries	\$175,375.68	\$136,891.82		\$312,267.50
200 <u>Personnel Services – Employee Benefits</u>				
210 Group Insurance – Contracted Provider	86.46	74.10		160.56
220 Social Security Contributions	12,813.93	10,241.32		23,055.25
230 PSERS Retirement Contributions	60,034.17	46,940.17		106,974.34
270 Group Insurance – Self-Insurance	29,807.10	14,666.82		44,473.92
Total Personnel Services – Employee Benefits	\$102,741.66	\$71,922.41		\$174,664.07
600 <u>Supplies</u>				
610 General Supplies	3,128.91	21,848.64		24,977.55
650 Supplies & Fees – Technology Related	99.00	2,374.57	425.00	2,898.57
Total Supplies	\$3,227.91	\$24,223.21	\$425.00	\$27,876.12
700 <u>Property</u>				
752 Capital Equipment – Original and Additional		3,699.00		3,699.00
Total Property		\$3,699.00		\$3,699.00
Total 2220 Technology Support Services	\$281,345.25	\$236,736.44	\$425.00	\$518,506.69

LEA : 123465303 Methacton SD

Printed 10/14/2020 2:00:39 PM

General Fund (10)				
2250 School Library Services	<u>Elementary</u>	<u>Secondary</u>	<u>Federal</u>	<u>Total</u>
100 <u>Personnel Services – Salaries</u>				
100 Personnel Services – Salaries	470,252.31	201,364.92		671,617.23
Total Personnel Services – Salaries	\$470,252.31	\$201,364.92		\$671,617.23
200 <u>Personnel Services – Employee Benefits</u>				
210 Group Insurance – Contracted Provider	1,053.83	762.38		1,816.21
220 Social Security Contributions	33,549.21	14,576.07		48,125.28
230 PSERS Retirement Contributions	161,211.83	68,998.94		230,210.77
260 Workers' Compensation	2,973.16	2,744.45		5,717.61
270 Group Insurance – Self-Insurance	140,136.45	49,483.56		189,620.01
Total Personnel Services – Employee Benefits	\$338,924.48	\$136,565.40		\$475,489.88
600 <u>Supplies</u>				
610 General Supplies	541.05	2,449.12		2,990.17
640 Books and Periodicals	22,388.51	16,140.33		38,528.84
650 Supplies & Fees – Technology Related	(171.55)	295.00		123.45
Total Supplies	\$22,758.01	\$18,884.45		\$41,642.46
800 <u>Other Objects</u>				
810 Dues and Fees		60.00		60.00
Total Other Objects		\$60.00		\$60.00
Total 2250 School Library Services	\$831,934.80	\$356,874.77		\$1,188,809.57

LEA : 123465303 Methacton SD

Printed 10/14/2020 2:00:39 PM

General Fund (10)

2260 Instruction and Curriculum Development Services	Elementary	Secondary	Federal	Total
100 <u>Personnel Services – Salaries</u>				
100 Personnel Services – Salaries	339,082.47	331,809.09		670,891.56
Total Personnel Services – Salaries	\$339,082.47	\$331,809.09		\$670,891.56
200 <u>Personnel Services – Employee Benefits</u>				
210 Group Insurance – Contracted Provider	105.96	97.80		203.76
220 Social Security Contributions	23,733.86	23,311.99		47,045.85
230 PSERS Retirement Contributions	112,956.12	110,717.12		223,673.24
270 Group Insurance – Self-Insurance	46,725.81	43,131.51		89,857.32
Total Personnel Services – Employee Benefits	\$183,521.75	\$177,258.42		\$360,780.17
600 <u>Supplies</u>				
610 General Supplies	144.77			144.77
640 Books and Periodicals	2,657.51	1,912.14		4,569.65
Total Supplies	\$2,802.28	\$1,912.14		\$4,714.42
800 <u>Other Objects</u>				
810 Dues and Fees	1,933.00			1,933.00
Total Other Objects	\$1,933.00			\$1,933.00
Total 2260 Instruction and Curriculum Development Services	\$527,339.50	\$510,979.65		\$1,038,319.15

LEA : 123465303 Methacton SD

Printed 10/14/2020 2:00:39 PM

General Fund (10)

2270 Instructional Staff Professional Development Services	Elementary	Secondary	Federal	Total
100 Personnel Services – Salaries				
100 Personnel Services – Salaries	48,268.39	44,555.43	58,796.30	151,620.12
Total Personnel Services – Salaries	\$48,268.39	\$44,555.43	\$58,796.30	\$151,620.12
200 Personnel Services – Employee Benefits				
210 Group Insurance – Contracted Provider	20.60	19.02	28.30	67.92
220 Social Security Contributions	3,585.93	3,310.08	3,751.58	10,647.59
230 PSERS Retirement Contributions	15,962.44	14,734.56	19,804.72	50,501.72
240 Tuition Reimbursement	120,818.60	84,560.40		205,379.00
270 Group Insurance – Self-Insurance	7,205.82	6,651.52	9,898.10	23,755.44
Total Personnel Services – Employee Benefits	\$147,593.39	\$109,275.58	\$33,482.70	\$290,351.67
300 Purchased Professional and Technical Services				
360 Employee Training and Development Services	26,092.82	24,370.68	60,810.90	111,274.40
Total Purchased Professional and Technical Services	\$26,092.82	\$24,370.68	\$60,810.90	\$111,274.40
500 Other Purchased Services				
580 Travel	2,920.20	2,695.56		5,615.76
Total Other Purchased Services	\$2,920.20	\$2,695.56		\$5,615.76
600 Supplies				
610 General Supplies	1,668.61	1,540.26		3,208.87
630 Food	215.39	198.82		414.21
640 Books and Periodicals	1,605.76	1,482.24		3,088.00
Total Supplies	\$3,489.76	\$3,221.32		\$6,711.08
800 Other Objects				
810 Dues and Fees	80.08	73.92		154.00
Total Other Objects	\$80.08	\$73.92		\$154.00
Total 2270 Instructional Staff Professional Development Services	\$228,444.64	\$184,192.49	\$153,089.90	\$565,727.03

LEA : 123465303 Methacton SD

Printed 10/14/2020 2:00:39 PM

General Fund (10)

2300 Support Services – Administration	Elementary	Secondary	Federal	Total
100 <u>Personnel Services – Salaries</u>				
100 Personnel Services – Salaries	1,329,308.93	1,340,517.85		3,390,400.13
Total Personnel Services – Salaries	\$1,329,308.93	\$1,340,517.85		\$3,390,400.13
200 <u>Personnel Services – Employee Benefits</u>				
210 Group Insurance – Contracted Provider	2,089.41	1,841.32		4,232.79
220 Social Security Contributions	93,896.55	94,601.94		237,331.52
230 PSERS Retirement Contributions	442,221.64	444,489.78		1,113,962.13
260 Workers' Compensation	6,943.44	6,409.32		13,398.72
270 Group Insurance – Self-Insurance	301,644.07	248,726.55		655,261.12
Total Personnel Services – Employee Benefits	\$846,795.11	\$796,068.91		\$2,024,186.28
300 <u>Purchased Professional and Technical Services</u>				
310 Official / Administrative Services				140,384.05
330 Other Professional Services				764,304.10
390 Other Purchased Professional and Technical Services				1,114.00
Total Purchased Professional and Technical Services				\$905,802.15
400 <u>Purchased Property Services</u>				
440 Rentals		5,325.00		5,325.00
Total Purchased Property Services		\$5,325.00		\$5,325.00
500 <u>Other Purchased Services</u>				
530 Communications				626.25
549 Other Advertising/Public Relations				4,875.72
550 Printing and Binding	262.05	14,191.38		15,407.13
580 Travel	335.54			7,744.47
591 Services Purchased Locally		1,538.42		1,538.42
Total Other Purchased Services	\$597.59	\$15,729.80		\$30,191.99
600 <u>Supplies</u>				
610 General Supplies	1,879.53	3,811.64		88,917.07
630 Food		132.04		4,801.14
640 Books and Periodicals	379.52	335.91		1,449.25
650 Supplies & Fees – Technology Related		30.00	109,825.00	133,109.50
Total Supplies	\$2,259.05	\$4,309.59	\$109,825.00	\$228,276.96
700 <u>Property</u>				
762 Capitalized Equipment - Replacement				25,395.00
Total Property				\$25,395.00
800 <u>Other Objects</u>				
810 Dues and Fees	3,047.95	6,271.99		28,845.36
820 Claims and Judgments Against the LEA				11,734.00
Total Other Objects	\$3,047.95	\$6,271.99		\$40,579.36
Total 2300 Support Services – Administration	\$2,182,008.63	\$2,168,223.14	\$109,825.00	\$6,650,156.87

LEA : 123465303 Methacton SD

Printed 10/14/2020 2:00:39 PM

General Fund (10)				
2310 Board Services				
	<u>Elementary</u>	<u>Secondary</u>	<u>Federal</u>	<u>Total</u>
500 <u>Other Purchased Services</u>				
549 Other Advertising/Public Relations				2,598.28
580 Travel				3,476.73
Total Other Purchased Services				\$6,075.01
600 <u>Supplies</u>				
610 General Supplies				1,220.15
630 Food				52.05
Total Supplies				\$1,272.20
800 <u>Other Objects</u>				
810 Dues and Fees				15,840.42
820 Claims and Judgments Against the LEA				11,734.00
Total Other Objects				\$27,574.42
Total 2310 Board Services				\$34,921.63

LEA : 123465303 Methacton SD

Printed 10/14/2020 2:00:39 PM

General Fund (10)				
2330 Tax Assessment and Collection Services	<u>Elementary</u>	<u>Secondary</u>	<u>Federal</u>	<u>Total</u>
100 <u>Personnel Services – Salaries</u>				
100 Personnel Services – Salaries				44,841.05
Total Personnel Services – Salaries				\$44,841.05
200 <u>Personnel Services – Employee Benefits</u>				
220 Social Security Contributions				3,430.22
Total Personnel Services – Employee Benefits				\$3,430.22
300 <u>Purchased Professional and Technical Services</u>				
310 Official / Administrative Services				140,384.05
330 Other Professional Services				115,023.00
Total Purchased Professional and Technical Services				\$255,407.05
600 <u>Supplies</u>				
610 General Supplies				11,411.97
Total Supplies				\$11,411.97
Total 2330 Tax Assessment and Collection Services				\$315,090.29

LEA : 123465303 Methacton SD

Printed 10/14/2020 2:00:39 PM

General Fund (10)				
2340 Staff Relations and Negotiations Services	<u>Elementary</u>	<u>Secondary</u>	<u>Federal</u>	<u>Total</u>
100 <u>Personnel Services – Salaries</u>				
100 Personnel Services – Salaries				261,787.60
Total Personnel Services – Salaries				\$261,787.60
200 <u>Personnel Services – Employee Benefits</u>				
210 Group Insurance – Contracted Provider				160.56
220 Social Security Contributions				18,933.85
230 PSERS Retirement Contributions				88,238.06
270 Group Insurance – Self-Insurance				49,357.92
Total Personnel Services – Employee Benefits				\$156,690.39
300 <u>Purchased Professional and Technical Services</u>				
330 Other Professional Services				9,028.00
390 Other Purchased Professional and Technical Services				1,114.00
Total Purchased Professional and Technical Services				\$10,142.00
500 <u>Other Purchased Services</u>				
549 Other Advertising/Public Relations				2,277.44
580 Travel				830.45
Total Other Purchased Services				\$3,107.89
600 <u>Supplies</u>				
610 General Supplies				3,375.58
640 Books and Periodicals				720.87
650 Supplies & Fees – Technology Related				16,250.00
Total Supplies				\$20,346.45
800 <u>Other Objects</u>				
810 Dues and Fees				670.00
Total Other Objects				\$670.00
Total 2340 Staff Relations and Negotiations Services				\$452,744.33

LEA : 123465303 Methacton SD

Printed 10/14/2020 2:00:39 PM

General Fund (10)

2350 Legal and Accounting Services	<u>Elementary</u>	<u>Secondary</u>	<u>Federal</u>	<u>Total</u>
300 <u>Purchased Professional and Technical Services</u>				
330 Other Professional Services				587,052.59
Total Purchased Professional and Technical Services				\$587,052.59
Total 2350 Legal and Accounting Services				\$587,052.59

LEA : 123465303 Methacton SD

Printed 10/14/2020 2:00:39 PM

General Fund (10)

2360 Office of the Superintendent / Executive Director Services	<u>Elementary</u>	<u>Secondary</u>	<u>Federal</u>	<u>Total</u>
100 <u>Personnel Services – Salaries</u>				
100 Personnel Services – Salaries				270,443.93
Total Personnel Services – Salaries				\$270,443.93
200 <u>Personnel Services – Employee Benefits</u>				
210 Group Insurance – Contracted Provider				67.92
220 Social Security Contributions				15,912.56
230 PSERS Retirement Contributions				90,669.22
270 Group Insurance – Self-Insurance				41,564.16
Total Personnel Services – Employee Benefits				\$148,213.86
300 <u>Purchased Professional and Technical Services</u>				
330 Other Professional Services				30,666.56
Total Purchased Professional and Technical Services				\$30,666.56
500 <u>Other Purchased Services</u>				
580 Travel				2,965.91
Total Other Purchased Services				\$2,965.91
600 <u>Supplies</u>				
610 General Supplies				65,946.18
630 Food				4,477.91
640 Books and Periodicals				12.95
650 Supplies & Fees – Technology Related			109,825.00	116,555.62
Total Supplies			\$109,825.00	\$186,992.66
800 <u>Other Objects</u>				
810 Dues and Fees				2,410.00
Total Other Objects				\$2,410.00
Total 2360 Office of the Superintendent / Executive Director Services			\$109,825.00	\$641,692.92

LEA : 123465303 Methacton SD

Printed 10/14/2020 2:00:39 PM

General Fund (10)				
2370 Community Relations Services				
	<u>Elementary</u>	<u>Secondary</u>	<u>Federal</u>	<u>Total</u>
100 <u>Personnel Services – Salaries</u>				
100 Personnel Services – Salaries				141,929.93
Total Personnel Services – Salaries				\$141,929.93
200 <u>Personnel Services – Employee Benefits</u>				
210 Group Insurance – Contracted Provider				73.58
220 Social Security Contributions				10,442.52
230 PSERS Retirement Contributions				47,804.75
260 Workers' Compensation				45.96
270 Group Insurance – Self-Insurance				13,968.42
Total Personnel Services – Employee Benefits				\$72,335.23
300 <u>Purchased Professional and Technical Services</u>				
330 Other Professional Services				33.95
Total Purchased Professional and Technical Services				\$33.95
500 <u>Other Purchased Services</u>				
530 Communications				626.25
550 Printing and Binding				953.70
580 Travel				135.84
Total Other Purchased Services				\$1,715.79
600 <u>Supplies</u>				
610 General Supplies				1,272.02
630 Food				139.14
650 Supplies & Fees – Technology Related				273.88
Total Supplies				\$1,685.04
800 <u>Other Objects</u>				
810 Dues and Fees				605.00
Total Other Objects				\$605.00
Total 2370 Community Relations Services				\$218,304.94

LEA : 123465303 Methacton SD

Printed 10/14/2020 2:00:39 PM

General Fund (10)

2380 Office of the Principal Services	Elementary	Secondary	Federal	Total
100 <u>Personnel Services – Salaries</u>				
100 Personnel Services – Salaries	1,329,308.93	1,340,517.85		2,669,826.78
Total Personnel Services – Salaries	\$1,329,308.93	\$1,340,517.85		\$2,669,826.78
200 <u>Personnel Services – Employee Benefits</u>				
210 Group Insurance – Contracted Provider	2,089.41	1,841.32		3,930.73
220 Social Security Contributions	93,896.55	94,601.94		188,498.49
230 PSERS Retirement Contributions	442,221.64	444,489.78		886,711.42
260 Workers' Compensation	6,943.44	6,409.32		13,352.76
270 Group Insurance – Self-Insurance	301,644.07	248,726.55		550,370.62
Total Personnel Services – Employee Benefits	\$846,795.11	\$796,068.91		\$1,642,864.02
400 <u>Purchased Property Services</u>				
440 Rentals		5,325.00		5,325.00
Total Purchased Property Services		\$5,325.00		\$5,325.00
500 <u>Other Purchased Services</u>				
550 Printing and Binding	262.05	14,191.38		14,453.43
580 Travel	335.54			335.54
591 Services Purchased Locally		1,538.42		1,538.42
Total Other Purchased Services	\$597.59	\$15,729.80		\$16,327.39
600 <u>Supplies</u>				
610 General Supplies	1,879.53	3,811.64		5,691.17
630 Food		132.04		132.04
640 Books and Periodicals	379.52	335.91		715.43
650 Supplies & Fees – Technology Related		30.00		30.00
Total Supplies	\$2,259.05	\$4,309.59		\$6,568.64
800 <u>Other Objects</u>				
810 Dues and Fees	3,047.95	6,271.99		9,319.94
Total Other Objects	\$3,047.95	\$6,271.99		\$9,319.94
Total 2380 Office of the Principal Services	\$2,182,008.63	\$2,168,223.14		\$4,350,231.77

LEA : 123465303 Methacton SD

Printed 10/14/2020 2:00:39 PM

General Fund (10)				
2390 Other Administration Services	<u>Elementary</u>	<u>Secondary</u>	<u>Federal</u>	<u>Total</u>
100 <u>Personnel Services – Salaries</u>				
100 Personnel Services – Salaries				1,570.84
Total Personnel Services – Salaries				\$1,570.84
200 <u>Personnel Services – Employee Benefits</u>				
220 Social Security Contributions				113.88
230 PSERS Retirement Contributions				538.68
Total Personnel Services – Employee Benefits				\$652.56
300 <u>Purchased Professional and Technical Services</u>				
330 Other Professional Services				22,500.00
Total Purchased Professional and Technical Services				\$22,500.00
700 <u>Property</u>				
762 Capitalized Equipment - Replacement				25,395.00
Total Property				\$25,395.00
Total 2390 Other Administration Services				\$50,118.40

LEA : 123465303 Methacton SD

Printed 10/14/2020 2:00:39 PM

General Fund (10)				
2400 Support Services – Pupil Health	<u>Elementary</u>	<u>Secondary</u>	<u>Federal</u>	<u>Total</u>
100 <u>Personnel Services – Salaries</u>				
100 Personnel Services – Salaries				827,015.13
Total Personnel Services – Salaries				\$827,015.13
200 <u>Personnel Services – Employee Benefits</u>				
210 Group Insurance – Contracted Provider				1,170.53
220 Social Security Contributions				59,443.33
230 PSERS Retirement Contributions				282,191.27
260 Workers' Compensation				2,844.38
270 Group Insurance – Self-Insurance				187,113.00
Total Personnel Services – Employee Benefits				\$532,762.51
300 <u>Purchased Professional and Technical Services</u>				
330 Other Professional Services				499,506.08
Total Purchased Professional and Technical Services				\$499,506.08
400 <u>Purchased Property Services</u>				
430 Repairs and Maintenance Services				286.20
Total Purchased Property Services				\$286.20
600 <u>Supplies</u>				
610 General Supplies			1,962.00	17,930.35
640 Books and Periodicals				246.00
Total Supplies			\$1,962.00	\$18,176.35
Total 2400 Support Services – Pupil Health			\$1,962.00	\$1,877,746.27

LEA : 123465303 Methacton SD

Printed 10/14/2020 2:00:39 PM

General Fund (10)				
2420 Medical Services				
	<u>Elementary</u>	<u>Secondary</u>	<u>Federal</u>	<u>Total</u>
100 <u>Personnel Services – Salaries</u>				
100 Personnel Services – Salaries				89,385.92
Total Personnel Services – Salaries				\$89,385.92
200 <u>Personnel Services – Employee Benefits</u>				
210 Group Insurance – Contracted Provider				67.92
220 Social Security Contributions				6,388.79
230 PSERS Retirement Contributions				30,650.44
270 Group Insurance – Self-Insurance				23,755.44
Total Personnel Services – Employee Benefits				\$60,862.59
300 <u>Purchased Professional and Technical Services</u>				
330 Other Professional Services				429,446.58
Total Purchased Professional and Technical Services				\$429,446.58
400 <u>Purchased Property Services</u>				
430 Repairs and Maintenance Services				286.20
Total Purchased Property Services				\$286.20
600 <u>Supplies</u>				
610 General Supplies				1,853.82
Total Supplies				\$1,853.82
Total 2420 Medical Services				\$581,835.11

LEA : 123465303 Methacton SD

Printed 10/14/2020 2:00:39 PM

General Fund (10)

2440 Nursing Services

	<u>Elementary</u>	<u>Secondary</u>	<u>Federal</u>	<u>Total</u>
100 <u>Personnel Services – Salaries</u>				
100 Personnel Services – Salaries				737,629.21
Total Personnel Services – Salaries				\$737,629.21
200 <u>Personnel Services – Employee Benefits</u>				
210 Group Insurance – Contracted Provider				1,102.61
220 Social Security Contributions				53,054.54
230 PSERS Retirement Contributions				251,540.83
260 Workers' Compensation				2,844.38
270 Group Insurance – Self-Insurance				163,357.56
Total Personnel Services – Employee Benefits				\$471,899.92
300 <u>Purchased Professional and Technical Services</u>				
330 Other Professional Services				70,059.50
Total Purchased Professional and Technical Services				\$70,059.50
600 <u>Supplies</u>				
610 General Supplies			1,962.00	15,936.03
640 Books and Periodicals				246.00
Total Supplies			\$1,962.00	\$16,182.03
Total 2440 Nursing Services			\$1,962.00	\$1,295,770.66

LEA : 123465303 Methacton SD

Printed 10/14/2020 2:00:39 PM

General Fund (10)				
2490 Other Health Services	<u>Elementary</u>	<u>Secondary</u>	<u>Federal</u>	<u>Total</u>
600 <u>Supplies</u>				
610 General Supplies				140.50
Total Supplies				\$140.50
Total 2490 Other Health Services				\$140.50

LEA : 123465303 Methacton SD

Printed 10/14/2020 2:00:39 PM

General Fund (10)				
2500 Support Services – Business	Elementary	Secondary	Federal	Total
100 <u>Personnel Services – Salaries</u>				
100 Personnel Services – Salaries				478,171.15
Total Personnel Services – Salaries				\$478,171.15
200 <u>Personnel Services – Employee Benefits</u>				
210 Group Insurance – Contracted Provider				727.34
220 Social Security Contributions				33,543.20
230 PSERS Retirement Contributions				160,681.96
260 Workers' Compensation				1,973.89
270 Group Insurance – Self-Insurance				93,533.98
Total Personnel Services – Employee Benefits				\$290,460.37
300 <u>Purchased Professional and Technical Services</u>				
330 Other Professional Services				30,902.05
Total Purchased Professional and Technical Services				\$30,902.05
400 <u>Purchased Property Services</u>				
440 Rentals				3,420.00
Total Purchased Property Services				\$3,420.00
500 <u>Other Purchased Services</u>				
520 Insurance – General				213,711.75
530 Communications				31,542.73
549 Other Advertising/Public Relations				295.55
580 Travel				129.17
Total Other Purchased Services				\$245,679.20
600 <u>Supplies</u>				
610 General Supplies			2,100.00	11,242.53
650 Supplies & Fees – Technology Related				6.36
Total Supplies			\$2,100.00	\$11,248.89
700 <u>Property</u>				
756 Capitalized Technology Equipment – Original				18,645.98
Total Property				\$18,645.98
800 <u>Other Objects</u>				
810 Dues and Fees				17,085.50
Total Other Objects				\$17,085.50
Total 2500 Support Services – Business			\$2,100.00	\$1,095,613.14

LEA : 123465303 Methacton SD

Printed 10/14/2020 2:00:39 PM

General Fund (10)				
2510 Fiscal Services				
	<u>Elementary</u>	<u>Secondary</u>	<u>Federal</u>	<u>Total</u>
100 <u>Personnel Services – Salaries</u>				
100 Personnel Services – Salaries				478,171.15
Total Personnel Services – Salaries				\$478,171.15
200 <u>Personnel Services – Employee Benefits</u>				
210 Group Insurance – Contracted Provider				727.34
220 Social Security Contributions				33,543.20
230 PSERS Retirement Contributions				160,681.96
260 Workers' Compensation				1,973.89
270 Group Insurance – Self-Insurance				93,533.98
Total Personnel Services – Employee Benefits				\$290,460.37
300 <u>Purchased Professional and Technical Services</u>				
330 Other Professional Services				30,902.05
Total Purchased Professional and Technical Services				\$30,902.05
500 <u>Other Purchased Services</u>				
530 Communications				1,307.73
549 Other Advertising/Public Relations				295.55
580 Travel				129.17
Total Other Purchased Services				\$1,732.45
600 <u>Supplies</u>				
610 General Supplies			2,100.00	9,971.85
650 Supplies & Fees – Technology Related				6.36
Total Supplies			\$2,100.00	\$9,978.21
700 <u>Property</u>				
756 Capitalized Technology Equipment – Original				18,645.98
Total Property				\$18,645.98
800 <u>Other Objects</u>				
810 Dues and Fees				17,085.50
Total Other Objects				\$17,085.50
Total 2510 Fiscal Services			\$2,100.00	\$846,975.71

LEA : 123465303 Methacton SD

Printed 10/14/2020 2:00:39 PM

General Fund (10)

2511 Supervision of Fiscal Services - Head of Component	<u>Elementary</u>	<u>Secondary</u>	<u>Federal</u>	<u>Total</u>
100 <u>Personnel Services – Salaries</u>				
100 Personnel Services – Salaries				161,767.44
Total Personnel Services – Salaries				\$161,767.44
200 <u>Personnel Services – Employee Benefits</u>				
210 Group Insurance – Contracted Provider				246.60
220 Social Security Contributions				10,715.70
230 PSERS Retirement Contributions				53,861.01
270 Group Insurance – Self-Insurance				22,926.48
Total Personnel Services – Employee Benefits				\$87,749.79
300 <u>Purchased Professional and Technical Services</u>				
330 Other Professional Services				13,500.00
Total Purchased Professional and Technical Services				\$13,500.00
500 <u>Other Purchased Services</u>				
549 Other Advertising/Public Relations				295.55
580 Travel				129.17
Total Other Purchased Services				\$424.72
600 <u>Supplies</u>				
650 Supplies & Fees – Technology Related				6.36
Total Supplies				\$6.36
800 <u>Other Objects</u>				
810 Dues and Fees				6,701.50
Total Other Objects				\$6,701.50
Total 2511 Supervision of Fiscal Services - Head of Component				\$270,149.81

LEA : 123465303 Methacton SD

Printed 10/14/2020 2:00:39 PM

General Fund (10)

2513 Receiving and Disbursing Funds Services	<u>Elementary</u>	<u>Secondary</u>	<u>Federal</u>	<u>Total</u>
100 <u>Personnel Services – Salaries</u>				
100 Personnel Services – Salaries				54,522.00
Total Personnel Services – Salaries				\$54,522.00
200 <u>Personnel Services – Employee Benefits</u>				
210 Group Insurance – Contracted Provider				67.92
220 Social Security Contributions				3,766.36
230 PSERS Retirement Contributions				18,695.52
270 Group Insurance – Self-Insurance				23,539.32
Total Personnel Services – Employee Benefits				\$46,069.12
500 <u>Other Purchased Services</u>				
530 Communications				44.00
Total Other Purchased Services				\$44.00
Total 2513 Receiving and Disbursing Funds Services				\$100,635.12

LEA : 123465303 Methacton SD

Printed 10/14/2020 2:00:39 PM

General Fund (10)

2514 Payroll Services

	<u>Elementary</u>	<u>Secondary</u>	<u>Federal</u>	<u>Total</u>
100 <u>Personnel Services – Salaries</u>				
100 Personnel Services – Salaries				49,354.50
Total Personnel Services – Salaries				\$49,354.50
200 <u>Personnel Services – Employee Benefits</u>				
210 Group Insurance – Contracted Provider				24.72
220 Social Security Contributions				3,615.08
230 PSERS Retirement Contributions				16,923.58
270 Group Insurance – Self-Insurance				7,995.24
Total Personnel Services – Employee Benefits				\$28,558.62
600 <u>Supplies</u>				
610 General Supplies				82.15
Total Supplies				\$82.15
Total 2514 Payroll Services				\$77,995.27

LEA : 123465303 Methacton SD

Printed 10/14/2020 2:00:39 PM

General Fund (10)

2515 Financial Accounting Services	<u>Elementary</u>	<u>Secondary</u>	<u>Federal</u>	<u>Total</u>
100 <u>Personnel Services – Salaries</u>				
100 Personnel Services – Salaries				119,327.75
Total Personnel Services – Salaries				\$119,327.75
200 <u>Personnel Services – Employee Benefits</u>				
210 Group Insurance – Contracted Provider				314.52
220 Social Security Contributions				8,760.21
230 PSERS Retirement Contributions				40,094.09
270 Group Insurance – Self-Insurance				18,807.12
Total Personnel Services – Employee Benefits				\$67,975.94
800 <u>Other Objects</u>				
810 Dues and Fees				6,589.00
Total Other Objects				\$6,589.00
Total 2515 Financial Accounting Services				\$193,892.69

LEA : 123465303 Methacton SD

Printed 10/14/2020 2:00:39 PM

General Fund (10)				
2519 Other Fiscal Services	<u>Elementary</u>	<u>Secondary</u>	<u>Federal</u>	<u>Total</u>
100 <u>Personnel Services – Salaries</u>				
100 Personnel Services – Salaries				93,199.46
Total Personnel Services – Salaries				\$93,199.46
200 <u>Personnel Services – Employee Benefits</u>				
210 Group Insurance – Contracted Provider				73.58
220 Social Security Contributions				6,685.85
230 PSERS Retirement Contributions				31,107.76
260 Workers' Compensation				1,973.89
270 Group Insurance – Self-Insurance				20,265.82
Total Personnel Services – Employee Benefits				\$60,106.90
300 <u>Purchased Professional and Technical Services</u>				
330 Other Professional Services				17,402.05
Total Purchased Professional and Technical Services				\$17,402.05
500 <u>Other Purchased Services</u>				
530 Communications				1,263.73
Total Other Purchased Services				\$1,263.73
600 <u>Supplies</u>				
610 General Supplies			2,100.00	9,889.70
Total Supplies			\$2,100.00	\$9,889.70
700 <u>Property</u>				
756 Capitalized Technology Equipment – Original				18,645.98
Total Property				\$18,645.98
800 <u>Other Objects</u>				
810 Dues and Fees				3,795.00
Total Other Objects				\$3,795.00
Total 2519 Other Fiscal Services			\$2,100.00	\$204,302.82

LEA : 123465303 Methacton SD

Printed 10/14/2020 2:00:39 PM

General Fund (10)				
2590 Other Support Services – Business	<u>Elementary</u>	<u>Secondary</u>	<u>Federal</u>	<u>Total</u>
400 <u>Purchased Property Services</u>				
440 Rentals				3,420.00
Total Purchased Property Services				\$3,420.00
500 <u>Other Purchased Services</u>				
520 Insurance – General				213,711.75
530 Communications				30,235.00
Total Other Purchased Services				\$243,946.75
600 <u>Supplies</u>				
610 General Supplies				1,270.68
Total Supplies				\$1,270.68
Total 2590 Other Support Services – Business				\$248,637.43

LEA : 123465303 Methacton SD

Printed 10/14/2020 2:00:39 PM

General Fund (10)				
2600 Operation and Maintenance of Plant Services	<u>Elementary</u>	<u>Secondary</u>	<u>Federal</u>	<u>Total</u>
100 <u>Personnel Services – Salaries</u>				
100 Personnel Services – Salaries				3,253,778.20
Total Personnel Services – Salaries				\$3,253,778.20
200 <u>Personnel Services – Employee Benefits</u>				
210 Group Insurance – Contracted Provider				4,954.10
220 Social Security Contributions				237,375.69
230 PSERS Retirement Contributions				1,100,587.84
260 Workers' Compensation				13,352.08
270 Group Insurance – Self-Insurance				618,362.99
299 All Other Employee Benefits				969.58
Total Personnel Services – Employee Benefits				\$1,975,602.28
300 <u>Purchased Professional and Technical Services</u>				
330 Other Professional Services				57,183.77
390 Other Purchased Professional and Technical Services				139,910.65
Total Purchased Professional and Technical Services				\$197,094.42
400 <u>Purchased Property Services</u>				
410 Cleaning Services				123,613.30
420 Utility Services				145,638.75
430 Repairs and Maintenance Services				1,058,823.88
440 Rentals				27,747.74
460 Extermination Services				9,092.75
490 Other Purchased Property Services				2,100.00
Total Purchased Property Services				\$1,367,016.42
500 <u>Other Purchased Services</u>				
530 Communications				74,742.70
580 Travel				934.41
Total Other Purchased Services				\$75,677.11
600 <u>Supplies</u>				
610 General Supplies	170,905.73	210,549.82	35,912.54	417,368.09
620 Energy				999,706.21
650 Supplies & Fees – Technology Related				3,998.00
Total Supplies	\$170,905.73	\$210,549.82	\$35,912.54	\$1,421,072.30
700 <u>Property</u>				
752 Capital Equipment – Original and Additional				183,126.09
762 Capitalized Equipment - Replacement				115,665.58
Total Property				\$298,791.67
800 <u>Other Objects</u>				
810 Dues and Fees				7,310.08
Total Other Objects				\$7,310.08
Total 2600 Operation and Maintenance of Plant Services	\$170,905.73	\$210,549.82	\$35,912.54	\$8,596,342.48

LEA : 123465303 Methacton SD

Printed 10/14/2020 2:00:39 PM

General Fund (10)

2610 Supervision of Operation and Maintenance of Plant Services	<u>Elementary</u>	<u>Secondary</u>	<u>Federal</u>	<u>Total</u>
100 <u>Personnel Services – Salaries</u>				
100 Personnel Services – Salaries				285,771.21
Total Personnel Services – Salaries				\$285,771.21
200 <u>Personnel Services – Employee Benefits</u>				
210 Group Insurance – Contracted Provider				685.64
220 Social Security Contributions				20,422.49
230 PSERS Retirement Contributions				95,122.05
270 Group Insurance – Self-Insurance				58,019.04
Total Personnel Services – Employee Benefits				\$174,249.22
500 <u>Other Purchased Services</u>				
580 Travel				502.05
Total Other Purchased Services				\$502.05
Total 2610 Supervision of Operation and Maintenance of Plant Services				\$460,522.48

LEA : 123465303 Methacton SD

Printed 10/14/2020 2:00:39 PM

General Fund (10)

2611 Supervision of Operation and Maintenance of Plant Services – Head of Component	<u>Elementary</u>	<u>Secondary</u>	<u>Federal</u>	<u>Total</u>
100 <u>Personnel Services – Salaries</u>				
100 Personnel Services – Salaries				180,994.56
Total Personnel Services – Salaries				\$180,994.56
200 <u>Personnel Services – Employee Benefits</u>				
210 Group Insurance – Contracted Provider				371.12
220 Social Security Contributions				12,849.88
230 PSERS Retirement Contributions				60,185.94
270 Group Insurance – Self-Insurance				39,211.92
Total Personnel Services – Employee Benefits				\$112,618.86
500 <u>Other Purchased Services</u>				
580 Travel				502.05
Total Other Purchased Services				\$502.05
Total 2611 Supervision of Operation and Maintenance of Plant Services – Head of Component				\$294,115.47

LEA : 123465303 Methacton SD

Printed 10/14/2020 2:00:39 PM

General Fund (10)

2619 Supervision of Operation and Maintenance of Plant Services – All Other Supervision	<u>Elementary</u>	<u>Secondary</u>	<u>Federal</u>	<u>Total</u>
100 <u>Personnel Services – Salaries</u>				
100 Personnel Services – Salaries				104,776.65
Total Personnel Services – Salaries				\$104,776.65
200 <u>Personnel Services – Employee Benefits</u>				
210 Group Insurance – Contracted Provider				314.52
220 Social Security Contributions				7,572.61
230 PSERS Retirement Contributions				34,936.11
270 Group Insurance – Self-Insurance				18,807.12
Total Personnel Services – Employee Benefits				\$61,630.36
Total 2619 Supervision of Operation and Maintenance of Plant Services – All Other Supervision				\$166,407.01

LEA : 123465303 Methacton SD

Printed 10/14/2020 2:00:39 PM

General Fund (10)				
2620 Operation of Buildings Services	<u>Elementary</u>	<u>Secondary</u>	<u>Federal</u>	<u>Total</u>
100 <u>Personnel Services – Salaries</u>				
100 Personnel Services – Salaries				2,673,853.31
Total Personnel Services – Salaries				\$2,673,853.31
200 <u>Personnel Services – Employee Benefits</u>				
210 Group Insurance – Contracted Provider				4,039.98
220 Social Security Contributions				195,544.56
230 PSERS Retirement Contributions				905,824.49
260 Workers' Compensation				13,352.08
270 Group Insurance – Self-Insurance				491,907.71
299 All Other Employee Benefits				969.58
Total Personnel Services – Employee Benefits				\$1,611,638.40
300 <u>Purchased Professional and Technical Services</u>				
330 Other Professional Services				56,289.27
Total Purchased Professional and Technical Services				\$56,289.27
400 <u>Purchased Property Services</u>				
410 Cleaning Services				52,567.35
420 Utility Services				145,638.75
430 Repairs and Maintenance Services				996,789.45
440 Rentals				11,168.76
460 Extermination Services				8,358.25
Total Purchased Property Services				\$1,214,522.56
500 <u>Other Purchased Services</u>				
530 Communications				74,742.70
Total Other Purchased Services				\$74,742.70
600 <u>Supplies</u>				
610 General Supplies	125,804.90	146,927.67	35,912.54	308,645.11
620 Energy				999,706.21
650 Supplies & Fees – Technology Related				3,998.00
Total Supplies	\$125,804.90	\$146,927.67	\$35,912.54	\$1,312,349.32
700 <u>Property</u>				
752 Capital Equipment – Original and Additional				28,873.11
Total Property				\$28,873.11
800 <u>Other Objects</u>				
810 Dues and Fees				75.50
Total Other Objects				\$75.50
Total 2620 Operation of Buildings Services	\$125,804.90	\$146,927.67	\$35,912.54	\$6,972,344.17

LEA : 123465303 Methacton SD

Printed 10/14/2020 2:00:39 PM

General Fund (10)				
2630 Care and Upkeep of Grounds Services	<u>Elementary</u>	<u>Secondary</u>	<u>Federal</u>	<u>Total</u>
100 <u>Personnel Services – Salaries</u>				
100 Personnel Services – Salaries				294,153.68
Total Personnel Services – Salaries				\$294,153.68
200 <u>Personnel Services – Employee Benefits</u>				
210 Group Insurance – Contracted Provider				228.48
220 Social Security Contributions				21,408.64
230 PSERS Retirement Contributions				99,641.30
270 Group Insurance – Self-Insurance				68,436.24
Total Personnel Services – Employee Benefits				\$189,714.66
400 <u>Purchased Property Services</u>				
410 Cleaning Services				70,418.50
430 Repairs and Maintenance Services				25,225.00
Total Purchased Property Services				\$95,643.50
600 <u>Supplies</u>				
610 General Supplies	16,730.77	38,705.51		55,436.28
Total Supplies	\$16,730.77	\$38,705.51		\$55,436.28
Total 2630 Care and Upkeep of Grounds Services	\$16,730.77	\$38,705.51		\$634,948.12

LEA : 123465303 Methacton SD

Printed 10/14/2020 2:00:39 PM

General Fund (10)				
2640 Care and Upkeep of Equipment Services	<u>Elementary</u>	<u>Secondary</u>	<u>Federal</u>	<u>Total</u>
400 <u>Purchased Property Services</u>				
430 Repairs and Maintenance Services				12,880.01
Total Purchased Property Services				\$12,880.01
600 <u>Supplies</u>				
610 General Supplies	23,110.48	20,061.63		43,172.11
Total Supplies	\$23,110.48	\$20,061.63		\$43,172.11
700 <u>Property</u>				
752 Capital Equipment – Original and Additional				154,252.98
762 Capitalized Equipment - Replacement				33,200.58
Total Property				\$187,453.56
Total 2640 Care and Upkeep of Equipment Services	\$23,110.48	\$20,061.63		\$243,505.68

LEA : 123465303 Methacton SD

Printed 10/14/2020 2:00:39 PM

General Fund (10)				
2650 Vehicle Operation and Maintenance Services (Other Than Student Transportation Vehicles)	<u>Elementary</u>	<u>Secondary</u>	<u>Federal</u>	<u>Total</u>
400 <u>Purchased Property Services</u>				
430 Repairs and Maintenance Services				15,166.10
Total Purchased Property Services				\$15,166.10
600 <u>Supplies</u>				
610 General Supplies	1,811.54	1,672.20		3,483.74
Total Supplies	\$1,811.54	\$1,672.20		\$3,483.74
700 <u>Property</u>				
762 Capitalized Equipment - Replacement				82,465.00
Total Property				\$82,465.00
Total 2650 Vehicle Operation and Maintenance Services (Other Than Student Transportation Vehicles)	\$1,811.54	\$1,672.20		\$101,114.84

LEA : 123465303 Methacton SD

Printed 10/14/2020 2:00:39 PM

General Fund (10)

2690 Other Operation and Maintenance of Plant Services	<u>Elementary</u>	<u>Secondary</u>	<u>Federal</u>	<u>Total</u>
300 <u>Purchased Professional and Technical Services</u>				
330 Other Professional Services				894.50
390 Other Purchased Professional and Technical Services				139,910.65
Total Purchased Professional and Technical Services				\$140,805.15
400 <u>Purchased Property Services</u>				
410 Cleaning Services				627.45
430 Repairs and Maintenance Services				8,763.32
440 Rentals				16,578.98
460 Extermination Services				734.50
490 Other Purchased Property Services				2,100.00
Total Purchased Property Services				\$28,804.25
500 <u>Other Purchased Services</u>				
580 Travel				432.36
Total Other Purchased Services				\$432.36
600 <u>Supplies</u>				
610 General Supplies	3,448.04	3,182.81		6,630.85
Total Supplies	\$3,448.04	\$3,182.81		\$6,630.85
800 <u>Other Objects</u>				
810 Dues and Fees				7,234.58
Total Other Objects				\$7,234.58
Total 2690 Other Operation and Maintenance of Plant Services	\$3,448.04	\$3,182.81		\$183,907.19

LEA : 123465303 Methacton SD

Printed 10/14/2020 2:00:39 PM

General Fund (10)

2700 Student Transportation Services	<u>Elementary</u>	<u>Secondary</u>	<u>Federal</u>	<u>Total</u>
100 <u>Personnel Services – Salaries</u>				
100 Personnel Services – Salaries				235,693.15
Total Personnel Services – Salaries				\$235,693.15
200 <u>Personnel Services – Employee Benefits</u>				
210 Group Insurance – Contracted Provider				391.53
220 Social Security Contributions				16,650.56
230 PSERS Retirement Contributions				80,380.41
270 Group Insurance – Self-Insurance				84,574.07
Total Personnel Services – Employee Benefits				\$181,996.57
300 <u>Purchased Professional and Technical Services</u>				
330 Other Professional Services				15,000.00
Total Purchased Professional and Technical Services				\$15,000.00
400 <u>Purchased Property Services</u>				
450 Construction Services				2,000.00
Total Purchased Property Services				\$2,000.00
500 <u>Other Purchased Services</u>				
513 Contracted Carriers			220.09	5,291,939.19
516 Student Transportation Services From the IU				207,105.20
519 Student Transportation Services From Other Sources				3,730.90
Total Other Purchased Services			\$220.09	\$5,502,775.29
600 <u>Supplies</u>				
610 General Supplies				4,472.94
620 Energy				61,187.39
Total Supplies				\$65,660.33
Total 2700 Student Transportation Services			\$220.09	\$6,003,125.34

LEA : 123465303 Methacton SD

Printed 10/14/2020 2:00:39 PM

General Fund (10)

2710 Supervision of Student Transportation Services	<u>Elementary</u>	<u>Secondary</u>	<u>Federal</u>	<u>Total</u>
100 <u>Personnel Services – Salaries</u>				
100 Personnel Services – Salaries				24,744.29
Total Personnel Services – Salaries				\$24,744.29
200 <u>Personnel Services – Employee Benefits</u>				
210 Group Insurance – Contracted Provider				35.13
220 Social Security Contributions				1,664.44
230 PSERS Retirement Contributions				8,484.84
270 Group Insurance – Self-Insurance				11,709.00
Total Personnel Services – Employee Benefits				\$21,893.41
Total 2710 Supervision of Student Transportation Services				\$46,637.70

LEA : 123465303 Methacton SD

Printed 10/14/2020 2:00:39 PM

General Fund (10)

2719 Supervision of Student Transportation Services – All Other Supervision	<u>Elementary</u>	<u>Secondary</u>	<u>Federal</u>	<u>Total</u>
100 <u>Personnel Services – Salaries</u>				
100 Personnel Services – Salaries				24,744.29
Total Personnel Services – Salaries				\$24,744.29
200 <u>Personnel Services – Employee Benefits</u>				
210 Group Insurance – Contracted Provider				35.13
220 Social Security Contributions				1,664.44
230 PSERS Retirement Contributions				8,484.84
270 Group Insurance – Self-Insurance				11,709.00
Total Personnel Services – Employee Benefits				\$21,893.41
Total 2719 Supervision of Student Transportation Services – All Other Supervision				\$46,637.70

LEA : 123465303 Methacton SD

Printed 10/14/2020 2:00:39 PM

General Fund (10)

2720 Vehicle Operation Services	<u>Elementary</u>	<u>Secondary</u>	<u>Federal</u>	<u>Total</u>
100 <u>Personnel Services – Salaries</u>				
100 Personnel Services – Salaries				167,428.86
Total Personnel Services – Salaries				\$167,428.86
200 <u>Personnel Services – Employee Benefits</u>				
210 Group Insurance – Contracted Provider				312.06
220 Social Security Contributions				11,841.73
230 PSERS Retirement Contributions				57,022.27
270 Group Insurance – Self-Insurance				63,287.58
Total Personnel Services – Employee Benefits				\$132,463.64
500 <u>Other Purchased Services</u>				
513 Contracted Carriers			220.09	4,469,571.58
516 Student Transportation Services From the IU				183,651.83
519 Student Transportation Services From Other Sources				116.08
Total Other Purchased Services			\$220.09	\$4,653,339.49
600 <u>Supplies</u>				
610 General Supplies				3,966.41
620 Energy				54,258.30
Total Supplies				\$58,224.71
Total 2720 Vehicle Operation Services			\$220.09	\$5,011,456.70

LEA : 123465303 Methacton SD

Printed 10/14/2020 2:00:39 PM

General Fund (10)

2730 Monitoring Services

Elementary Secondary Federal Total

100 <u>Personnel Services – Salaries</u>				
100 Personnel Services – Salaries				18,978.40
Total Personnel Services – Salaries				\$18,978.40
200 <u>Personnel Services – Employee Benefits</u>				
220 Social Security Contributions				1,419.57
230 PSERS Retirement Contributions				6,507.68
Total Personnel Services – Employee Benefits				\$7,927.25
Total 2730 Monitoring Services				\$26,905.65

LEA : 123465303 Methacton SD

Printed 10/14/2020 2:00:39 PM

General Fund (10)

2740 Vehicle Servicing and Maintenance Services	<u>Elementary</u>	<u>Secondary</u>	<u>Federal</u>	<u>Total</u>
400 <u>Purchased Property Services</u>				
450 Construction Services				1,773.51
Total Purchased Property Services				\$1,773.51
500 <u>Other Purchased Services</u>				
513 Contracted Carriers				223,113.43
Total Other Purchased Services				\$223,113.43
Total 2740 Vehicle Servicing and Maintenance Services				\$224,886.94

LEA : 123465303 Methacton SD

Printed 10/14/2020 2:00:39 PM

General Fund (10)

2750 Nonpublic Transportation	<u>Elementary</u>	<u>Secondary</u>	<u>Federal</u>	<u>Total</u>
100 <u>Personnel Services – Salaries</u>				
100 Personnel Services – Salaries				24,541.60
Total Personnel Services – Salaries				\$24,541.60
200 <u>Personnel Services – Employee Benefits</u>				
210 Group Insurance – Contracted Provider				44.34
220 Social Security Contributions				1,724.82
230 PSERS Retirement Contributions				8,365.62
270 Group Insurance – Self-Insurance				9,577.49
Total Personnel Services – Employee Benefits				\$19,712.27
300 <u>Purchased Professional and Technical Services</u>				
330 Other Professional Services				1,698.66
Total Purchased Professional and Technical Services				\$1,698.66
400 <u>Purchased Property Services</u>				
450 Construction Services				226.49
Total Purchased Property Services				\$226.49
500 <u>Other Purchased Services</u>				
513 Contracted Carriers				599,254.18
516 Student Transportation Services From the IU				23,453.37
519 Student Transportation Services From Other Sources				422.50
Total Other Purchased Services				\$623,130.05
600 <u>Supplies</u>				
610 General Supplies				506.53
620 Energy				6,929.09
Total Supplies				\$7,435.62
Total 2750 Nonpublic Transportation				\$676,744.69

LEA : 123465303 Methacton SD

Printed 10/14/2020 2:00:39 PM

General Fund (10)

2790 Other Student Transportation Services	<u>Elementary</u>	<u>Secondary</u>	<u>Federal</u>	<u>Total</u>
300 <u>Purchased Professional and Technical Services</u>				
330 Other Professional Services				13,301.34
Total Purchased Professional and Technical Services				\$13,301.34
500 <u>Other Purchased Services</u>				
519 Student Transportation Services From Other Sources				3,192.32
Total Other Purchased Services				\$3,192.32
Total 2790 Other Student Transportation Services				\$16,493.66

LEA : 123465303 Methacton SD

Printed 10/14/2020 2:00:39 PM

General Fund (10)				
2800 Support Services – Central	<u>Elementary</u>	<u>Secondary</u>	<u>Federal</u>	<u>Total</u>
100 <u>Personnel Services – Salaries</u>				
100 Personnel Services – Salaries				637,367.08
Total Personnel Services – Salaries				\$637,367.08
200 <u>Personnel Services – Employee Benefits</u>				
210 Group Insurance – Contracted Provider				819.48
220 Social Security Contributions				46,892.45
230 PSERS Retirement Contributions				215,621.87
240 Tuition Reimbursement				25,863.00
260 Workers' Compensation				2,937.81
270 Group Insurance – Self-Insurance				107,517.58
Total Personnel Services – Employee Benefits				\$399,652.19
300 <u>Purchased Professional and Technical Services</u>				
330 Other Professional Services				15,805.00
360 Employee Training and Development Services				23,156.00
Total Purchased Professional and Technical Services				\$38,961.00
400 <u>Purchased Property Services</u>				
430 Repairs and Maintenance Services				27,319.68
440 Rentals				127,079.78
Total Purchased Property Services				\$154,399.46
500 <u>Other Purchased Services</u>				
530 Communications				33,539.49
580 Travel				71.46
Total Other Purchased Services				\$33,610.95
600 <u>Supplies</u>				
610 General Supplies				78,448.47
650 Supplies & Fees – Technology Related				350,812.69
Total Supplies				\$429,261.16
700 <u>Property</u>				
752 Capital Equipment – Original and Additional				24,755.00
762 Capitalized Equipment - Replacement				42,099.98
Total Property				\$66,854.98
Total 2800 Support Services – Central				\$1,760,106.82

LEA : 123465303 Methacton SD

Printed 10/14/2020 2:00:39 PM

General Fund (10)				
2810 Planning, Research, Development and Evaluation Services	<u>Elementary</u>	<u>Secondary</u>	<u>Federal</u>	<u>Total</u>
100 <u>Personnel Services – Salaries</u>				
100 Personnel Services – Salaries				637,367.08
Total Personnel Services – Salaries				\$637,367.08
200 <u>Personnel Services – Employee Benefits</u>				
210 Group Insurance – Contracted Provider				819.48
220 Social Security Contributions				46,892.45
230 PSERS Retirement Contributions				215,621.87
260 Workers' Compensation				2,937.81
270 Group Insurance – Self-Insurance				107,517.58
Total Personnel Services – Employee Benefits				\$373,789.19
300 <u>Purchased Professional and Technical Services</u>				
330 Other Professional Services				15,805.00
Total Purchased Professional and Technical Services				\$15,805.00
400 <u>Purchased Property Services</u>				
430 Repairs and Maintenance Services				27,319.68
Total Purchased Property Services				\$27,319.68
500 <u>Other Purchased Services</u>				
580 Travel				71.46
Total Other Purchased Services				\$71.46
600 <u>Supplies</u>				
610 General Supplies				78,448.47
650 Supplies & Fees – Technology Related				350,812.69
Total Supplies				\$429,261.16
700 <u>Property</u>				
752 Capital Equipment – Original and Additional				24,755.00
762 Capitalized Equipment - Replacement				42,099.98
Total Property				\$66,854.98
Total 2810 Planning, Research, Development and Evaluation Services				\$1,550,468.55

LEA : 123465303 Methacton SD

Printed 10/14/2020 2:00:39 PM

General Fund (10)

2830 Staff Services

Elementary Secondary Federal Total

200 <u>Personnel Services – Employee Benefits</u>				
240 Tuition Reimbursement				25,863.00
Total Personnel Services – Employee Benefits				\$25,863.00
300 <u>Purchased Professional and Technical Services</u>				
360 Employee Training and Development Services				23,156.00
Total Purchased Professional and Technical Services				\$23,156.00
Total 2830 Staff Services				\$49,019.00

LEA : 123465303 Methacton SD

Printed 10/14/2020 2:00:39 PM

General Fund (10)

2834 Staff Development Services – Non-Instructional, Certified Staff Only	<u>Elementary</u>	<u>Secondary</u>	<u>Federal</u>	<u>Total</u>
200 <u>Personnel Services – Employee Benefits</u>				
240 Tuition Reimbursement				25,863.00
Total Personnel Services – Employee Benefits				\$25,863.00
300 <u>Purchased Professional and Technical Services</u>				
360 Employee Training and Development Services				18,588.00
Total Purchased Professional and Technical Services				\$18,588.00
Total 2834 Staff Development Services – Non-Instructional, Certified Staff Only				\$44,451.00

LEA : 123465303 Methacton SD

Printed 10/14/2020 2:00:39 PM

General Fund (10)

2836 Staff Development Services – Non-Instructional, Non-Certified Staff Only	<u>Elementary</u>	<u>Secondary</u>	<u>Federal</u>	<u>Total</u>
300 <u>Purchased Professional and Technical Services</u>				
360 Employee Training and Development Services				4,568.00
Total Purchased Professional and Technical Services				\$4,568.00
Total 2836 Staff Development Services – Non-Instructional, Non-Certified Staff Only				\$4,568.00

LEA : 123465303 Methacton SD

Printed 10/14/2020 2:00:39 PM

General Fund (10)				
2840 Data Processing Services	<u>Elementary</u>	<u>Secondary</u>	<u>Federal</u>	<u>Total</u>
400 <u>Purchased Property Services</u>				
440 Rentals				127,079.78
Total Purchased Property Services				\$127,079.78
Total 2840 Data Processing Services				\$127,079.78

LEA : 123465303 Methacton SD

Printed 10/14/2020 2:00:39 PM

General Fund (10)

2890 Other Support Services Central	<u>Elementary</u>	<u>Secondary</u>	<u>Federal</u>	<u>Total</u>
500 <u>Other Purchased Services</u>				
530 Communications				33,539.49
Total Other Purchased Services				\$33,539.49
Total 2890 Other Support Services Central				\$33,539.49

LEA : 123465303 Methacton SD

Printed 10/14/2020 2:00:39 PM

General Fund (10)

2900 Other Support Services	<u>Elementary</u>	<u>Secondary</u>	<u>Federal</u>	<u>Total</u>
500 <u>Other Purchased Services</u>				
595 IU Payments By Withholding				67,743.42
Total Other Purchased Services				\$67,743.42
Total 2900 Other Support Services				\$67,743.42

LEA : 123465303 Methacton SD

Printed 10/14/2020 2:00:39 PM

General Fund (10)

2910 Support Services Not Listed Elsewhere In the 2000 Series

Elementary Secondary Federal Total

500 Other Purchased Services

595 IU Payments By Withholding 67,743.42

Total Other Purchased Services \$67,743.42

Total 2910 Support Services Not Listed Elsewhere In the 2000 Series \$67,743.42

LEA : 123465303 Methacton SD

Printed 10/14/2020 2:00:48 PM

General Fund (10)	
3000 Operation of Non-Instructional Services	<u>Total</u>
100 <u>Personnel Services – Salaries</u>	
100 Personnel Services – Salaries	875,710.06
Total Personnel Services – Salaries	\$875,710.06
200 <u>Personnel Services – Employee Benefits</u>	
210 Group Insurance – Contracted Provider	67.92
220 Social Security Contributions	65,337.56
230 PSERS Retirement Contributions	268,572.17
270 Group Insurance – Self-Insurance	18,637.68
Total Personnel Services – Employee Benefits	\$352,615.33
300 <u>Purchased Professional and Technical Services</u>	
323 Professional Educational Services – Other Educational Agencies	200.00
329 Professional Educational Services – Other	3,191.54
330 Other Professional Services	62,247.14
390 Other Purchased Professional and Technical Services	1,089.00
Total Purchased Professional and Technical Services	\$66,727.68
400 <u>Purchased Property Services</u>	
410 Cleaning Services	9,426.36
430 Repairs and Maintenance Services	1,088.00
440 Rentals	4,451.65
Total Purchased Property Services	\$14,966.01
500 <u>Other Purchased Services</u>	
510 Student Transportation Services	172.93
520 Insurance – General	5,898.00
580 Travel	9,859.26
591 Services Purchased Locally	30,227.00
Total Other Purchased Services	\$46,157.19
600 <u>Supplies</u>	
610 General Supplies	109,290.22
630 Food	180.70
640 Books and Periodicals	60.00
650 Supplies & Fees – Technology Related	875.00
Total Supplies	\$110,405.92
700 <u>Property</u>	
762 Capitalized Equipment - Replacement	20,156.70
Total Property	\$20,156.70
800 <u>Other Objects</u>	
810 Dues and Fees	36,769.40
890 Miscellaneous Expenditures	5,623.70
Total Other Objects	\$42,393.10
Total 3000 Operation of Non-Instructional Services	\$1,529,131.99

LEA : 123465303 Methacton SD

Printed 10/14/2020 2:00:48 PM

General Fund (10)				
3200 Student Activities	<u>Elementary</u>	<u>Secondary</u>	<u>Federal</u>	<u>Total</u>
100 <u>Personnel Services – Salaries</u>				
100 Personnel Services – Salaries				875,710.06
Total Personnel Services – Salaries				\$875,710.06
200 <u>Personnel Services – Employee Benefits</u>				
210 Group Insurance – Contracted Provider				67.92
220 Social Security Contributions				65,337.56
230 PSERS Retirement Contributions				268,572.17
270 Group Insurance – Self-Insurance				18,637.68
Total Personnel Services – Employee Benefits				\$352,615.33
300 <u>Purchased Professional and Technical Services</u>				
329 Professional Educational Services – Other				3,191.54
330 Other Professional Services				62,247.14
390 Other Purchased Professional and Technical Services				1,089.00
Total Purchased Professional and Technical Services				\$66,527.68
400 <u>Purchased Property Services</u>				
410 Cleaning Services				9,426.36
430 Repairs and Maintenance Services				1,088.00
440 Rentals				4,451.65
Total Purchased Property Services				\$14,966.01
500 <u>Other Purchased Services</u>				
510 Student Transportation Services				172.93
520 Insurance – General				5,898.00
580 Travel				9,859.26
591 Services Purchased Locally				30,227.00
Total Other Purchased Services				\$46,157.19
600 <u>Supplies</u>				
610 General Supplies				108,790.22
650 Supplies & Fees – Technology Related				875.00
Total Supplies				\$109,665.22
700 <u>Property</u>				
762 Capitalized Equipment - Replacement				20,156.70
Total Property				\$20,156.70
800 <u>Other Objects</u>				
810 Dues and Fees				36,769.40
890 Miscellaneous Expenditures				5,623.70
Total Other Objects				\$42,393.10
Total 3200 Student Activities				\$1,528,191.29

LEA : 123465303 Methacton SD

Printed 10/14/2020 2:00:48 PM

General Fund (10)

3300 Community Services

Elementary Secondary Federal Total

300 Purchased Professional and Technical Services

323 Professional Educational Services – Other Educational Agencies 200.00

Total Purchased Professional and Technical Services \$200.00

600 Supplies

610 General Supplies 500.00

630 Food 89.50 180.70

640 Books and Periodicals 60.00

Total Supplies \$89.50 \$740.70

Total 3300 Community Services \$89.50 \$940.70

LEA : 123465303 Methacton SD

Printed 10/14/2020 2:00:57 PM

General Fund (10)

5000 Other Expenditures and Financing Uses

Total

800	<u>Other Objects</u>	
830	Interest	2,409,970.30
880	Refunds of Prior Years' Receipts	108,618.40
Total Other Objects		\$2,518,588.70
900	<u>Other Uses of Funds</u>	
910	Redemption of Principal	7,850,023.10
Total Other Uses of Funds		\$7,850,023.10
Total 5000 Other Expenditures and Financing Uses		\$10,368,611.80

LEA : 123465303 Methacton SD

Printed 10/14/2020 2:00:57 PM

General Fund (10)

5100 Debt Service / Other Expenditures and Financing Uses	<u>Elementary</u>	<u>Secondary</u>	<u>Federal</u>	<u>Total</u>
800 <u>Other Objects</u>				
830 Interest				2,409,970.30
880 Refunds of Prior Years' Receipts				108,618.40
Total Other Objects				\$2,518,588.70
900 <u>Other Uses of Funds</u>				
910 Redemption of Principal				7,850,023.10
Total Other Uses of Funds				\$7,850,023.10
Total 5100 Debt Service / Other Expenditures and Financing Uses				\$10,368,611.80

LEA : 123465303 Methacton SD

Printed 10/14/2020 2:00:57 PM

General Fund (10)				
5110 Debt Service	<u>Elementary</u>	<u>Secondary</u>	<u>Federal</u>	<u>Total</u>
800 <u>Other Objects</u>				
830 Interest				2,409,970.30
Total Other Objects				\$2,409,970.30
900 <u>Other Uses of Funds</u>				
910 Redemption of Principal				7,850,023.10
Total Other Uses of Funds				\$7,850,023.10
Total 5110 Debt Service				\$10,259,993.40

LEA : 123465303 Methacton SD

Printed 10/14/2020 2:00:57 PM

General Fund (10)

5130 Refund of Prior Year Revenues / Receipts	<u>Elementary</u>	<u>Secondary</u>	<u>Federal</u>	<u>Total</u>
800 <u>Other Objects</u>				
880 Refunds of Prior Years' Receipts				108,618.40
Total Other Objects				\$108,618.40
Total 5130 Refund of Prior Year Revenues / Receipts				\$108,618.40

LEA : 123465303 Methacton SD

Printed 10/14/2020 2:00:44 PM

Other Capital Projects Fund (39)

2000 Support Services

Total

700 Property

752 Capital Equipment – Original and Additional	12,378.22
762 Capitalized Equipment - Replacement	4,261.00

Total Property	\$16,639.22
----------------	-------------

800 Other Objects

810 Dues and Fees	182,561.35
890 Miscellaneous Expenditures	63,950.93

Total Other Objects	\$246,512.28
---------------------	--------------

Total 2000 Support Services	\$263,151.50
-----------------------------	--------------

Page 138

LEA : 123465303 Methacton SD

Printed 10/14/2020 2:00:44 PM

Other Capital Projects Fund (39)				
2390 Other Administration Services	<u>Elementary</u>	<u>Secondary</u>	<u>Federal</u>	<u>Total</u>
800 <u>Other Objects</u>				
810 Dues and Fees				182,561.35
890 Miscellaneous Expenditures				63,950.93
Total Other Objects				\$246,512.28
Total 2390 Other Administration Services				\$246,512.28

LEA : 123465303 Methacton SD

Printed 10/14/2020 2:00:44 PM

Other Capital Projects Fund (39)

2600 Operation and Maintenance of Plant Services

Elementary

Secondary

Federal

Total

700 Property

752 Capital Equipment – Original and Additional

12,378.22

Total Property

\$12,378.22

Total 2600 Operation and Maintenance of Plant Services

\$12,378.22

LEA : 123465303 Methacton SD

Printed 10/14/2020 2:00:44 PM

Other Capital Projects Fund (39)

2620 Operation of Buildings Services	<u>Elementary</u>	<u>Secondary</u>	<u>Federal</u>	<u>Total</u>
700 <u>Property</u>				
752 Capital Equipment – Original and Additional				12,378.22
Total Property				\$12,378.22
Total 2620 Operation of Buildings Services				\$12,378.22

LEA : 123465303 Methacton SD

Printed 10/14/2020 2:00:44 PM

Other Capital Projects Fund (39)

2700 Student Transportation Services

<u>Elementary</u>	<u>Secondary</u>	<u>Federal</u>	<u>Total</u>
-------------------	------------------	----------------	--------------

700 <u>Property</u>				
762 Capitalized Equipment - Replacement				4,261.00

Total Property				\$4,261.00
Total 2700 Student Transportation Services				\$4,261.00

LEA : 123465303 Methacton SD

Printed 10/14/2020 2:00:44 PM

Other Capital Projects Fund (39)

2720 Vehicle Operation Services

Elementary Secondary Federal Total

700 <u>Property</u>				
762 Capitalized Equipment - Replacement				4,261.00
Total Property				\$4,261.00
Total 2720 Vehicle Operation Services				\$4,261.00

LEA : 123465303 Methacton SD

Printed 10/14/2020 2:00:52 PM

Other Capital Projects Fund (39)

4000 Facilities Acquisition, Construction and Improvement Services

Total

300 Purchased Professional and Technical Services

330 Other Professional Services	2,074,143.32
---------------------------------	--------------

Total Purchased Professional and Technical Services	\$2,074,143.32
--	-----------------------

400 Purchased Property Services

430 Repairs and Maintenance Services	107,982.00
--------------------------------------	------------

450 Construction Services	3,346,191.81
---------------------------	--------------

Total Purchased Property Services	\$3,454,173.81
--	-----------------------

500 Other Purchased Services

549 Other Advertising/Public Relations	6,460.88
--	----------

Total Other Purchased Services	\$6,460.88
---------------------------------------	-------------------

600 Supplies

610 General Supplies	69.50
----------------------	-------

Total Supplies	\$69.50
-----------------------	----------------

700 Property

762 Capitalized Equipment - Replacement	106,880.00
---	------------

766 Capitalized Technology Equipment – Replacement	17,097.00
--	-----------

Total Property	\$123,977.00
-----------------------	---------------------

Total 4000 Facilities Acquisition, Construction and Improvement Services	\$5,658,824.51
---	-----------------------

LEA : 123465303 Methacton SD

Printed 10/14/2020 2:00:52 PM

Other Capital Projects Fund (39)

4200 Existing Site Improvement Services	<u>Elementary</u>	<u>Secondary</u>	<u>Federal</u>	<u>Total</u>
400 <u>Purchased Property Services</u>				
430 Repairs and Maintenance Services				107,982.00
Total Purchased Property Services				\$107,982.00
700 <u>Property</u>				
766 Capitalized Technology Equipment – Replacement				17,097.00
Total Property				\$17,097.00
Total 4200 Existing Site Improvement Services				\$125,079.00

LEA : 123465303 Methacton SD

Printed 10/14/2020 2:00:52 PM

Other Capital Projects Fund (39)

4500 Building Acquisition and Construction Services – Original and Additional	<u>Elementary</u>	<u>Secondary</u>	<u>Federal</u>	<u>Total</u>
300 <u>Purchased Professional and Technical Services</u>				
330 Other Professional Services				768,616.13
Total Purchased Professional and Technical Services				\$768,616.13
Total 4500 Building Acquisition and Construction Services – Original and Additional				\$768,616.13

LEA : 123465303 Methacton SD

Printed 10/14/2020 2:00:52 PM

Other Capital Projects Fund (39)

4600 Existing Building Improvement Services	<u>Elementary</u>	<u>Secondary</u>	<u>Federal</u>	<u>Total</u>
300 <u>Purchased Professional and Technical Services</u>				
330 Other Professional Services				1,305,527.19
Total Purchased Professional and Technical Services				\$1,305,527.19
400 <u>Purchased Property Services</u>				
450 Construction Services				3,346,191.81
Total Purchased Property Services				\$3,346,191.81
500 <u>Other Purchased Services</u>				
549 Other Advertising/Public Relations				6,460.88
Total Other Purchased Services				\$6,460.88
600 <u>Supplies</u>				
610 General Supplies				69.50
Total Supplies				\$69.50
700 <u>Property</u>				
762 Capitalized Equipment - Replacement				106,880.00
Total Property				\$106,880.00
Total 4600 Existing Building Improvement Services				\$4,765,129.38

LEA : 123465303 Methacton SD

Printed 10/14/2020 2:00:58 PM

Other Capital Projects Fund (39)

5000 Other Expenditures and Financing Uses

Total

800 <u>Other Objects</u>	
830 Interest	314.83
Total Other Objects	\$314.83
900 <u>Other Uses of Funds</u>	
910 Redemption of Principal	7,950,454.69
990 Miscellaneous Other Uses of Funds	108,182.50
Total Other Uses of Funds	\$8,058,637.19
Total 5000 Other Expenditures and Financing Uses	\$8,058,952.02

LEA : 123465303 Methacton SD

Printed 10/14/2020 2:00:58 PM

Other Capital Projects Fund (39)

5100 Debt Service / Other Expenditures and Financing Uses	<u>Elementary</u>	<u>Secondary</u>	<u>Federal</u>	<u>Total</u>
800 <u>Other Objects</u>				
830 Interest				314.83
Total Other Objects				\$314.83
900 <u>Other Uses of Funds</u>				
910 Redemption of Principal				7,950,454.69
990 Miscellaneous Other Uses of Funds				108,182.50
Total Other Uses of Funds				\$8,058,637.19
Total 5100 Debt Service / Other Expenditures and Financing Uses				\$8,058,952.02

LEA : 123465303 Methacton SD

Printed 10/14/2020 2:00:58 PM

Other Capital Projects Fund (39)

5110 Debt Service	<u>Elementary</u>	<u>Secondary</u>	<u>Federal</u>	<u>Total</u>
800 <u>Other Objects</u>				
830 Interest				314.83
Total Other Objects				\$314.83
Total 5110 Debt Service				\$314.83

LEA : 123465303 Methacton SD

Printed 10/14/2020 2:00:58 PM

Other Capital Projects Fund (39)

5120 Debt Service – Refunded Bonds

<u>Elementary</u>	<u>Secondary</u>	<u>Federal</u>	<u>Total</u>
-------------------	------------------	----------------	--------------

900 Other Uses of Funds

910 Redemption of Principal			7,950,454.69
-----------------------------	--	--	--------------

Total Other Uses of Funds			\$7,950,454.69
Total 5120 Debt Service – Refunded Bonds			\$7,950,454.69

LEA : 123465303 Methacton SD

Printed 10/14/2020 2:00:58 PM

Other Capital Projects Fund (39)

5150 Bond Discounts

<u>Elementary</u>	<u>Secondary</u>	<u>Federal</u>	<u>Total</u>
-------------------	------------------	----------------	--------------

900 Other Uses of Funds

990 Miscellaneous Other Uses of Funds				108,182.50
---------------------------------------	--	--	--	------------

Total Other Uses of Funds				\$108,182.50
Total 5150 Bond Discounts				\$108,182.50

LEA : 123465303 Methacton SD

Printed 10/14/2020 2:01:16 PM

	General Fund(10)	Student Sponsored Activity Fund(21)	Public Purpose Trust(27)	Other Compt Approved (28)	Athletic / Activity(29)
1000 Instruction					
1100 Regular Programs - Elementary / Secondary	42,201,744.90				
1200 Special Programs - Elementary / Secondary	16,723,542.14				
1300 Vocational Education	2,526,669.40				
1400 Other Instructional Programs - Elementary / Secondary	223,778.50				
1500 Nonpublic School Programs	3,500.00				
1600 Adult Education Programs	86,807.74				
Total Instruction	\$61,766,042.68				
2000 Support Services					
2100 Support Services - Students	5,412,667.66				
2200 Support Services - Instructional Staff	3,311,362.44				
2300 Support Services - Administration	6,650,156.87				
2400 Support Services - Pupil Health	1,877,746.27				
2500 Support Services - Business	1,095,613.14				
2600 Operation and Maintenance of Plant Services	8,596,342.48				
2700 Student Transportation Services	6,003,125.34				
2800 Support Services - Central	1,760,106.82				
2900 Other Support Services	67,743.42				
Total Support Services	\$34,774,864.44				
3000 Operation of Non-Instructional Services					
3200 Student Activities	1,528,191.29				
3300 Community Services	940.70				
Total Operation of Non-Instructional Services	\$1,529,131.99				
4000 Facilities Acquisition, Construction and Improvement Services					
4200 Existing Site Improvement Services					
4500 Building Acquisition and Construction Services - Original and Additional					
4600 Existing Building Improvement Services					
Total Facilities Acquisition, Construction and Improvement Services					
5000 Other Expenditures and Financing Uses					
5100 Debt Service / Other Expenditures and Financing Uses	10,368,611.80				
Total Other Expenditures and Financing Uses	\$10,368,611.80				
TOTAL ACTUAL EXPENDITURES & OTHER FINANCING USES	\$108,438,650.91				

LEA : 123465303 Methacton SD

Printed 10/14/2020 2:01:16 PM

	<u>Capital Reserve (690.1850)(31)</u>	<u>Capital Reserve (1431)(32)</u>	<u>Other Capital Projects Fund(39)</u>	<u>Debt Service(40)</u>	<u>Permanent(90)</u>
1000 <u>Instruction</u>					
1100 Regular Programs - Elementary / Secondary					
1200 Special Programs - Elementary / Secondary					
1300 Vocational Education					
1400 Other Instructional Programs - Elementary / Secondary					
1500 Nonpublic School Programs					
1600 Adult Education Programs					
Total Instruction					
2000 <u>Support Services</u>					
2100 Support Services - Students					
2200 Support Services - Instructional Staff					
2300 Support Services - Administration			246,512.28		
2400 Support Services - Pupil Health					
2500 Support Services - Business					
2600 Operation and Maintenance of Plant Services			12,378.22		
2700 Student Transportation Services			4,261.00		
2800 Support Services - Central					
2900 Other Support Services					
Total Support Services			\$263,151.50		
3000 <u>Operation of Non-Instructional Services</u>					
3200 Student Activities					
3300 Community Services					
Total Operation of Non-Instructional Services					
4000 <u>Facilities Acquisition, Construction and Improvement Services</u>					
4200 Existing Site Improvement Services			125,079.00		
4500 Building Acquisition and Construction Services - Original and Additional			768,616.13		
4600 Existing Building Improvement Services			4,765,129.38		
Total Facilities Acquisition, Construction and Improvement Services			\$5,658,824.51		
5000 <u>Other Expenditures and Financing Uses</u>					
5100 Debt Service / Other Expenditures and Financing Uses			8,058,952.02		
Total Other Expenditures and Financing Uses			\$8,058,952.02		
TOTAL ACTUAL EXPENDITURES & OTHER FINANCING USES			\$13,980,928.03		

	<u>Total</u>
1000 <u>Instruction</u>	
1100 Regular Programs - Elementary / Secondary	42,201,744.90
1200 Special Programs - Elementary / Secondary	16,723,542.14
1300 Vocational Education	2,526,669.40
1400 Other Instructional Programs - Elementary / Secondary	223,778.50
1500 Nonpublic School Programs	3,500.00
1600 Adult Education Programs	86,807.74
Total Instruction	\$61,766,042.68
2000 <u>Support Services</u>	
2100 Support Services - Students	5,412,667.66
2200 Support Services - Instructional Staff	3,311,362.44
2300 Support Services - Administration	6,896,669.15
2400 Support Services - Pupil Health	1,877,746.27
2500 Support Services - Business	1,095,613.14
2600 Operation and Maintenance of Plant Services	8,608,720.70
2700 Student Transportation Services	6,007,386.34
2800 Support Services - Central	1,760,106.82
2900 Other Support Services	67,743.42
Total Support Services	\$35,038,015.94
3000 <u>Operation of Non-Instructional Services</u>	
3200 Student Activities	1,528,191.29
3300 Community Services	940.70
Total Operation of Non-Instructional Services	\$1,529,131.99
4000 <u>Facilities Acquisition, Construction and Improvement Services</u>	
4200 Existing Site Improvement Services	125,079.00
4500 Building Acquisition and Construction Services - Original and Additional	768,616.13
4600 Existing Building Improvement Services	4,765,129.38
Total Facilities Acquisition, Construction and Improvement Services	\$5,658,824.51
5000 <u>Other Expenditures and Financing Uses</u>	
5100 Debt Service / Other Expenditures and Financing Uses	18,427,563.82
Total Other Expenditures and Financing Uses	\$18,427,563.82
TOTAL ACTUAL EXPENDITURES & OTHER FINANCING USES	\$122,419,578.94

LEA : 123465303 Methacton SD

Printed 10/14/2020 2:01:24 PM

PSERS Salary Data (Salary Data should relate to the General Fund only)

Amount	Description	Amount
	Total Salary Base for salaries subject to PSERS withholding	43,423,658.52
	Total Federally Funded salaries subject to PSERS withholding	968,551.77

Title I Expenditure Data

Amount	Description	Amount
	Expenditures Funded with Current Title I Funds	240,791.09
	Expenditures Funded with Carry over Title I Funds	11,785.08
Total Title I Expenditure Data		\$252,576.17

Benefits for Staff Relative to Collective Bargaining Agreements

	OBJECT	COVERED	NOT COVERED	TOTAL
10 General Fund				
	211 Medical Insurance			
	212 Dental Insurance			
	215 Eye Care Insurance	30,023.54		30,023.54
	216 Prescription Insurance			
	271 Self-Insurance Medical Benefits	7,544,690.65		7,544,690.65
	272 Self-Insurance Dental Benefits	258,502.22		258,502.22
	275 Self-Insurance Eye Care Benefits			
	276 Self-Insurance Prescription Benefits	1,973,233.90		1,973,233.90
	FUND TOTAL	\$9,806,450.31		\$9,806,450.31
50 Enterprise Fund	No Self Insurance data to report			
	211 Medical Insurance			
	212 Dental Insurance			
	215 Eye Care Insurance			
	216 Prescription Insurance			
	271 Self-Insurance Medical Benefits			
	272 Self-Insurance Dental Benefits			
	275 Self-Insurance Eye Care Benefits			
	276 Self-Insurance Prescription Benefits			
	FUND TOTAL			
60 Internal Service Fund	No Self Insurance data to report			
	211 Medical Insurance			
	212 Dental Insurance			
	215 Eye Care Insurance			
	216 Prescription Insurance			
	271 Self-Insurance Medical Benefits			
	272 Self-Insurance Dental Benefits			
	275 Self-Insurance Eye Care Benefits			
	276 Self-Insurance Prescription Benefits			
	FUND TOTAL			
Total of All Funds		\$9,806,450.31		\$9,806,450.31

LEA : 123465303 Methacton SD

Printed 10/14/2020 2:01:29 PM

Function	Special Education (Prior Year)	Nonspecial Education (Prior Year)	Total (Prior Year)	Special Education (Current Year)	Nonspecial Education (Current Year)	Total (Current Year)
2120 Guidance Services	217,112.33	1,954,010.95	2,171,123.28	265,773.29	2,391,959.59	2,657,732.88
2140 Psychological Services	493,141.86	123,285.46	616,427.32	671,812.66	167,953.16	839,765.82
2150 Speech Pathology and Audiology Services						
2160 Social Work Services	20,120.00	382,280.00	402,400.00	23,257.00	441,883.00	465,140.00
2260 Instruction and Curriculum Development Services	28,021.45	532,407.57	560,429.02	51,915.96	986,403.19	1,038,319.15
2350 Legal and Accounting Services	100,724.09	258,993.96	359,718.05	136,227.95	450,824.64	587,052.59
2420 Medical Services	348,041.76	38,671.31	386,713.07	523,651.60	58,183.51	581,835.11
2440 Nursing Services	130,749.81	1,176,748.30	1,307,498.11	129,577.07	1,166,193.59	1,295,770.66
2700 Student Transportation Services	747,101.55	6,723,913.91	7,471,015.46	600,312.53	5,402,812.81	6,003,125.34
Total	\$2,085,012.85	\$11,190,311.46	\$13,275,324.31	\$2,402,528.06	\$11,066,213.49	\$13,468,741.55

LEA : 123465303 Methacton SD

Printed 10/14/2020 2:01:33 PM

(PRINCIPAL AMOUNTS ONLY)

GOVERNMENTAL FUNDS/ ACTIVITIES

	Short-Term Borrowing	General Obligation Bonds/Notes	Authority Building Obligations	Other Long-Term Debt	Other Post- Employment Benefits (OPEB)	Compensated Absences	Net Pension Liability	Total
1. Debt at Beginning of Fiscal Year		66,060,000.00		1,863,785.00	3,755,560.00	2,729,518.00	151,024,000.00	225,432,863.00
2. Additional Debt Incurred During Year		15,990,000.00			12,184.00	256,751.00		16,258,935.00
3. Retirements and Repayments		15,590,000.00		160,023.00			3,472,000.00	19,222,023.00
4. Debt at End of Fiscal Year		66,460,000.00		1,703,762.00	3,767,744.00	2,986,269.00	147,552,000.00	222,469,775.00
5. Accreted Interest at End Of Fiscal Year								
6. Total Debt and Accreted Interest		66,460,000.00		1,703,762.00	3,767,744.00	2,986,269.00	147,552,000.00	222,469,775.00
7. Current Portion P&I - Due within 1 year		10,214,323.13		163,006.00		149,313.45		10,526,642.58
8. Interest Paid during current fiscal year		2,363,942.00		46,345.00				2,410,287.00

(PRINCIPAL AMOUNTS ONLY)

PROPRIETARY FUNDS

- 1. Debt at Beginning of Fiscal Year
- 2. Additional Debt Incurred During Year
- 3. Retirements and Repayments
- 4. Debt at End of Fiscal Year
- 5. Accreted Interest at End Of Fiscal Year
- 6. Total Debt and Accreted Interest
- 7. Current Portion P&I - Due within 1 year
- 8. Interest Paid during current fiscal year

LEA : 123465303 Methacton SD

Printed 10/14/2020 2:01:33 PM

Total Principal and Interest Payments Made by Your School - All Funds

Function	Fund		Principal (910)	Principal (920)	Interest (830)	Total (Principal +Interest)	Misc Other Uses (990)
5110	10	General Fund	7,850,023.10		2,409,970.30	10,259,993.40	
5110	20	Special Revenue Funds					
5110	30	Capital Projects Funds			314.83	314.83	
5110	40	Debt Service Fund					
5110	90	Permanent Fund					
5120	10	General Fund					
5120	20	Special Revenue Funds					
5120	30	Capital Projects Funds	7,950,454.69			7,950,454.69	
5120	40	Debt Service Fund					
Total Debt Payments - Governmental Funds			\$15,800,477.79		\$2,410,285.13	\$18,210,762.92	
Function	Fund		Principal (910)	Principal (920)	Interest (830)	Total (Principal +Interest)	
5110	50	Enterprise Fund					
5110	60	Internal Service Fund					
5120	50	Enterprise Fund					
5120	60	Internal Service Fund					
Total Debt Payments - Proprietary Funds							

LEA : 123465303 Methacton SD

Printed 10/14/2020 2:01:33 PM

Debt Details
Governmental Funds/ Activities

Debt Category	Debt Issue Date (MM/YYYY)	Principal Amounts Only				Current Portion Due Within One Year (Principal and Interest)	Interest Paid During Fiscal Year
		Debt at Beginning of Fiscal Year	Additions	Reductions / Repayments	Debt at End of Fiscal Year		
General Obligation Bonds/Notes – CIB	11/2019		4,020,000.00		4,020,000.00	147,079.38	39,476.00
General Obligation Bonds/Notes – CIB	12/2019		7,495,000.00	60,000.00	7,435,000.00	636,050.00	22,361.00
General Obligation Bonds/Notes – CIB	07/2019		4,475,000.00		4,475,000.00	175,301.25	112,139.00
General Obligation Bonds/Notes – CIB	06/2018	5,910,000.00		5,000.00	5,905,000.00	234,923.75	230,023.00
General Obligation Bonds/Notes – CIB	06/2018	5,400,000.00			5,400,000.00	179,735.00	179,735.00
General Obligation Bonds/Notes – CIB	12/2017	5,220,000.00		975,000.00	4,245,000.00	1,128,825.00	148,775.00
General Obligation Bonds/Notes – CIB	12/2017	8,460,000.00		15,000.00	8,445,000.00	254,908.75	240,164.00
General Obligation Bonds/Notes – CIB	03/2016	27,845,000.00		5,470,000.00	22,375,000.00	6,384,000.00	1,152,800.00
General Obligation Bonds/Notes – CIB	05/2015	1,270,000.00		745,000.00	525,000.00	535,500.00	35,900.00
General Obligation Bonds/Notes – CIB	05/2015	1,305,000.00		175,000.00	1,130,000.00	457,450.00	38,013.00
General Obligation Bonds/Notes – CIB	06/2013	4,200,000.00		4,200,000.00			49,503.00
General Obligation Bonds/Notes – CIB	06/2013	2,510,000.00		5,000.00	2,505,000.00	80,550.00	75,653.00
General Obligation Bonds/Notes – CIB	12/2012	3,940,000.00		3,940,000.00			39,400.00
Other Long Term Debt/Liabilities		1,863,785.00		160,023.00	1,703,762.00	163,006.00	46,345.00
Compensated Absences		2,729,518.00	256,751.00		2,986,269.00	149,313.45	
Other Post-Employment Benefits (OPEB)		3,755,560.00	12,184.00		3,767,744.00		
Net Pension Liability		151,024,000.00		3,472,000.00	147,552,000.00		
Totals for Debt Entered:		\$225,432,863.00	\$16,258,935.00	\$19,222,023.00	\$222,469,775.00	\$10,526,642.58	\$2,410,287.00

LEA : 123465303 Methacton SD

Printed 10/14/2020 2:01:36 PM

General Fund (10)

Section 1: Tuition/Purchased Services as Reported within Expenditure Detail	Amount
Tuition Reported in General Fund Expenditures 1000-560	3,701,514.07
Purchased Services in General Fund Expenditures 1000-594 and 1000-597	
Section 1 Total	\$3,701,514.07

Section 2: Tuition Paid to Institution Types During Fiscal Year	Tuition Paid For Nonspecial Education	Tuition Paid For Special Education	Total
1 1306 Institutions			
2 Institutionalized Children's Programs			
3 Juveniles Incarcerated in Adult Facilities			
4 Residential Treatment Facilities			
5 Other Local Education Agencies	956.02	16,867.05	17,823.07
6 Brick and Mortar Charter Schools	411,992.10	137,623.85	549,615.95
7 Cyber Charter Schools	544,421.49	173,580.80	718,002.29
8 Career and Technology Centers	1,358,279.56		1,358,279.56
9 Approved Private Schools		532,683.86	532,683.86
10 PA Chartered Schools for the Deaf and Blind			
11 Private Residential Rehabilitative Institutions	5,946.33	263,902.59	269,848.92
12 Juvenile Detention Centers	4,558.00		4,558.00
13 Special Program Jointures			
14 Other Tuition Not Included Elsewhere In This Section		250,702.42	250,702.42
Section 2 Total	\$2,326,153.50	\$1,375,360.57	\$3,701,514.07

LEA : 123465303 Methacton SD

Printed 10/14/2020 2:01:39 PM

Food Service / Cafeteria Operations Fund (51)

3000 Operation of Non-Instructional Services

Total

500	<u>Other Purchased Services</u>	
570	Food Service Management	1,057,069.18
Total Other Purchased Services		\$1,057,069.18
600	<u>Supplies</u>	
610	General Supplies	1,398.77
630	Food	54,216.65
Total Supplies		\$55,615.42
700	<u>Property</u>	
740	Depreciation	11,424.65
Total Property		\$11,424.65
Total 3000 Operation of Non-Instructional Services		\$1,124,109.25

LEA : 123465303 Methacton SD

Printed 10/14/2020 2:01:39 PM

Food Service / Cafeteria Operations Fund (51)

3100 Food Services	<u>Elementary</u>	<u>Secondary</u>	<u>Federal</u>	<u>Total</u>
500 <u>Other Purchased Services</u>				
570 Food Service Management				1,057,069.18
Total Other Purchased Services				\$1,057,069.18
600 <u>Supplies</u>				
610 General Supplies				1,398.77
630 Food				54,216.65
Total Supplies				\$55,615.42
700 <u>Property</u>				
740 Depreciation				11,424.65
Total Property				\$11,424.65
Total 3100 Food Services				\$1,124,109.25

	<u>Food Service(51)</u>	<u>Child Care Operations(52)</u>	<u>Other Enterprise(58)</u>	<u>Internal Service(60)</u>	<u>Total</u>
3000 <u>Operation of Non-Instructional Services</u>					
3100 Food Services	1,124,109.25				1,124,109.25
Total Operation of Non-Instructional Services	\$1,124,109.25				\$1,124,109.25
TOTAL ACTUAL EXPENDITURES & OTHER FINANCING USES	\$1,124,109.25				\$1,124,109.25

LEA : 123465303 Methacton SD

Printed 10/14/2020 2:01:55 PM

Fund	School	School Number	Local Personnel	Local Nonpersonnel	State Personnel	State Nonpersonnel	Federal Personnel	Federal Nonpersonnel	Total	Explanation
10										
	Arcola Intrmd Sch	6716	9,168,251.64	2,305,466.31	2,567,364.62	645,594.48	193,750.90	37,726.55	14,918,154.50	
	Arrowhead El Sch	6845	5,548,419.24	1,187,353.82	1,553,711.20	332,491.98	8,292.82	20,929.57	8,651,198.63	
	Eagleville El Sch	3303	4,726,889.93	1,134,264.80	1,323,660.22	317,625.59	165,768.66	19,417.25	7,687,626.45	
	Methacton HS	3305	18,123,261.52	4,436,205.61	5,075,015.62	1,242,260.55	222,093.21	71,437.44	29,170,273.95	
	Skyview Upper El Sch	8139	8,860,633.62	1,985,250.82	2,481,223.04	555,925.26	395,449.42	37,508.27	14,315,990.43	
	Woodland El Sch	5252	5,831,901.69	1,293,563.72	1,633,094.14	362,233.70	149,362.62	22,100.97	9,292,256.84	
	Worcester El Sch	7573	4,981,633.34	1,194,060.20	1,394,995.43	334,369.96	8,268.60	20,868.44	7,934,195.97	
Total			57,240,990.98	13,536,165.28	16,029,064.27	3,790,501.52	1,142,986.23	229,988.49	91,969,696.77	

	<u>Nonspecial Education</u>	<u>Special Education</u>
1000 <u>Instruction</u>		
1400 Other Instructional Programs - Elementary / Secondary	67,038.00	226,006.00
Total Instruction	\$67,038.00	\$226,006.00
2000 <u>Support Services</u>		
2100 Support Services - Students	6,119.00	20,629.00
2500 Support Services - Business	57.00	190.00
2800 Support Services - Central	118.00	398.00
Total Support Services	\$6,294.00	\$21,217.00
5000 <u>Other Expenditures and Financing Uses</u>		
5200 Interfund Transfers - Out	2,200.00	7,417.00
Total Other Expenditures and Financing Uses	\$2,200.00	\$7,417.00
TOTAL ACTUAL EXPENDITURES & OTHER FINANCING USES	\$75,532.00	\$254,640.00

LEA : 123465303 Methacton SD

Printed 10/14/2020 2:02:12 PM

1000 Instruction

100 <u>Personnel Services - Salaries</u>		
100 Personnel Services - Salaries	43,209.00	145,670.00
Total Personnel Services - Salaries	\$43,209.00	\$145,670.00
200 <u>Personnel Services - Employee Benefits</u>		
210 Group Insurance - Contracted Provider	4,837.00	16,308.00
220 Social Security Contributions	3,244.00	10,937.00
230 PSERS Retirement Contributions	14,816.00	49,950.00
250 Unemployment Compensation	130.00	440.00
260 Workers' Compensation	432.00	1,457.00
292 Health Savings Accounts	268.00	902.00
Total Personnel Services - Employee Benefits	\$23,727.00	\$79,994.00
500 <u>Other Purchased Services</u>		
530 Communications	18.00	60.00
Total Other Purchased Services	\$18.00	\$60.00
600 <u>Supplies</u>		
610 General Supplies	74.00	248.00
620 Energy	10.00	34.00
Total Supplies	\$84.00	\$282.00
Total 1000 Instruction	\$67,038.00	\$226,006.00

LEA : 123465303 Methacton SD

Printed 10/14/2020 2:02:12 PM

1400 Other Instructional Programs - Elementary / Secondary	<u>Nonspecial Education</u>	<u>Special Education</u>
100 Personnel Services - Salaries		
100 Personnel Services - Salaries	43,209.00	145,670.00
Total Personnel Services - Salaries	\$43,209.00	\$145,670.00
200 Personnel Services - Employee Benefits		
210 Group Insurance - Contracted Provider	4,837.00	16,308.00
220 Social Security Contributions	3,244.00	10,937.00
230 PSERS Retirement Contributions	14,816.00	49,950.00
250 Unemployment Compensation	130.00	440.00
260 Workers' Compensation	432.00	1,457.00
292 Health Savings Accounts	268.00	902.00
Total Personnel Services - Employee Benefits	\$23,727.00	\$79,994.00
500 Other Purchased Services		
530 Communications	18.00	60.00
Total Other Purchased Services	\$18.00	\$60.00
600 Supplies		
610 General Supplies	74.00	248.00
620 Energy	10.00	34.00
Total Supplies	\$84.00	\$282.00
Total 1400 Other Instructional Programs - Elementary / Secondary	\$67,038.00	\$226,006.00

LEA : 123465303 Methacton SD

Printed 10/14/2020 2:02:12 PM

1440 Alternative Regular Education Programs	<u>Nonspecial Education</u>	<u>Special Education</u>
100 <u>Personnel Services - Salaries</u>		
100 Personnel Services - Salaries	43,209.00	145,670.00
Total Personnel Services - Salaries	\$43,209.00	\$145,670.00
200 <u>Personnel Services - Employee Benefits</u>		
210 Group Insurance - Contracted Provider	4,837.00	16,308.00
220 Social Security Contributions	3,244.00	10,937.00
230 PSERS Retirement Contributions	14,816.00	49,950.00
250 Unemployment Compensation	130.00	440.00
260 Workers' Compensation	432.00	1,457.00
292 Health Savings Accounts	268.00	902.00
Total Personnel Services - Employee Benefits	\$23,727.00	\$79,994.00
500 <u>Other Purchased Services</u>		
530 Communications	18.00	60.00
Total Other Purchased Services	\$18.00	\$60.00
600 <u>Supplies</u>		
610 General Supplies	74.00	248.00
620 Energy	10.00	34.00
Total Supplies	\$84.00	\$282.00
Total 1440 Alternative Regular Education Programs	\$67,038.00	\$226,006.00

LEA : 123465303 Methacton SD

Printed 10/14/2020 2:02:12 PM

1441 Adjudicated / Court-Placed Programs	<u>Nonspecial Education</u>	<u>Special Education</u>
100 Personnel Services - Salaries		
100 Personnel Services - Salaries	43,209.00	145,670.00
Total Personnel Services - Salaries	\$43,209.00	\$145,670.00
200 Personnel Services - Employee Benefits		
210 Group Insurance - Contracted Provider	4,837.00	16,308.00
220 Social Security Contributions	3,244.00	10,937.00
230 PSERS Retirement Contributions	14,816.00	49,950.00
250 Unemployment Compensation	130.00	440.00
260 Workers' Compensation	432.00	1,457.00
292 Health Savings Accounts	268.00	902.00
Total Personnel Services - Employee Benefits	\$23,727.00	\$79,994.00
500 Other Purchased Services		
530 Communications	18.00	60.00
Total Other Purchased Services	\$18.00	\$60.00
600 Supplies		
610 General Supplies	74.00	248.00
620 Energy	10.00	34.00
Total Supplies	\$84.00	\$282.00
Total 1441 Adjudicated / Court-Placed Programs	\$67,038.00	\$226,006.00

LEA : 123465303 Methacton SD

Printed 10/14/2020 2:02:12 PM

2000 Support Services

100 <u>Personnel Services - Salaries</u>		
100 Personnel Services - Salaries	3,810.00	12,842.00
Total Personnel Services - Salaries	\$3,810.00	\$12,842.00
200 <u>Personnel Services - Employee Benefits</u>		
210 Group Insurance - Contracted Provider	593.00	1,998.00
220 Social Security Contributions	286.00	963.00
230 PSERS Retirement Contributions	1,306.00	4,403.00
240 Tuition Reimbursement	114.00	386.00
250 Unemployment Compensation	10.00	35.00
260 Workers' Compensation	38.00	129.00
292 Health Savings Accounts	22.00	75.00
Total Personnel Services - Employee Benefits	\$2,369.00	\$7,989.00
300 <u>Purchased Professional and Technical Services</u>		
360 Employee Training and Development Services	4.00	12.00
Total Purchased Professional and Technical Services	\$4.00	\$12.00
500 <u>Other Purchased Services</u>		
550 Printing and Binding	57.00	190.00
580 Travel	54.00	184.00
Total Other Purchased Services	\$111.00	\$374.00
Total 2000 Support Services	\$6,294.00	\$21,217.00

LEA : 123465303 Methacton SD

Printed 10/14/2020 2:02:12 PM

2100 Support Services - Students	<u>Nonspecial Education</u>	<u>Special Education</u>
100 <u>Personnel Services - Salaries</u>		
100 Personnel Services - Salaries	3,810.00	12,842.00
Total Personnel Services - Salaries	\$3,810.00	\$12,842.00
200 <u>Personnel Services - Employee Benefits</u>		
210 Group Insurance - Contracted Provider	593.00	1,998.00
220 Social Security Contributions	286.00	963.00
230 PSERS Retirement Contributions	1,306.00	4,403.00
250 Unemployment Compensation	10.00	35.00
260 Workers' Compensation	38.00	129.00
292 Health Savings Accounts	22.00	75.00
Total Personnel Services - Employee Benefits	\$2,255.00	\$7,603.00
500 <u>Other Purchased Services</u>		
580 Travel	54.00	184.00
Total Other Purchased Services	\$54.00	\$184.00
Total 2100 Support Services - Students	\$6,119.00	\$20,629.00

LEA : 123465303 Methacton SD

Printed 10/14/2020 2:02:12 PM

2110 Supervision of Student Services	<u>Nonspecial Education</u>	<u>Special Education</u>
100 <u>Personnel Services - Salaries</u>		
100 Personnel Services - Salaries	3,109.00	10,480.00
Total Personnel Services - Salaries	\$3,109.00	\$10,480.00
200 <u>Personnel Services - Employee Benefits</u>		
210 Group Insurance - Contracted Provider	507.00	1,709.00
220 Social Security Contributions	233.00	785.00
230 PSERS Retirement Contributions	1,066.00	3,593.00
250 Unemployment Compensation	7.00	23.00
260 Workers' Compensation	31.00	105.00
292 Health Savings Accounts	15.00	50.00
Total Personnel Services - Employee Benefits	\$1,859.00	\$6,265.00
500 <u>Other Purchased Services</u>		
580 Travel	47.00	159.00
Total Other Purchased Services	\$47.00	\$159.00
Total 2110 Supervision of Student Services	\$5,015.00	\$16,904.00

LEA : 123465303 Methacton SD

Printed 10/14/2020 2:02:12 PM

2119 Supervision of Student Services - All Other Supervision	<u>Nonspecial Education</u>	<u>Special Education</u>
100 <u>Personnel Services - Salaries</u>		
100 Personnel Services - Salaries	3,109.00	10,480.00
Total Personnel Services - Salaries	\$3,109.00	\$10,480.00
200 <u>Personnel Services - Employee Benefits</u>		
210 Group Insurance - Contracted Provider	507.00	1,709.00
220 Social Security Contributions	233.00	785.00
230 PSERS Retirement Contributions	1,066.00	3,593.00
250 Unemployment Compensation	7.00	23.00
260 Workers' Compensation	31.00	105.00
292 Health Savings Accounts	15.00	50.00
Total Personnel Services - Employee Benefits	\$1,859.00	\$6,265.00
500 <u>Other Purchased Services</u>		
580 Travel	47.00	159.00
Total Other Purchased Services	\$47.00	\$159.00
Total 2119 Supervision of Student Services - All Other Supervision	\$5,015.00	\$16,904.00

LEA : 123465303 Methacton SD

Printed 10/14/2020 2:02:12 PM

2170 Student Accounting Services	<u>Nonspecial Education</u>	<u>Special Education</u>
100 <u>Personnel Services - Salaries</u>		
100 Personnel Services - Salaries	701.00	2,362.00
Total Personnel Services - Salaries	\$701.00	\$2,362.00
200 <u>Personnel Services - Employee Benefits</u>		
210 Group Insurance - Contracted Provider	86.00	289.00
220 Social Security Contributions	53.00	178.00
230 PSERS Retirement Contributions	240.00	810.00
250 Unemployment Compensation	3.00	12.00
260 Workers' Compensation	7.00	24.00
292 Health Savings Accounts	7.00	25.00
Total Personnel Services - Employee Benefits	\$396.00	\$1,338.00
500 <u>Other Purchased Services</u>		
580 Travel	7.00	25.00
Total Other Purchased Services	\$7.00	\$25.00
Total 2170 Student Accounting Services	\$1,104.00	\$3,725.00

LEA : 123465303 Methacton SD

Printed 10/14/2020 2:02:12 PM

2500 Support Services - Business	<u>Nonspecial Education</u>	<u>Special Education</u>
500 <u>Other Purchased Services</u>		
550 Printing and Binding	57.00	190.00
Total Other Purchased Services	\$57.00	\$190.00
Total 2500 Support Services - Business	\$57.00	\$190.00

LEA : 123465303 Methacton SD

Printed 10/14/2020 2:02:12 PM

2540 Printing, Publishing and Duplicating Services

Nonspecial Education

Special Education

500 Other Purchased Services

550 Printing and Binding	57.00	190.00
Total Other Purchased Services	\$57.00	\$190.00
Total 2540 Printing, Publishing and Duplicating Services	\$57.00	\$190.00

LEA : 123465303 Methacton SD

Printed 10/14/2020 2:02:12 PM

2800 Support Services - Central

	<u>Nonspecial Education</u>	<u>Special Education</u>
200 <u>Personnel Services - Employee Benefits</u>		
240 Tuition Reimbursement	114.00	386.00
Total Personnel Services - Employee Benefits	\$114.00	\$386.00
300 <u>Purchased Professional and Technical Services</u>		
360 Employee Training and Development Services	4.00	12.00
Total Purchased Professional and Technical Services	\$4.00	\$12.00
Total 2800 Support Services - Central	\$118.00	\$398.00

LEA : 123465303 Methacton SD

Printed 10/14/2020 2:02:12 PM

2830 Staff Services	<u>Nonspecial Education</u>	<u>Special Education</u>
200 <u>Personnel Services - Employee Benefits</u>		
240 Tuition Reimbursement	114.00	386.00
Total Personnel Services - Employee Benefits	\$114.00	\$386.00
300 <u>Purchased Professional and Technical Services</u>		
360 Employee Training and Development Services	4.00	12.00
Total Purchased Professional and Technical Services	\$4.00	\$12.00
Total 2830 Staff Services	\$118.00	\$398.00

LEA : 123465303 Methacton SD

Printed 10/14/2020 2:02:12 PM

2834 Staff Development Services - Non-Instructional, Certified Staff Only

Nonspecial Education

Special Education

200 Personnel Services - Employee Benefits

240 Tuition Reimbursement	114.00	386.00
Total Personnel Services - Employee Benefits	\$114.00	\$386.00
Total 2834 Staff Development Services - Non-Instructional, Certified Staff Only	\$114.00	\$386.00

LEA : 123465303 Methacton SD

Printed 10/14/2020 2:02:12 PM

2836 Staff Development Services - Non-Instructional, Non-Certified Staff Only	<u>Nonspecial Education</u>	<u>Special Education</u>
300 <u>Purchased Professional and Technical Services</u>		
360 Employee Training and Development Services	4.00	12.00
Total Purchased Professional and Technical Services	\$4.00	\$12.00
Total 2836 Staff Development Services - Non-Instructional, Non-Certified Staff Only	\$4.00	\$12.00

LEA : 123465303 Methacton SD

Printed 10/14/2020 2:02:12 PM

5000 Other Expenditures and Financing Uses

900 <u>Other Uses of Funds</u>		
939 Other Fund Transfers	2,200.00	7,417.00
Total Other Uses of Funds	\$2,200.00	\$7,417.00
Total 5000 Other Expenditures and Financing Uses	\$2,200.00	\$7,417.00

LEA : 123465303 Methacton SD

Printed 10/14/2020 2:02:12 PM

5200 Interfund Transfers - Out	<u>Nonspecial Education</u>	<u>Special Education</u>
900 <u>Other Uses of Funds</u>		
939 Other Fund Transfers	2,200.00	7,417.00
Total Other Uses of Funds	\$2,200.00	\$7,417.00
Total 5200 Interfund Transfers - Out	\$2,200.00	\$7,417.00

LEA : 123465303 Methacton SD

Printed 10/14/2020 2:02:12 PM

5210 General Fund Transfers	<u>Nonspecial Education</u>	<u>Special Education</u>
900 <u>Other Uses of Funds</u>		
939 Other Fund Transfers	2,200.00	7,417.00
Total Other Uses of Funds	\$2,200.00	\$7,417.00
Total 5210 General Fund Transfers	\$2,200.00	\$7,417.00

	<u>Nonspecial Education</u>	<u>Special Education</u>
7000 Revenue from State Sources		
Total Revenue from State Sources	\$9,826	\$33,127
Total	\$9,826	\$33,127
TOTAL REVENUES	\$9,826	\$33,127

LEA : 123465303 Methacton SD

Printed 10/14/2020 2:02:19 PM

	<u>Nonspecial Education</u>	<u>Special Education</u>
7000 Revenue from State Sources		
7810 State Share of Social Security and Medicare Taxes	1,765	5,950
7820 State Share of Retirement Contributions	8,061	27,177
Total Revenue from State Sources	\$9,826	\$33,127
TOTAL	\$9,826	\$33,127
TOTAL REVENUES	\$9,826	\$33,127